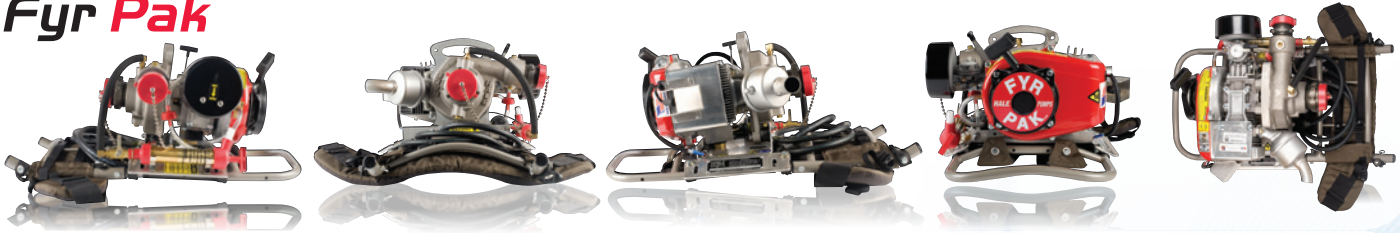


Fyr Flote



Fyr Pak



Super Chief



Performance Data	20FP-C8 Fyr Flote	20FV-C8 Fyr Flote	20FP-C8P Fyr Pak	Super Chief
Rated Output	45 gpm @ 100 psi	80 gpm @ 75 psi	45 gpm @ 125 psi	120 gpm @ 30 psi
Maximum Flow	70 gpm	135 gpm	75 gpm	425 gpm
Maximum Discharge Pressure	185 psi	130 psi	220 psi	50 psi
Maximum Pump Speed	8000 rpm	8000 rpm	8000 rpm	3600 rpm
Dimensions LxWxH	20¼ x 20 x 16	20¼ x 20 x 16	32 x 16½ x 13	30 x 30 x 23
Cooling	Air Cooled	Air Cooled	Air Cooled	Air Cooled
Fuel Tank Capacity	Mounted 1.4 gal	Mounted 1.4 gal	Remote 5 gal	Mounted 0.75 gal
Fuel Type	Gasoline	Gasoline	Gasoline	Gasoline
Weight – Dry	49 lbs	49 lbs	34 lbs	118 lbs
Weight – Wet	60 lbs	60 lbs	N/A	127 lbs
Engine	US820 2-Stroke	US820 2-Stroke	US820 2-Stroke	B&S PowerBuilt 4-Stroke
Engine Capability	8 HP	8 HP	8 HP	10.5 HP
Capacity	134 cc	134 cc	134 cc	344 cc

Authorized dealer:

© Hale 2016. All rights reserved. This publication is issued to provide outline information only which, unless agreed in writing by Hale, a division of IDEX Fire Suppression Group, may not be regarded as a representation relating to the products or services concerned. Hale reserves the right to alter without notice the specification, design, price or conditions of supply of any product or service



Wildland Fire,  
Special Purpose Portable Pumps





# The power of portability

When you are busy protecting your community from wildland fire you don't have time for second best. Which is why Hale's Wildland Fire specialty pumps are designed to deliver a big performance when you need it most.

From our innovative Fyr Pak back-pack pump to the versatile Super Chief and compact Fyr Flote you can expect great performance and exceptional durability. With over 100 years of pumping knowledge and experience we are a brand you can trust just like your communities trust you. Hale wildland fire pumps – performance and quality starts here.

## Fyr Pak

The Fyr Pak pump is a powerful yet compact pump that lets you fight fire, wherever it needs to be fought.

With its innovative back-pack configuration and a weight of only 34 lbs, the Fyr Pak puts you in control.

Driven by a 2-Cycle 8 HP engine with an outstanding power-to-weight ratio it gives you the versatility to fight fires where trucks cannot reach.



### Robust, reliable design where you need it most

With a spark-arresting muffler and integrated hand-primer as standard, Fyr Pak has all the functionality you need.

Used with Hale's robust floating pumps it becomes a complete fire-fighting solution that allows you to maximize the use of available water, wherever you are.



## Super Chief

Using a compact Briggs & Stratton 10.5 HP engine, it can deliver an impressive 425 GPM of flow giving you enough power for superior water transfer or two low pressure hand lines.

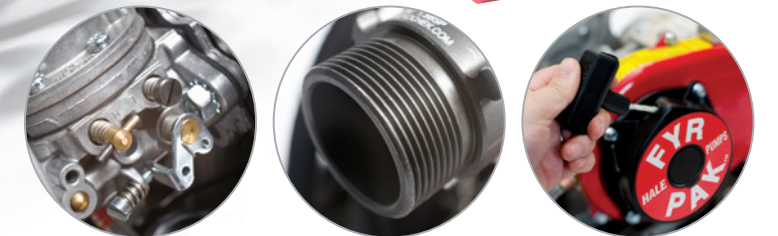
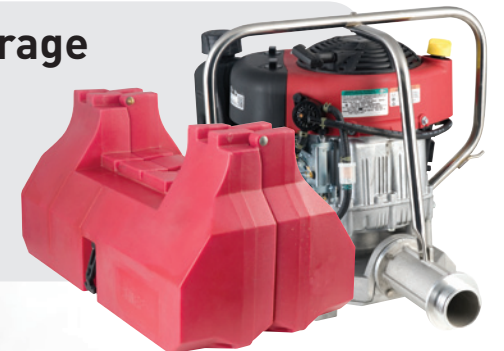
It will operate in as low as 3" depth of water allowing you to make the most of any standing water.

Hale Wildland Fire pumps – for performance and quality, no one else comes close.



### Ease of storage

The Super Chief floating pump dismantles in seconds making it easy to transport and stow.



## Fyr Flote

Wildland water sources can be difficult to find so when you do, you need to make the most of them.

The Fyr Flote is designed to give you that flexibility. Compact and easy to transport, it will pump water from as little as 4" depth allowing you to keep fighting fires for longer.

With a choice of high-pressure for direct fire-fighting or low-pressure for water transfer, you don't need to compromise.

