



Hale Fire Pump Company  
700 Spring Mill Avenue  
Conshohocken, PA 19428  
TEL 215-825-6300  
TWX 510-660-8931  
FAX 215-825-6440

March 29, 1993

TO: Midship, Light Truck and PSC's

FROM: Fred W. Buchler

SUBJECT: MODEL VPS POWER SHIFT DESIGN MODIFICATION


Recognizing that the strength of our product design often comes from the people who use our products, we have been requested to make a relatively minor design change in our Model VPS Pump Shift Mechanism. This change has now been made for the benefit of field service personnel around the country, for their convenience in providing routine maintenance procedures on the shift device.

Hale Cross Sectional Plate # 533C is enclosed for your convenience and to relate to the area of change. Note the shifting shaft Part No. 037-1341-00-0, is shorter, and equipped with a rod end to allow easier access and replacement of the shift cylinder sealing rings. The new design will permit the removal of the necessary shift cylinder parts for this repair without the removal of the vehicle drive line and flange assembly from the pump gearbox.

However, be advised that this relatively minor change could have some small impact on your manufacturing if you have a fixed design for a pump shift override mechanism. Our previous design provided a 1/2" diameter cross hole in the shift shaft for manual override purposes. Our new design will shorten the shift shaft and replace the through hole with a tapped hole in the end of the shaft, fitted with a rod end (eye bolt). The rod end will serve the purpose of attaching a manual override if required or provide a method for shift override if necessary by inserting a drift pin or screw driver in the rod end.

Implementation of this change is anticipated April 1, 1993.

As always, should you have any questions, do not hesitate to call.

  
Fred W. Buchler  
Vice President-Marketing

fwbl5/VPS-1

PARTS LIST HALE TYPE VPS POWER SHIFT  
PLATE NO. 533C

PART NO.	QTY.	DESCRIPTION
007-0080-01-0	1	Cylinder-Shifting
018-1410-02-0	2	Screw-5/16-18 x 1 Lg. Hex Hd. Stl. Zinc Pl. Cap
018-1412-63-0	2	Screw-5/16-18 x 1-1/4 Lg. Soc. Hd Stl Flt Pt Zinc Pl Set
018-1810-23-0	2	Screw-7/16-14 x 1 Lg. Counter-Bore 360° Nylon Locking Stl. Zinc Pl. Cap
037-0120-00-0	1	Shaft-Gearshift (QLF,QSF,M,4D & 6D Pumps) (037-0120-00-0 power shaft replaces 037-0070-00-0 manual shifting shaft
037-0450-00-0	1	Shaft-Gearshift (Q,QSMF & QF Pumps)(037-0450-00 power shaft replaces the 037-0130-00-0 manual shifting shaft. Check shaft part number to determine if new shaft is required)
037-1341-00-0	1	Shaft-Gearshift (QSMG,QG,QLG,QSG,MG,& 4DG Pumps) (037-1341-00-0 power shaft is standard on these pumps)
040-0410-00-0	1	Ring-Cylinder Cover Seal
040-1139-03-0	1	Ring-Piston Inner Seal
040-2109-00-0	2	Ring-Gearshift Shaft Seal
040-3349-00-0	1	Ring-Piston Outer Seal
044-0210-01-0	1	Cover-Cylinder
046-5060-00-0	1	Gasket-Shifting Cylinder
073-0020-01-0	1	Piston-Cylinder
077-0750-05-0	2	Ring-Piston Retaining
097-1430-00-0	1	Washer (QLF,QSF,M,4D,6D,Q,QSMF & QF Pumps)
110-1400-02-0	2	Nut-5/16-18 Zinc Pl STL Hex
296-0020-00-0	1	Scraper-Gearshift Shaft

ASSEMBLY PART NUMBER	VPS POWER SHIFT UNITS FOR THE FOLLOWING MODEL PUMPS
507-0110-00-0	QLF, QSF, M, 4D & 6D
507-0110-01-0	Q, QSMF & QF
507-0110-03-0	QHD, QSMFHD, QFHD, QSMG, QG, QLG, QSG, MG & 4DG

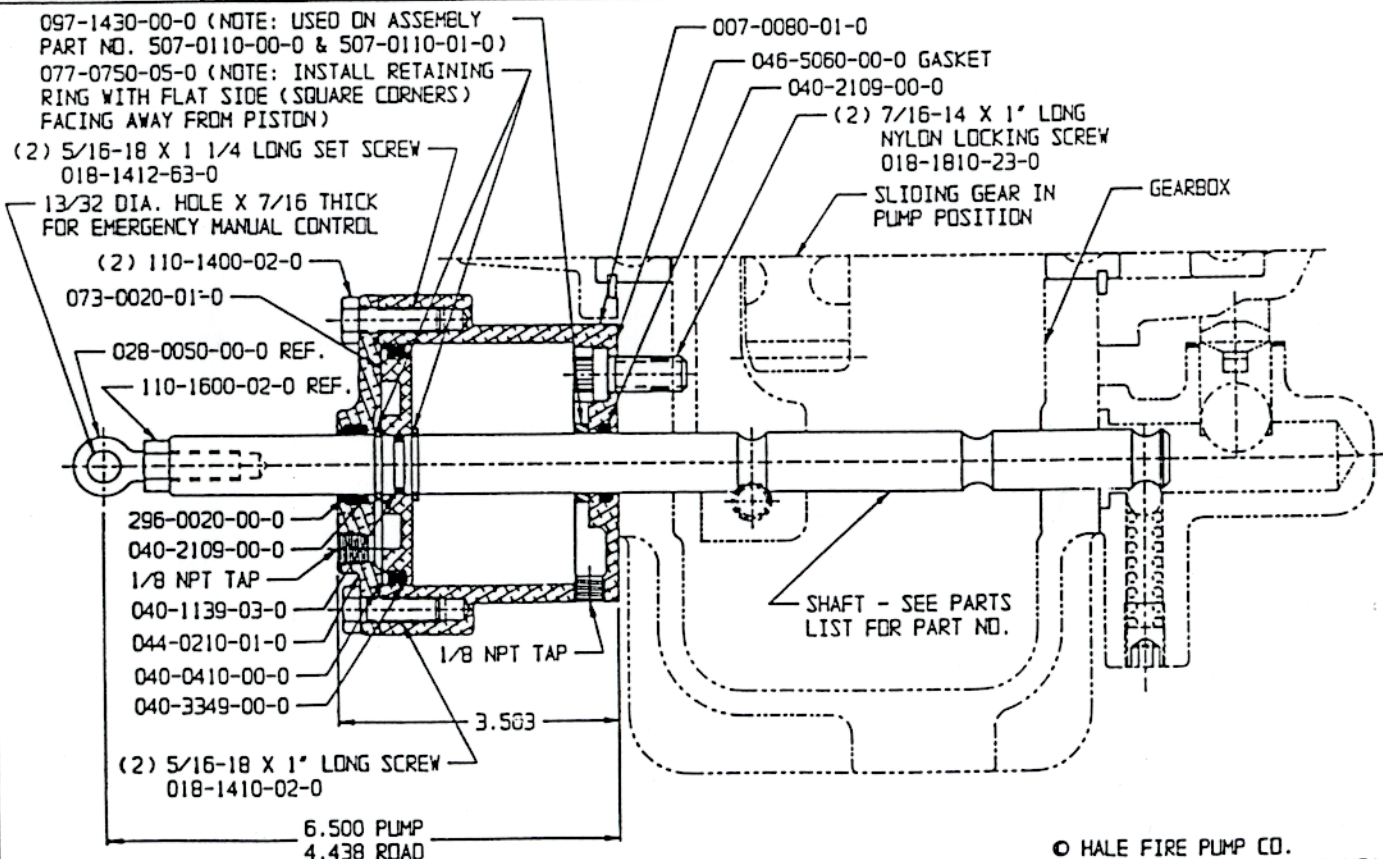


PLATE NO. 533C

HALE TYPE VPS POWER SHIFT

© HALE FIRE PUMP CO.  
CONSHOHOCKEN PA 19428 USA  
1-29-93 JOR



PLATE NO. 595C

