

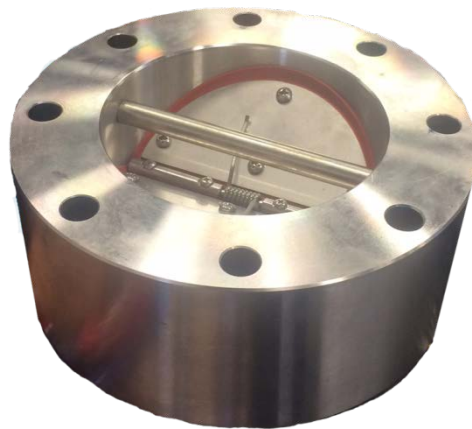


4" Wafer Check Valve Change SB-146

To: All Hale/Class 1 Customers
Subject: 4" Wafer Check Valve Change

The old check valve (part number 038-1570-08-0) will be replaced with the new check valve (part number 538-00032). The transition occurred August 2017. The new check valve is more rugged and has a longer life. See price list for pricing on this new valve.

This design has the same length and bolt pattern (except for units using the "M" bolt pattern so please consult with customer service to ensure you have correct fitment before ordering):



Please Contact Hale Customer Service at 1-800-533-3569 or Halettechnicalservice@idexcorp.com if you have any questions or need assistance.