



## SERVICE BULLETIN —

NEWS ABOUT HALE PUMPS AND PRODUCTS

November 8, 1965

### SERVICE BULLETIN #13

TO: ALL MAJOR PUMP CUSTOMERS

SUBJECT: Remote Control Brackets  
(2419D and 2424D)

Gentlemen:

In line with the constant improvement of Hale pumps and accessories, on September 13, 1963 we instituted the use of a Teflon Bearing in remote control brackets (2419D and 2424D) on the BL and B Discharge Valves. It was noted that after a period of time, due to dust, water and foreign matter, that there was a binding action where the remote operating stem #2446D passes through the subject bracket(s).

The brackets, prior to the above date, were bored to 1.124/1.125, the brackets after this date were bored to 1.185/1.186 allowing clearance for the BL-250 Teflon Bearing.

In future repair of fire apparatus that has BL and B valves prior to September 13, 1963 it is recommended that the remote brackets (2419D and 2424D) be bored out for the BL-250 Teflon Bearings. The use of the teflon bearings will help eliminate any complaints on hard to open remote control valves.

We have enclosed Plate #539 for reference.

Yours very truly,  
HALE FIRE PUMP COMPANY

C. R. Shaffer  
Service Manager

encl.

HALE FIRE PUMP COMPANY

CONSHOHOCKEN, PA.

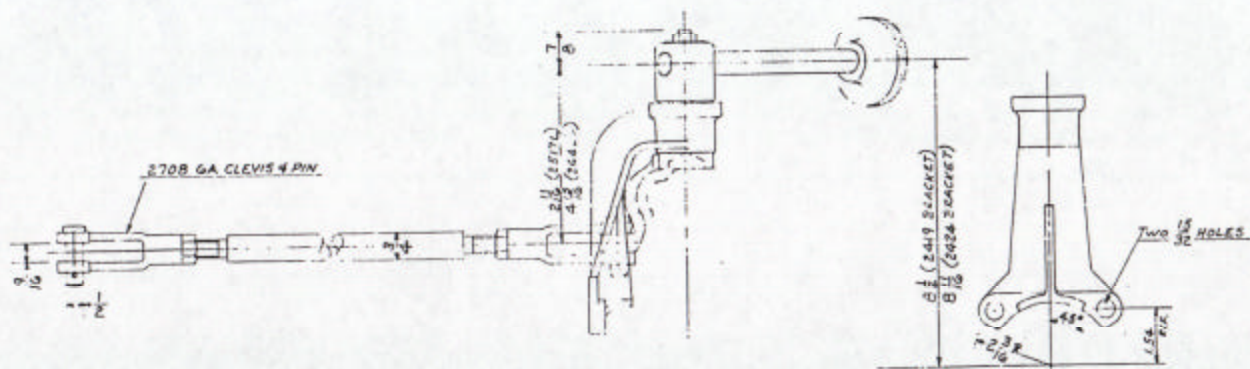
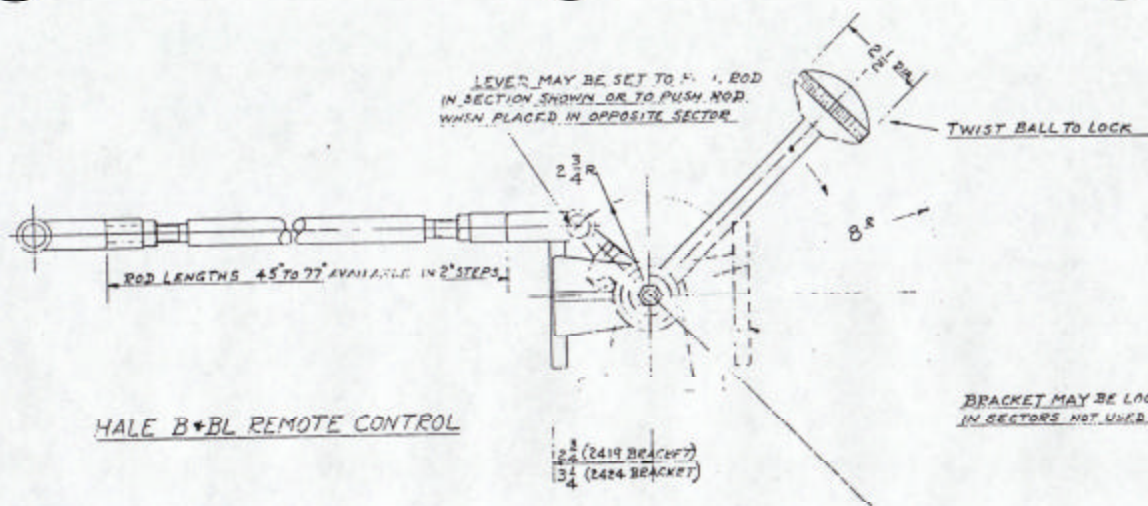


PLATE NO. 539

HALE FIRE PUMP CO.  
CONSHOHOCKEN, PA.