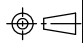
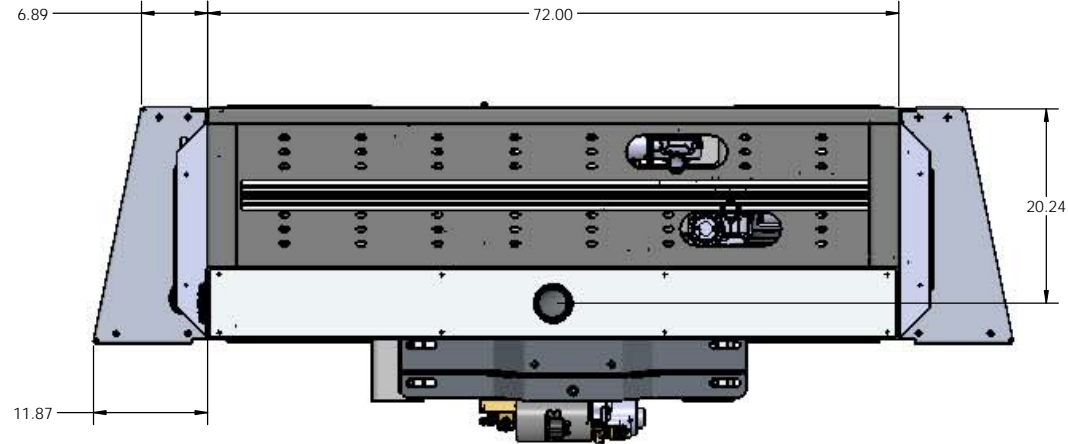
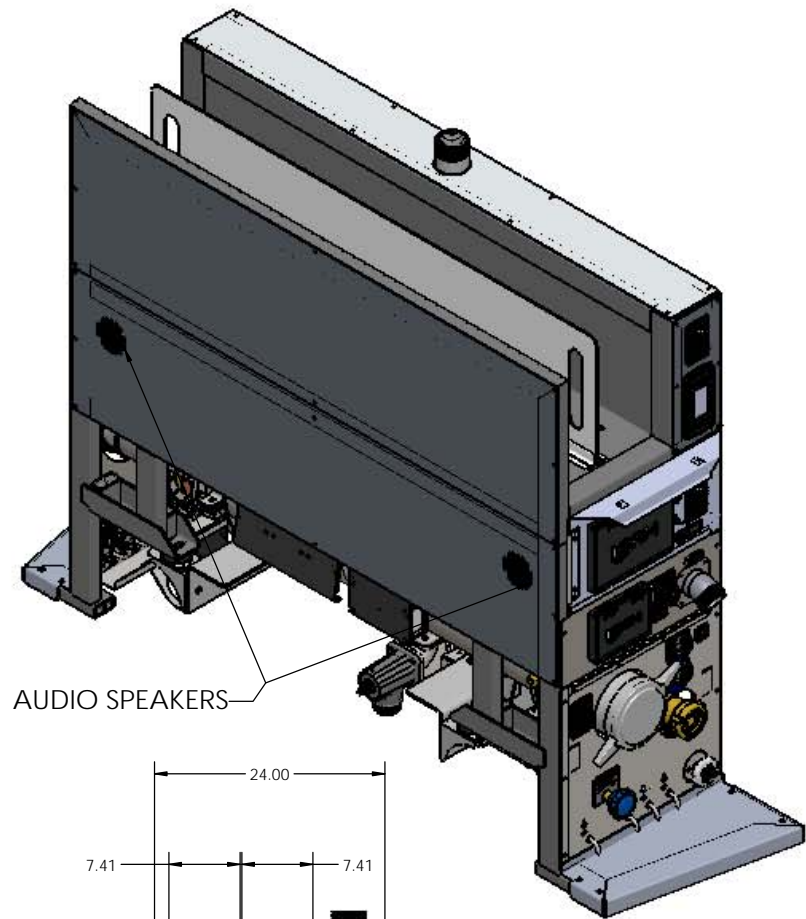


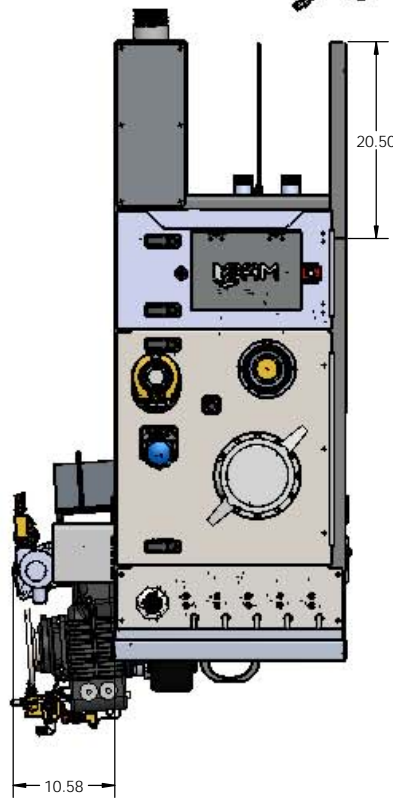
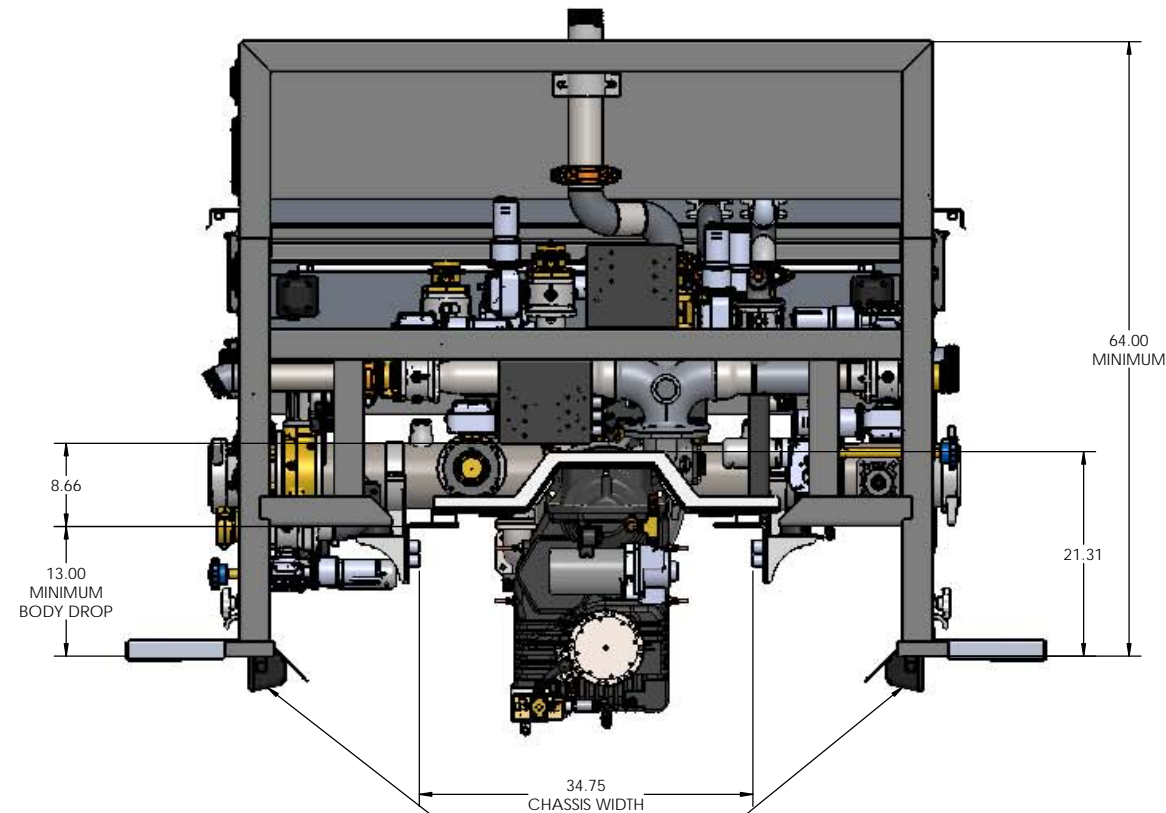
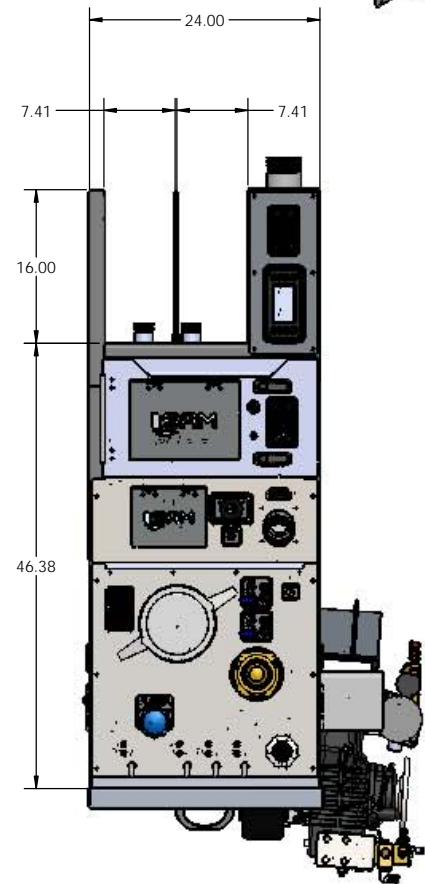
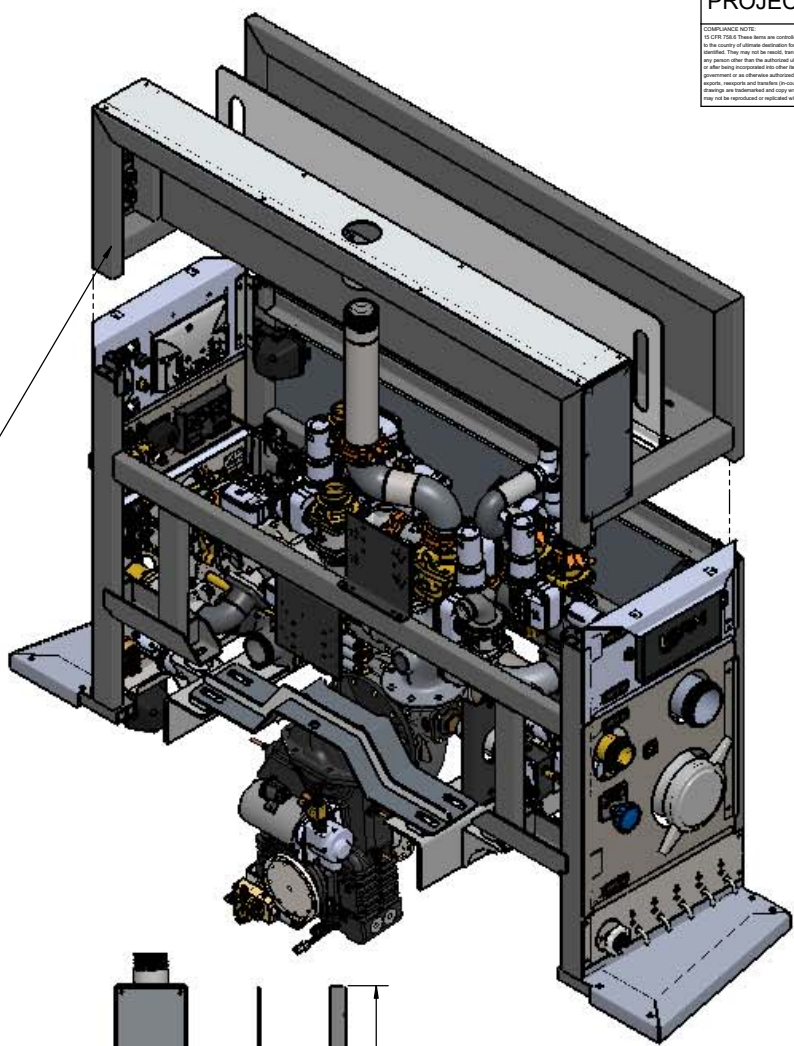
IF IN DOUBT ASK

PROJECTION: 

COMPLIANCE NOTE:
15 CFR 758.5 These items are controlled by the U.S. Government and authorized for export only to the country of ultimate destination for use in the ultimate design or end-use of the item. They may not be re-exported, transferred, or otherwise disposed of, to any other country or to any person other than the authorized ultimate consignee or end-user(s), either in their original form or after being incorporated into other items, without first obtaining approval from the U.S. Government or an otherwise authorized U.S. law and regulation. The term "ultimate consignee" means the person or persons (including companies) designated under the License Request (LR). These drawings are trademarks and copy without intellectual property of OCE and its subsidiaries, and may not be reproduced or used without the express written permission of OCE.



REMOVABLE TOP BODY



AUDIO SPEAKERS

| REVISIONS | | | | | | |
|-----------|------|------|--|-----|-----------|------|
| ECN | REV. | ZONE | CHANGED FROM | BY | DATE | APVD |
| | 1 | | ORIGINAL RELEASE | KTN | 07FEB2020 | JLS |
| | 2 | | MOVED COMPONENTS FOR MORE CLEARANCE, ADDED SMARTFOAM CONTROL | KTN | 12FEB2020 | JLS |
| | 3 | | ADDED UV1100 & UV800 SCREEN PROTECTORS | KTN | 11MAR2020 | JLS |

UNLESS OTHERWISE SPECIFIED
DIMENSIONS ARE IN INCHES
TOLERANCE FOR INCHES DIMENSIONS:
X: ± 0.04
X.X: ± 0.02
X.XX: ± 0.01
X.XXX: ± 0.005
ANGLES: $\pm 1^\circ$
SURFACE TEXTURE IN $\mu\text{m Ra}$
REMOVE ALL BURRS AND SHARP
EDGES, 0.01MAX

COPYRIGHT ©
NOT TO BE REPRODUCED OR USED TO
MAKE OTHER DRAWINGS OR MACHINERY

FSG OF
IBX
IBEX CORPORATION

MATERIAL

MADE FROM

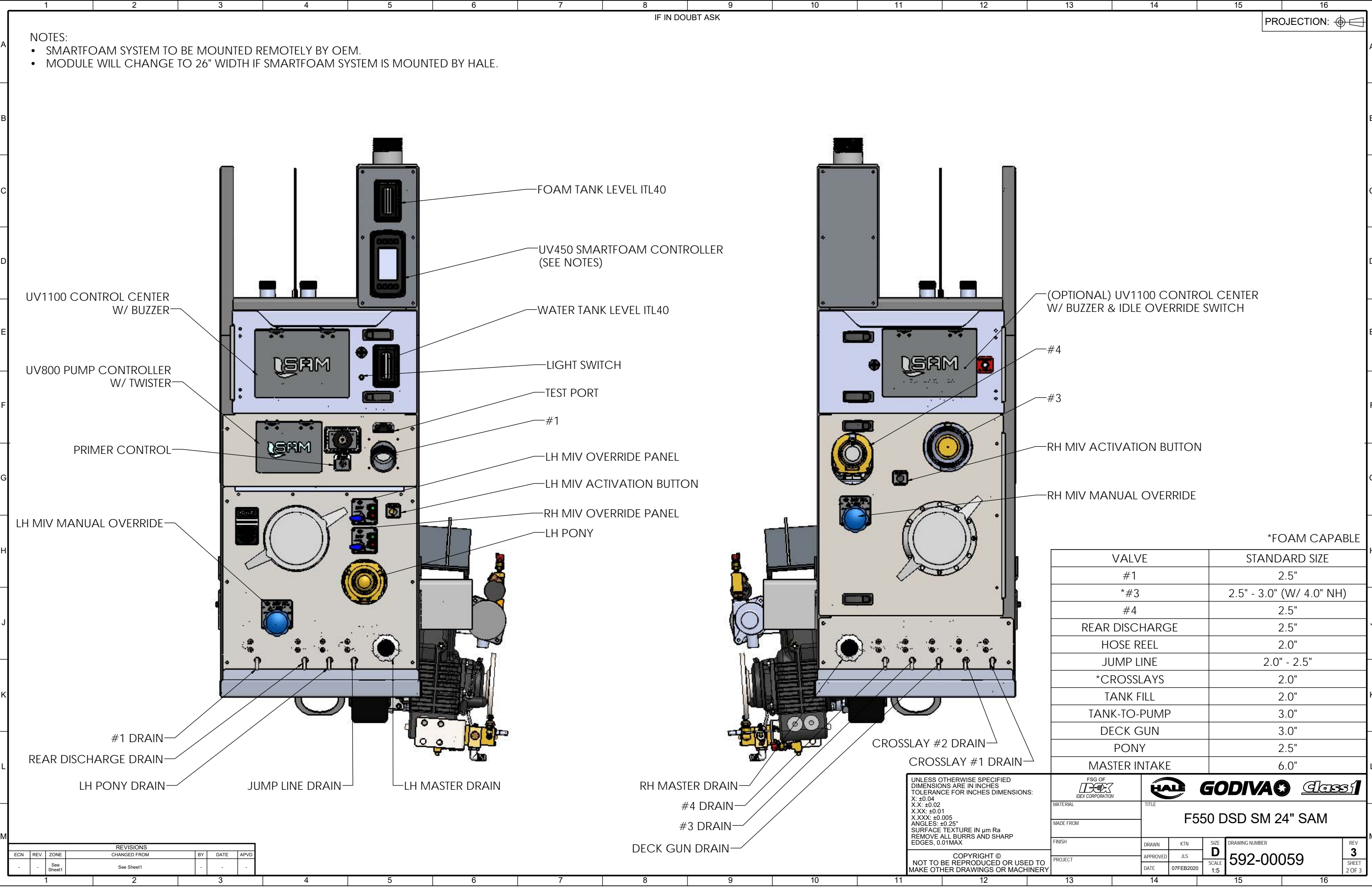
FINISH

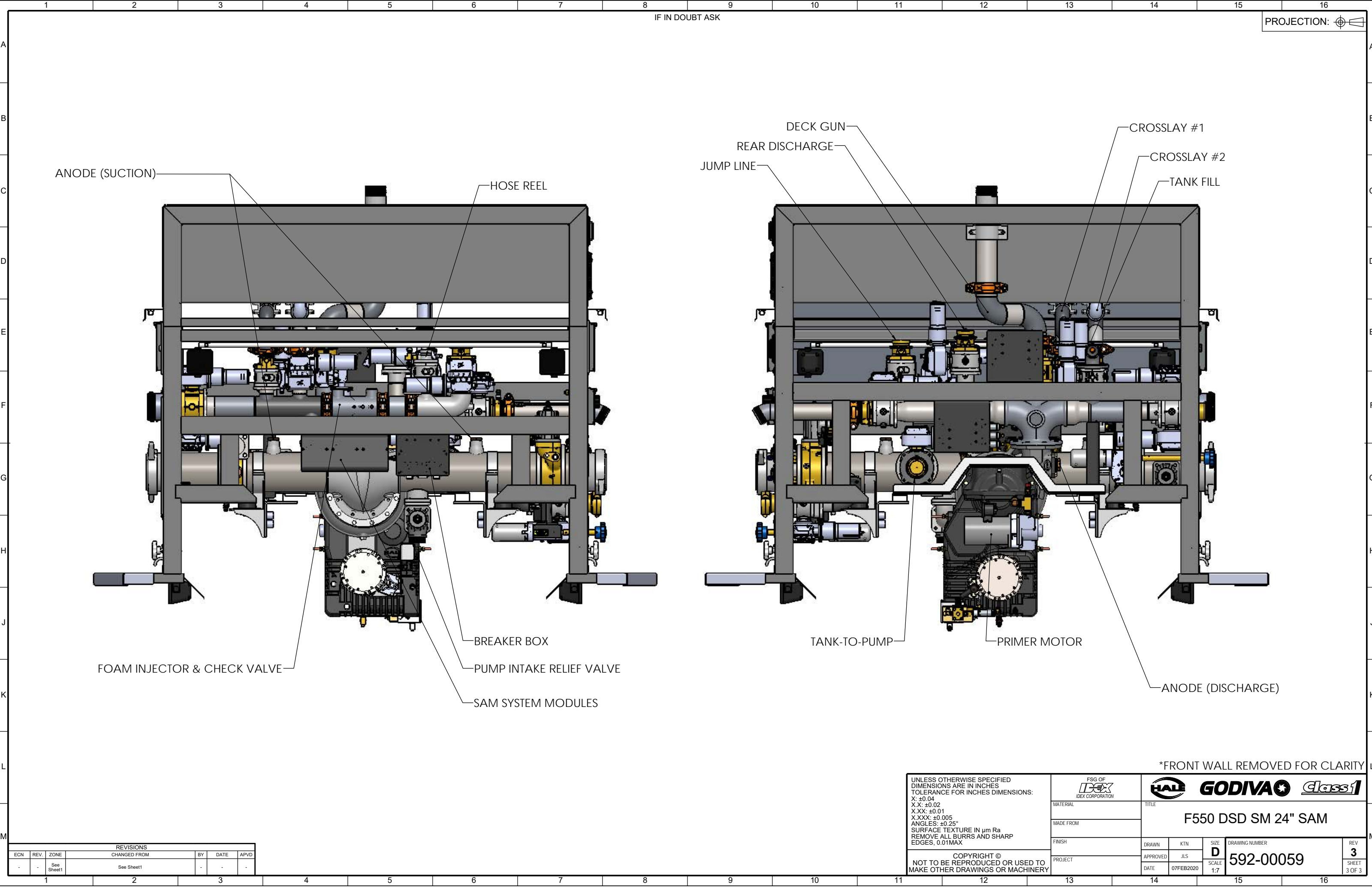
PROJECT

HALE **GODIVA** **Class1**

TITLE
F550 DSD SM 24" SAM

| | | | | |
|----------|-----------|------------------|-----------------------------|-----------------|
| DRAWN | KTN | SIZE D | DRAWING NUMBER 592-00059 | REV 3 |
| APPROVED | JLS | SCALE 1:10 | | SHEET 1 OF 3 |
| DATE | 07FEB2020 | | | |





| REVISIONS | | | | | |
|-----------|------|------------|--------------|----|------|
| ECN | REV. | ZONE | CHANGED FROM | BY | DATE |
| - | - | See Sheet1 | See Sheet1 | - | - |

UNLESS OTHERWISE SPECIFIED
DIMENSIONS ARE IN INCHES
TOLERANCE FOR INCHES DIMENSIONS:
X: ±0.04
X.X: ±0.02
X.XX: ±0.01
X.XXX: ±0.005
ANGLES: ±0.25°
SURFACE TEXTURE IN µm Ra
REMOVE ALL BURRS AND SHARP
EDGES, 0.01MAX

COPYRIGHT ©
NOT TO BE REPRODUCED OR USED TO
MAKE OTHER DRAWINGS OR MACHINERY

| | |
|---|--|
| FSG OF IDEX IDEX CORPORATION | |
| MATERIAL | |
| MADE FROM | |
| FINISH | |
| PROJECT | |

| | | | | | |
|-------------------------------------|--|-----------------|--|-------------------|--|
| TITLE F550 DSD SM 24" SAM | | DRAWN KTN | | DATE 07FEB2020 | |
| SIZE D | | APPROVED JLS | | SCALE 1:7 | |
| DRAWING NUMBER 592-00059 | | REV 3 | | SHEET 3 OF 3 | |