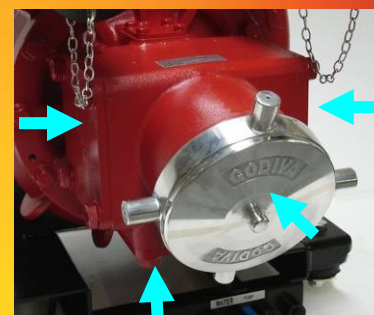




Model shown: P1A series pump



*Integrated Collecting Head
(optional extra)*



*Four possible connection
points on suction tube*



Mounting platform

the single-pressure fire pump for rear or midship mounting

Features

- Most compact pump in its class
- Modular discharge manifold design
- Mounting platform fitted as standard
- Optimal design for ease of maintenance
- Light alloy and gunmetal options
- Enhanced material selection
- Full compliance with EN1028:1
- Twin high efficiency piston primers
- Auto/manual piston priming options
- New design of suction tube

Benefits

- More room for additional equipment
- Increases installation flexibility
- Faster/easier installation
- Reduced whole life costs
- To suit pumped water type
- Improved corrosion resistance
- Meets with European and International standards
- Quicker water delivery
- Operational flexibility
- Improved installation flexibility

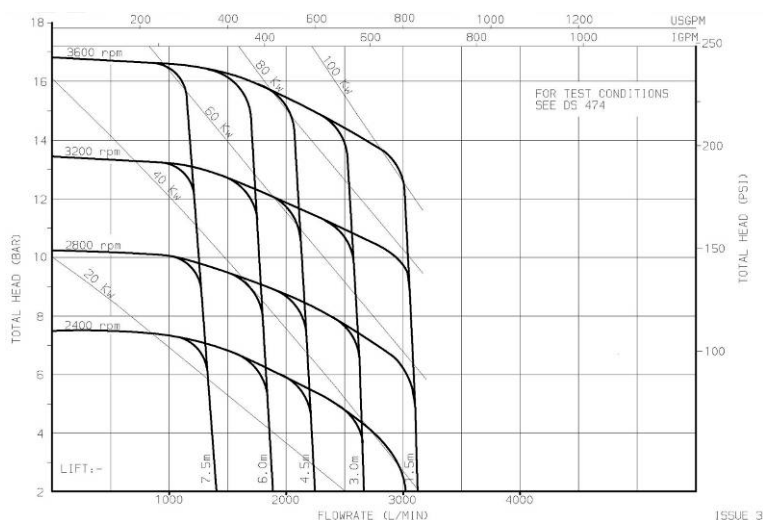
The Godiva Prima is a single stage centrifugal pump designed for midship or rear vehicle mounting. The pump is supplied with a ready-to-use mounting platform for ease of installation. The platform incorporates all necessary pump drainage connections and lifting points for forklift use.

The modular low pressure delivery manifold allows for flexibility of installation configurations. The suction tube provides three possible tank-to-pump connection points and integrated collecting head options further enhance the installation flexibility.

Enhanced material selection ensures long life and reliability. The pump is designed for easy maintenance and reduced whole life costs.

Performance Data – P1A or P1B	2010	3010	4010	6010
Priming Performance Range	To 7.5m	To 7.5m	To 7.5m	To 7.5m
Priming Speed (recommended)	2500 rpm	2500 rpm	2500 rpm	2500 rpm
Maximum Suction Pressure	12 bar	12 bar	12 bar	12 bar
Maximum Recommended Speed	3600 rpm	3600 rpm	3600 rpm	3600 rpm
Minimum idle speed	900 rpm	900 rpm	900 rpm	900 rpm
For other applications please contact Godiva Ltd.				
Maximum Outlet Pressure – Low Pressure (EN compliance)	17 bar	17 bar	17 bar	17 bar
Maximum Flow – Low Pressure	3400 l/min	4200 l/min	6200 l/min	7750 l/min
Weight (based on aluminium model) Approx. Weights, will vary according to specification and gunmetal spec	85 kg	92.5 kg	125.5 kg	125.5 kg
Typical Dimensions (L x W x H) mm	714 x 580 x 626	772 x 764 x 661	772 x 764 x 661	772 x 764 x 661
EN1028 Priming Times from 7.5m	22 sec (4" hose)	32 sec (5½" hose)	32 sec (5½" hose)	68 sec (8" hose)
Thermal Relief Valve Activation (optional feature)	42°C or 74°C	42°C or 74°C	42°C or 74°C	42°C or 74°C

Basis of Data: 2010 with Piston Primer, 2 UK Delivery Valves, 4" RT suction. 3010/4010/6010 with Piston Primer, 4 UK Delivery Valves. 3010/4010 5 ½" RT Suction, 6010 8" suction. Mounted on standard platform.



P1_2010 Performance curve

EN1028:1 Rated performance

P1_2010	P1_3010	P1_4010	P1_6010
2000 L/min	3000 L/min	4000 L/min	6000 L/min
At 10 bar	At 10 bar	At 10 bar	At 10 bar
3m lift	3m lift	3m lift	3m lift

Options:

- Round the pump low pressure foam system and high pressure foam system
- Water ring primer
- Control panel
- Two and three way collecting head options
- Reverse rotation
- Suction and delivery connection options
- Gearbox, choice of ratios and position available