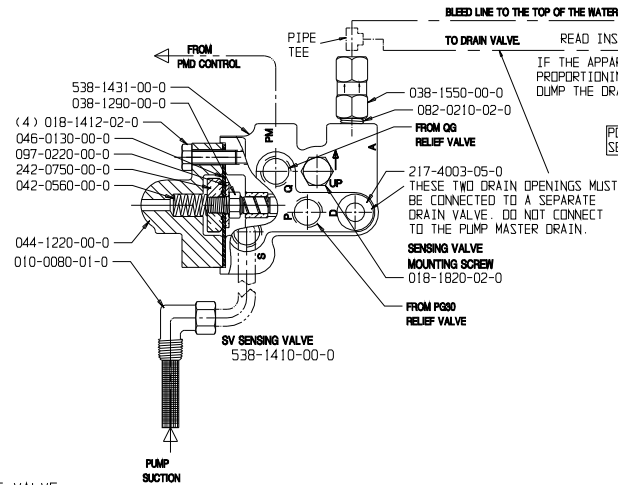
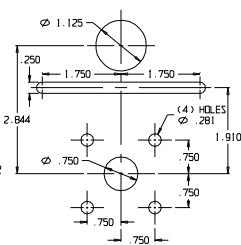
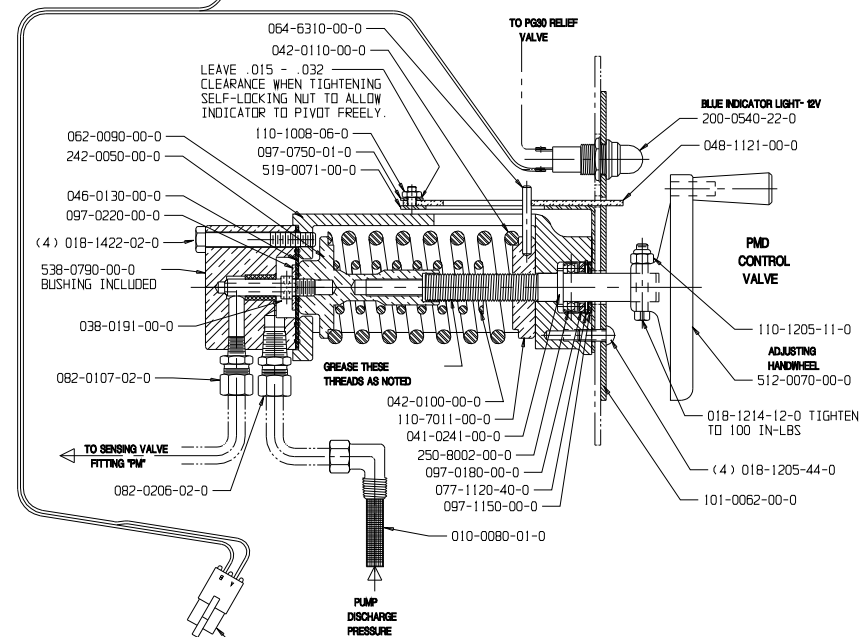


HALE TYPE TPM RELIEF VALVE SYSTEM - FDNY

INSTRUCTION PLATE-PANEL MOUNTING HOLE DIMENSIONS

POWER CONNECTION
SEE ELECTRICAL INFORMATION

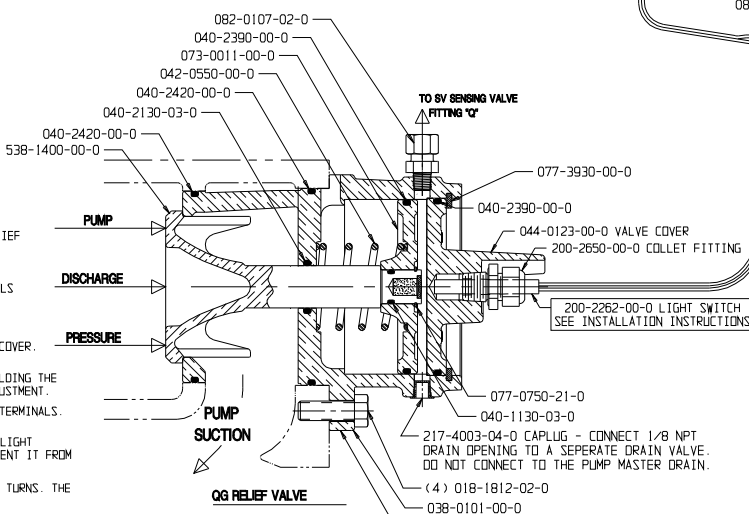
INSTALL THE PMD CONTROL VALVE AT A LEVEL HIGHER THAN THE MAIN RELIEF VALVE SO THAT THE CONTROL VALVE AND TUBING LINES WILL DRAIN NATURALLY AND COMPLETELY. THIS IS IMPORTANT TO PREVENT DAMAGE FROM FREEZING.



- 1- SET THE WHITE PRESSURE INDICATOR ON THE PMO CONTROL VALVE TO A POSITION SLIGHTLY ABOVE THE NORMAL OPERATING PRESSURE. DO THIS EVEN BEFORE YOU INCREASE THE PUMP ENGINE RPM.
- 2- ONCE YOU HAVE REACHED THE NORMAL OPERATING PRESSURE USING THE PUMP DISCHARGE PRESSURE GAUGE (WITH OR WITHOUT THE PUMP DISCHARGING WATER) SLOWLY MOVE THE ADJUSTING HANDWHEEL COUNTERCLOCKWISE UNTIL THE RELIEF VALVE OPENS AND THE PILOT LIGHT GOES ON. THIS INDICATES THE PILOT LIGHT IS NOW ON.
- 3- SLOWLY TURN HANDWHEEL CLOCKWISE UNTIL THE PILOT LIGHT GOES OFF AND PRESSURE GAUGE RETURNS TO SET. THE RELIEF VALVE WILL NOW OPERATE AT THE SET PRESSURE.
- 4- WHEN THE PUMP IS NOT IN OPERATION THE HANDWHEEL SHOULD BE TURNED CLOCKWISE BACK TO A POSITION SLIGHTLY ABOVE THE NORMAL OPERATING PRESSURE.
- 5- WHEN THE PUMP IS RUNNING, A FLASHING RED LIGHT INDICATES THE INTERNAL CG RELIEF VALVE IS IN OPERATION. A PILOT LIGHT FLASH WHEN BOTH THE INTERNAL CG RELIEF VALVE AND THE EXTERNAL PG30 DUMP VALVE ARE OPERATING.
- 6- READ INSTALLATION AND OPERATION MANUAL FOR ADDITIONAL OPERATING INSTRUCTIONS.
- 7- IF THE TPM RELIEF VALVE SYSTEM IS TO BE USED WITH DETROIT DIESEL ENGINE CONTROL

- 1- MAKE SURE 200-2650-00-0 COLLET FITTING IS TIGHTENED INTO THE 044-0123-00-0 VALVE COVER. BACK OFF 1 TO 1-1/2 TURNS.
- 2- INSTALL THE 200-2662-00-0 LIGHT SWITCH IN THE COLLET FITTING. LEAVE THE COLLET HOLDING THE LIGHT SWITCH SLIGHTLY LOOSE SO THAT LIGHT SWITCH CAN BE MOVED IN AND OUT FOR ADJUSTMENT.
- 3- CONNECT THE PANEL MOUNTED INDICATOR LIGHT OR A SUITABLE TEST LIGHT TO THE SWITCH TERMINALS. WITH THE LIGHT SWITCH PULLED NEARLY ALL THE WAY OUT, THE LIGHT SHOULD BE LIT.
- 4- WITH THE PUMP NOT RUNNING AND THE RELIEF VALVE FULLY CLOSED (AS SHOWN), PUSH THE LIGHT SWITCH IN UNTIL THE LIGHT GOES OUT. HOLD THE COLLET FITTING WITH A WRENCH TO PREVENT IT FROM TURNING, AND TIGHTEN THE COLLET.
- 5- DISCONNECT THE ELECTRICAL CONNECTOR. TIGHTEN THE ENTIRE COLLET FITTING 1 TO 1-1/2 TURNS. THE SWITCH IS NOW IN THE PROPER POSITION. RECONNECT THE ELECTRICAL CONNECTOR.
- 6- VERIFY PROPER OPERATION OF THE RELIEF VALVE AND INDICATOR LIGHT BEFORE PLACING APPARATUS IN SERVICE.

INSTALL WITH ARROW (MARKED "TOP TPM")
POINTING UP FOR PROPER VALVE ALIGNMENT.



MATING CONNECTOR
NOT PROVIDED BY HALE

— ELECTRICAL CONNECTOR
PROVIDED WITH LIGHT SWITCH
REF: PACKARD WEATHER PACK 12015792
INSTALLER CAN REMOVE THIS CONNECTOR
AND REPLACE WITH AN APPROPRIATE
SEALED CONNECTOR AS REQUIRED

FAILURE TO FOLLOW THE OPERATING, LUBRICATION AND MAINTENANCE REQUIREMENTS SET FORTH HERE AND IN THE OPERATING AND INSTRUCTION MANUAL MAY RESULT IN SERIOUS PERSONAL INJURY AND/OR DAMAGE TO EQUIPMENT.

TEST THE RELIEF VALVE OFTEN TO BE SURE IT MOVES FREELY. THIS IS DONE BY TURNING THE CONTROL VALVE ADJUSTING HANDWHEEL CLOCKWISE AS FAR AS POSSIBLE. BRING THE PUMP PRESSURE UP TO 150 PSI AND TURN HANDWHEEL COUNTERCLOCKWISE UNTIL THE RELIEF VALVE OPENS. TURNING THE HANDWHEEL COUNTERCLOCKWISE AT 150 PSI WILL CAUSE THE RELIEF VALVE AND CONTROL TO OPERATE, THIS WORKING ACTION FREES THE VALVE AND HELPS TO INSURE PROPER OPERATION. THE PMO CONTROL SHOULD BE LUBRICATED AT LEAST EVERY SIX MONTHS. TURN THE HANDWHEEL CLOCKWISE AS FAR AS POSSIBLE AND BRUSH A THIN LAYER OF ALUMINUM BASE GREASE OR MOLYBDENUM DISULFIDE ON THE THREADED SHAFT WHEN INDICATED.

ON THE THREADED SHAFT WHERE
APPROVED GREASES ARE:
DOW CORNING BR2-PLUS,
LUBRIPLATE-FISKE #3000,
SHELL SUPER DUTY GREASE

IMPERIAL #777
MOBIL-MOBILGREASE SPECIAL
SUN OIL-SUNOCO MOLY #2EP



HALE PRODUCTS, INC.
A Unit of IDEX Corporation
Conshohocken, PA 19428 USA

ECO	NO	REV	CHANGED FROM	BY	DATE	APVD	 <p>HALE PRODUCTS, INC. A Unit of IDEX Corporation Conshohocken, PA 19428 USA</p>
00-435	A	RELEASED		rv	5-2-00	MAI	
<p>NOT TO BE REPRODUCED OR USED IN ANY MANNER WITHOUT WRITTEN PERMISSION OF IDEX CORPORATION</p>							

ATTACHMENT

PLATE NO. 930AA