

FOR PANEL THICKNESSES OVER .125, SCREWS LONGER THAN THE (4) 1/4-20 X 5/8 LG SUPPLIED BY HALE WILL BE REQUIRED. MAINTAIN AT LEAST 3/8 THREAD ENGAGEMENT IN SPRING HOUSING.

INSTRUCTION PLATE AND PANEL MOUNTING DETAILS

MAINTENANCE INSTRUCTIONS
TEST THE RELIEF VALVE OFTEN TO BE SURE THAT IT MOVES FREELY. TO DO THIS, FIRST TURN THE ADJUSTING HANDWHEEL CLOCKWISE AS FAR AS POSSIBLE. NEXT, BRING THE PUMP PRESSURE UP TO 150 PSI AND TURN THE HANDWHEEL COUNTERCLOCKWISE UNTIL THE RELIEF VALVE OPENS. ALSO VERIFY THAT THE INDICATOR LIGHT IS OPERATING.

TURNING THE HANDWHEEL CLOCKWISE AND COUNTERCLOCKWISE AT 150 PSI WILL CAUSE THE RELIEF VALVE AND CONTROL VALVE TO OPERATE. THIS WORKING ACTION MAKES SURE THAT THE VALVE MOVES FREELY AND HELPS TO ENSURE PROPER OPERATION.

THE PM CONTROL SHOULD BE LUBRICATED AT LEAST EVERY 5 MONTHS. TO DO THIS, TURN THE HANDWHEEL CLOCKWISE AS FAR AS POSSIBLE AND APPLY A LITHIUM BASE GREASE WITH 1% TO 3% MOLYBDENUM DISULFIDE ON THE THREADED PART OF THE ADJUSTING STEM.

SOME RECOMMENDED LUBRICANTS INCLUDE:

DOW CORNING BR2-PLUS FISKE - LUBRIPLATE NO. 3000 SHELL SUPER DUTY GREASE	IMPERIAL NO. 777 MOBIL - MOBILGREASE SPECIAL SUN OIL - SUNDOL MOLY NO. 2EP
--	--

ELECTRICAL INFORMATION
THE HALE 200-2450-00-0 LIGHT SWITCH IS INTENDED FOR USE ONLY WITH THE HALE PROVIDED INDICATOR LIGHT. ELECTRICAL CHARACTERISTICS: 10 AMPS AT 24 VOLTS DC, NORMALLY CLOSED.

THE STANDARD HALE 546-00011-002 AMBER INDICATOR LIGHT KIT IS INTENDED FOR 12 OR 24 VOLT DC SERVICE. 513-00067-000 FLASHER IS INTENDED FOR 12 VOLT DC SERVICE ONLY. CONSILT FACTORY FOR 24 VOLT DC FLASHER..

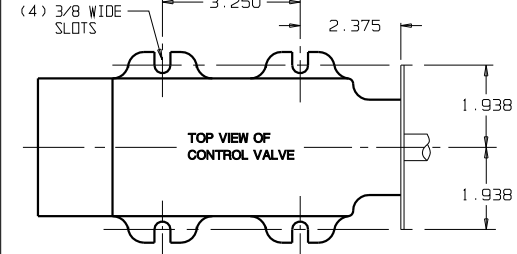
CIRCUIT PROTECTION (FUSE, CIRCUIT BREAKERS, ETC.) IS RECOMMENDED, BUT IS NOT THE RESPONSIBILITY OF HALE PRODUCTS.

SELECTION AND INSTALLATION OF ELECTRICAL COMPONENTS AND WIRING OTHER THAN THAT PROVIDED IS NOT THE RESPONSIBILITY OF HALE PRODUCTS. SYSTEM DESIGN AND INSTALLATION MUST BE DONE ONLY BY PROPERLY QUALIFIED PERSONS.

DRAIN CONNECTION NOTES
THE RELIEF VALVE REQUIRES A SEPARATE DRAIN CONNECTION. DO NOT CONNECT TO THE PUMP MASTER DRAIN.

THE DRAIN MUST ALLOW THE RELIEF VALVE, PM CONTROL VALVE AND ALL TUBING TO DRAIN NATURALLY AND COMPLETELY TO PROTECT FROM FREEZING WHEN NOT IN USE.

THE HALE MMD6 DRAIN VALVE IS RECOMMENDED. THE MMD6 HAS 6 INDEPENDENT DRAIN PORTS CONTROLLED BY A SINGLE KNOB AND IS INTENDENT FOR THIS TYPE OF APPLICATION. FOR MORE INFORMATION, SEE CURRENT REVISION OF HALE PLATE NO. 950AA.



MOUNTING FEET LOCATIONS

PLATE NO. 547CH

- INSTRUCTIONS FOR INSTALLING LIGHT SWITCH**
- 1- ASSEMBLE THE 200-2450-00-0 LIGHT SWITCH TO 242-0081-00-0 SWITCH STRAP USING NUT 110-7610-00-0.
 - 2- INSTALL THE SWITCH STRAP AND LIGHT SWITCH IN THE SWITCH BRACKET, LEAVE THE TWO SCREWS ATTACHING THE SWITCH STRAP TO THE SWITCH BRACKET SLIGHTLY LOOSE TO ALLOW THE SWITCH TO MOVE IN AND OUT FOR ADJUSTMENT.
 - 3- CONNECT THE PANEL MOUNTED INDICATOR LIGHT OR SUITABLE TEST LIGHT TO THE SWITCH TERMINALS. WITH THE LIGHT SWITCH PLUNGER NOT IN CONTACT WITH THE END OF THE POPPET, THE LIGHT SHOULD BE LIT.
 - 4- WITH THE PUMP NOT RUNNING AND THE RELIEF VALVE FULLY CLOSED (AS SHOWN), PUSH THE LIGHT SWITCH IN UNTIL THE SWITCH PLUNGER MAKES CONTACT WITH THE END OF THE POPPET AND THE LIGHT GOES OUT. THE SWITCH IS NOW IN THE PROPER POSITION. TIGHTEN THE SCREWS HOLDING THE SWITCH STRAP TO THE BRACKET.
 - 5- VERIFY PROPER OPERATION OF THE RELIEF VALVE AND INDICATOR LIGHT BEFORE PLACING APPARATUS IN SERVICE.
- INSTRUCTIONS FOR SETTING "P" SERIES RELIEF VALVE**
- 1- TO SET THE RELIEF VALVE. BRING THE PUMP UP TO DESIRED OPERATING PRESSURE. USE THE DISCHARGE PRESSURE GAUGE.
 - 2- ONCE YOU HAVE REACHED THE DESIRED OPERATING PRESSURE ON THE PUMP DISCHARGE PRESSURE GAUGE (WITH OR WITHOUT THE PUMP DISCHARGING WATER) SLOWLY MOVE THE ADJUSTING HANDWHEEL COUNTERCLOCKWISE UNTIL THE RELIEF VALVE OPENS AND THE AMBER INDICATOR LIGHT COMES ON.
 - 3- TURN HANDWHEEL ABOUT 1/2 TURN CLOCKWISE UNTIL THE AMBER INDICATOR LIGHT GOES OFF. THE RELIEF VALVE WILL NOW OPERATE AT THE SET PRESSURE.
 - 4- WHEN THE PUMP IS NOT IN OPERATION THE HANDWHEEL SHOULD BE TURNED CLOCKWISE BACK TO A POSITION SLIGHTLY ABOVE THE NORMAL OPERATING PRESSURE.
 - 5- WHEN THE PUMP IS RUNNING, A LIT INDICATOR LIGHT INDICATES THE RELIEF VALVE IS IN OPERATION.
 - 6- READ THE OPERATING AND INSTRUCTION MANUAL FOR ADDITIONAL OPERATING INSTRUCTIONS.

WARNING

FAILURE TO FOLLOW THE INSTALLATION, OPERATION, LUBRICATION AND MAINTENANCE REQUIREMENTS SET FORTH HERE AND IN THE OPERATION AND INSTRUCTION MANUAL MAY RESULT IN SERIOUS PERSONAL INJURY AND/OR DAMAGE TO EQUIPMENT

ALL INSTALLATION DETAILS MUST CONFORM TO APPLICABLE NFPA AND SAE STANDARDS
VERIFY PROPER RELIEF VALVE OPERATION BEFORE PLACING APPARATUS IN SERVICE

ASSEMBLY PART NO.	NAME	PIPE CONNECTIONS	WEIGHT
538-1040-79-0	P RELIEF VALVE LESS PM CONTROL VALVE	FLG. INLET, OUTLET FOR "115" FLG.	20
538-1040-51-0	P25F RELIEF VALVE WITH PM CONTROL VALVE	2 1/2 NPT INLET AND OUTLET	36
538-1040-52-0	P25 RELIEF VALVE WITH PM CONTROL VALVE	FLG. INLET, 2 1/2 NPT OUTLET	33
538-1040-53-0	P30 RELIEF VALVE WITH PM CONTROL VALVE	FLG. INLET, 3 NPT OUTLET	32
538-1040-54-0	P30F RELIEF VALVE WITH PM CONTROL VALVE	3 NPT INLET AND OUTLET	34
562-0080-50-0	PM CONTROL VALVE		10
538-1040-13-0	P30V RELIEF VALVE WITH PM CONTROL VALVE	3 VICTAULIC INLET AND OUTLET	30

