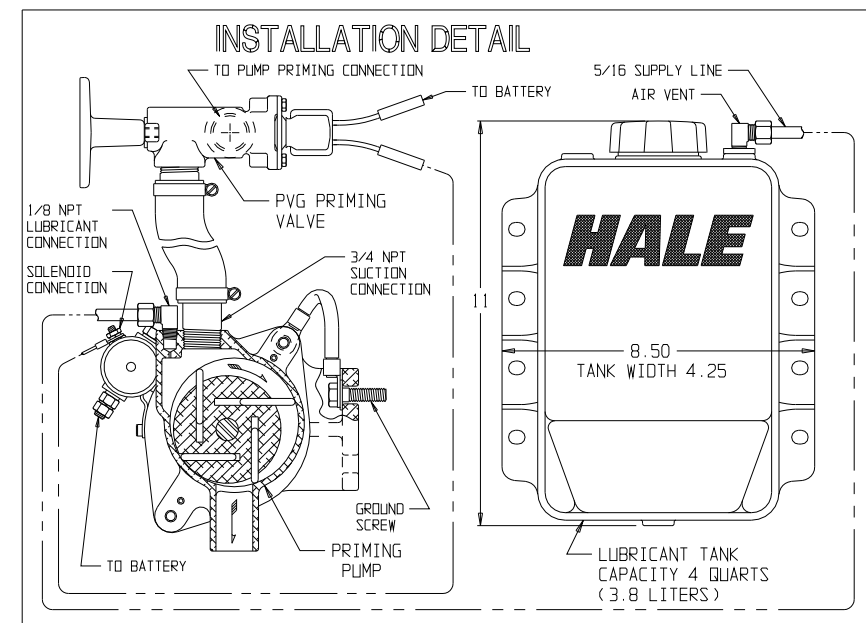
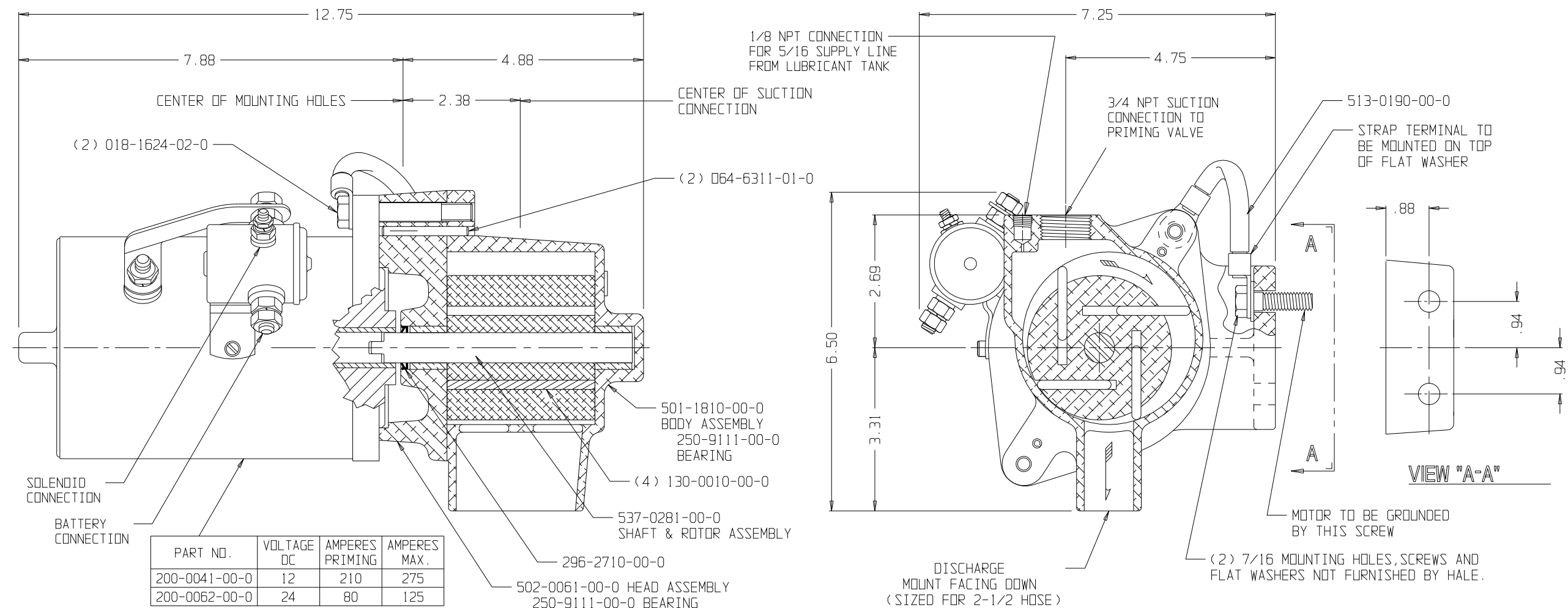


HALE TYPE SMP-12
SMP-24 PRIMING PUMP



NOTES:

- 1) MOTOR ROTATION IS THE SAME FOR BOTH NEGATIVE AND POSITIVE GROUND SYSTEMS.
- 2) WEIGHT OF PRIMING PUMP AND MOTOR IS 27 LBS. (12.2Kg).
- 3) THEORETICAL DISPLACEMENT IS .066 GAL. (.25 LITERS) PER REVOLUTION OR 50,000 CU. IN. (819,350 CU. CM) AIR PER MINUTE.
- 4) VACUUM CAPABILITY: 26 IN. Hg (660 MM Hg).
- 5) SEE PLATE NO. 480F FOR HALE PVG PRIMING VALVE DETAILS.
- 6) LUBRICANT TANK PART NO. 108-0012-00-0 IS FURNISHED WITH PRIMING PUMP. CAPACITY: 4 U.S. QUARTS (3.8 LITERS). DIMENSIONS: APPROXIMATELY 11 HIGH X 8-1/2 WIDE X 4-1/4 DEEP. USE ONLY HALE APPROVED LUBRICANT(S).
- 7) DO NOT USE WATER ONLY IN FREEZING CLIMATES.
- 8) THE PROPYLENE GLYCOL MUST BE THE TYPE THAT INCLUDES CORROSION INHIBITORS. AN EXAMPLE WOULD BE THE ANTIFREEZE RECOMMENDED FOR AUTOMOTIVE COOLING SYSTEMS.

| HALE APPROVED LUBRICANT(S) | |
|--|--|
| 1) PROPYLENE GLYCOL AND WATER MIXTURE (SEE NOTE 8) | |
| 2) WATER (SEE NOTE 7) | |

INSTRUCTIONS:

- 1) DO NOT OPERATE PRIMING PUMP WITHOUT LUBRICANT IN TANK.
- 2) USE A MINIMUM OF 1/2 TUBING FOR BOOSTER PUMPS.
- 3) USE A MINIMUM OF 3/4 PIPE FOR MIDSHIP PUMPS.
- 4) CONNECT TO HIGHEST POINT ON DISCHARGE OF PUMP IF PRIMING WHILE PUMP IS STATIONARY.
- 5) CONNECT TO HIGHEST POINT ON THE SUCTION NEAR THE IMPELLER EYE IF PRIMING WHEN PUMP IS RUNNING.
- 6) A SHUT-OFF VALVE, SUCH AS HALE PVG PRIMING VALVE, MUST BE LOCATED IN THE PRIMING LINE BETWEEN THE PRIMING PUMP AND THE MAIN PUMP.
- 7) THE PRIMING PUMP MUST BE MOUNTED SO THAT THE MOTOR SHAFT IS IN A HORIZONTAL PLANE WITH THE PRIMING PUMP DISCHARGE FACING DOWN.
- 8) DURING THE PRIMING OPERATION (EVACUATING AIR), DO NOT RUN THE MOTOR FOR MORE THAN 90 SECONDS.

PLATE NO. 492EB

| ECD NO | REV | CHANGED FROM | BY | DATE | APVD |
|---|-----|-------------------------|---------------|---------|--------------|
| 95-34 | A | ADDED REVISION BLOCK | AJD | 5-18-95 | ROT |
| 96-40 | B | INSTRUCTION NO. 8 ADDED | AJD | 3-1-96 | MAL |
| HALE PRODUCTS, INC. A Unit of IDEX Corporation Conshohocken, PA 19428 USA | | | | | |
| COPYRIGHT © 1995 IDEX CORPORATION NOT TO BE REPRODUCED OR USED TO MAKE OTHER DRAWINGS OR MACHINERY | | | | | |
| DRAWN | | ROT | DATE: 2-19-95 | | SIZE 35 X 25 |
| CHECKED | | ROT | SCALE: FULL | | |