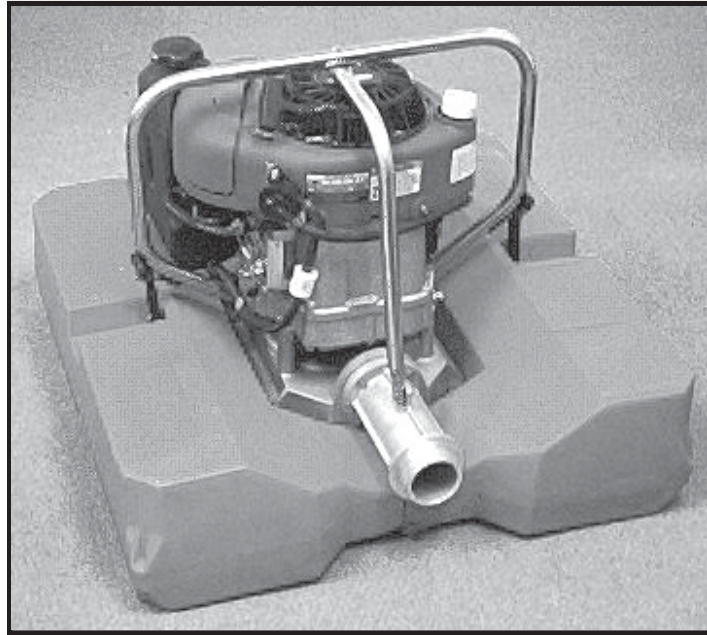


Owner's Manual THE CHIEF 11HP Gas Pump



CUSTOMER CHECKLIST:

Please do the following immediately upon receipt of your pump:

- Inspect pump for shipping damage.
(Report any damage to freight company.)
- Check to see that any/all accessories that you ordered are included.
- Record the pump serial number. This can be found stamped on the top housing, and on the yellow sticker located on the side of the engine.
- Fill out and return warranty card.
NOTE: Warranty is validated upon the receipt of the completed Warranty Registration Card.
- Read all operating and maintenance instructions.



Hale Products Inc, A Unit of IDEX Corporation
700 Spring Mill Avenue
Conshohocken, PA 19428 USA
Phone (610) 825-6300 Fax (610) 825-6440

TABLE OF CONTENTS

| | | | |
|-----------------------------------|---|------------------------------------|------|
| Introduction & Applications | 2 | Specifications | 6 |
| Pump Operation | 3 | Pump Curve | 7 |
| Maintenance | 4 | Accessories | 7 |
| Storage | 4 | Parts list and Diagrams | 8-10 |
| Warnings/Safeguards | 5 | Warranty: Briggs & Stratton: | 11 |
| Troubleshooting | 5 | Otterbine | 12 |

Revised 4/27/05

INTRODUCTION

CONGRATULATIONS! You have just purchased the best pump on the market. At Otterbine®/Barebo, Inc. we are committed to quality products and service. If you have any problems or questions regarding your new pump, please contact your qualified Otterbine distributor or call us at 800-237-8837.

Your new pump is a rugged, well-tested tool, but it requires some routine care and maintenance. Please read this manual before operation.

WARRANTY

The Otterbine® pump is covered by a one-year limited warranty. The engine is warranted by Briggs & Stratton. Both warranties are enclosed, see inside and outside back cover. **The enclosed warranty card must be filled out and returned for your warranty to be valid.**

NOTICE: Pump is shipped with no oil in the engine. Fill with oil before first use.
(See Page 3, Step 1 for more details)

CAUTION: The 1/8" diameter weep hole in the endcap must be kept clear for proper priming and operation. During normal operation, there will be a stream of water coming out of this weep hole.

Hale Model #545-4091-07-0 (National Hose Thread Discharge)

Hale Model #545-4091-08-0 (ISO Thread Discharge)

Pump Operation

1. **Important:** Fill crankcase with oil (*There is no oil in the crankcase when you receive the pump*).

Approx. 1.5 quarts/1.4 liters (verify oil level with the oil dipstick)

- Summer: use SAE 30 Oil.
- Winter (under 40°F or 4°C): use SAE 5W-20 Oil.

2. **Fill gas tank.** Briggs & Stratton recommends using a lead-free gasoline (minimum of 85 octane). Allow 1/4" or 6 mm of tank space for fuel expansion.

3. **To Start Engine**

A. Open fuel line valve. Turn fuel line valve to "ON" position. It is located above the throttle control.

B. Move throttle control to "**FAST**" position. The throttle control is located on the side of the engine. Move the throttle lever to the full right position.

C. Grasp rope handle and pull slowly until resistance is felt. Then pull cord rapidly to overcome compression, prevent kickback and start engine. Repeat if necessary.

D. After engine is warmed up, adjust throttle as needed FAST or SLOW.

NOTE: Minor adjustments to the carburetor and governor may be necessary to get pump running to specs.

Please refer to Briggs & Stratton engine Owner's Manual which was enclosed with this document.

4. **Place pump in water and start for fastest prime.**

A. Pump may fail to prime properly if started in fast idle position on shore first.

5. **To Stop Engine**

A. Move throttle control to "**SLOW**" position (throttle lever to full left position)

Operating Notes:

- **Do not submerge the muffler in water.** May cause damage to the engine.
- **Use a 3" dia. discharge hose.** Chief pumps are low pressure/high volume. Anything less than 3" dia. will restrict flow and reduce GPM output.

ENGINE MAINTENANCE

CAUTION: Always remove spark plug first. (This prevents accidental starting during servicing.)

| <u>MAINTENANCE SCHEDULE</u> | |
|---------------------------------|--|
| TIME | ACTION |
| After first 5 hours | •Change Oil |
| After every 5 hours | •Check Oil Level •Remove dirt & debris from air cleaner with a cloth or brush. Cleaning with a forceful spray is not recommended as water can contaminate the fuel system |
| Every 25 hours/3 months | •Clean air cleaner filter |
| Every 50 hours/ Each season: | • Change oil |
| Every 100 hours/yearly | • Remove blower housing & clear debris from cooling system. • Spark plug - clean & reset gap at .03" • Replace IN-LINE fuel filter. |

Change Oil: Drain oil from bottom of the engine. Change oil while engine is warm, after first 5 hours & every 50 hours/season thereafter. Change every 25 hours if operated under heavy load, or in high ambient temperatures.

Clean air cleaner filter:

(Every 25 hours/3 months)

1. Lift handle on air cleaner cover and remove.
2. Clean or replace air cleaner filter as necessary.
3. Reinstall air cleaner filter. Reinstall air cleaner cover and secure into place with the handle.

SALT WATER MAINTENANCE

Otterbine floating pumps may be used in salt water applications providing the pump is immediately flushed with fresh water after use for **7-10 minutes at full throttle**. The exterior hardware must be rinsed and wiped dry.

STORAGE INSTRUCTIONS

If the Otterbine pump is to be stored for 30+ days, do the following:

1. To prevent dirt or gum deposits in the fuel system, drain engine of fuel. Run the engine until it stops from lack of fuel.
2. Float assembly should be removed for easier maintenance. To remove the float assembly, disengage the hold-down straps (see parts breakdown pages 8 - 10) and lift engine/pump assembly up and away from the float.
3. While engine is still warm, drain oil from crankcase. Refill with oil.
4. Remove spark plug. Pour approximately .5 ounce/15ml of engine oil into cylinder and crank slowly to distribute oil. Replace spark plug.
5. Clean dirt and chaff from cylinder, blower housing, rotating screen, and muffler area.
6. Store the pump in a clean and dry area.

Important Warnings and Safeguards

WARNING:

Do Not Touch Hot Muffler: Contact may cause burns.

CAUTION:

Do Not Submerge Engine and/or Muffler: This may allow water to enter to engine and damage the pump.

CAUTION:

Do Not Fill Fuel Tank While The Engine is Hot: Potential fire Hazard.

WARNING:

Engine Exhaust From This Product Contains Chemicals Known, In Certain Quantities, To Cause; cancer, birth defects, or other reproductive harm.

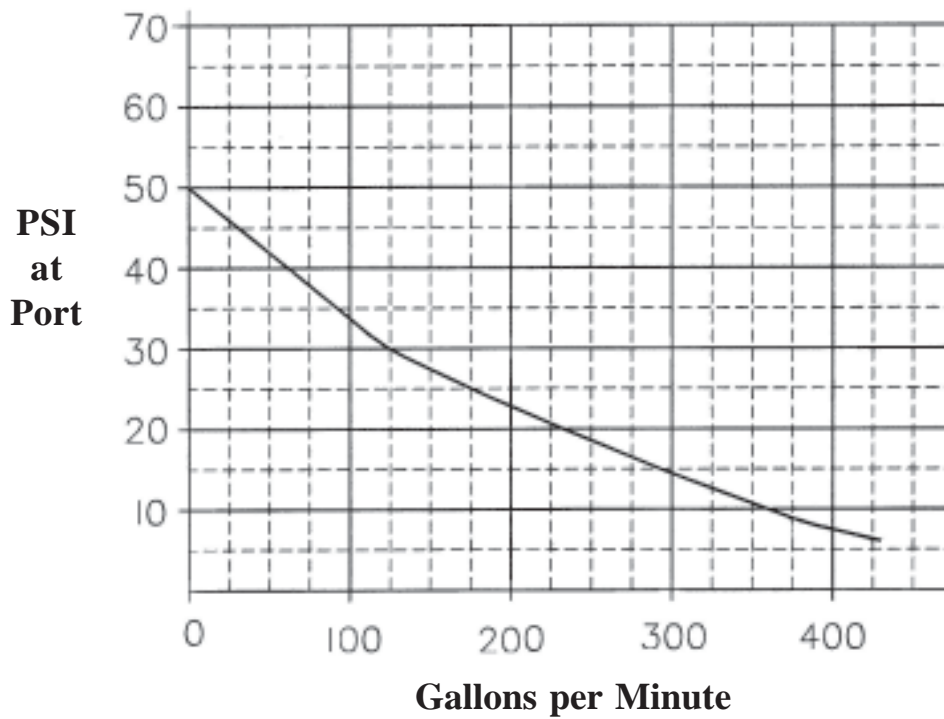
TROUBLESHOOTING

| Symptom | Systematic order of Repair |
|--|--|
| Pump will not prime: | <ul style="list-style-type: none"> a. Check the weep hole in the endcap. It must be kept clear. b. Check that hose is not kinked c. Hose may have some flat, compressed areas. Squeeze these areas to open the hose and alleviate back pressure. |
| Unit will not pump properly: | <ul style="list-style-type: none"> a. Check the weep hole in the endcap. It must be kept clear. b. Check the intake for debris. c. Check oil; if there is water in the oil, change it. d. Using hose smaller than 2.5" (63mm) diameter will reduce output. Verify hose diameter. e. If starting pump on shore, make sure idle is set low when placed in water. f. If pump does not prime while starting on shore, place pump in water prior to starting engine. g. Check engine speed. Throttle should be fully open. Engine speed should be 3600 rpm at no load. |
| Pump will not start: | <ul style="list-style-type: none"> a. Check spark plug wire. b. Check gas level and fuel line valve is open. |
| Too much oil or grey colored oil: | <ul style="list-style-type: none"> a. Drain oil. Refill and run engine for about 5 min. Drain oil and refill. Continue procedure until oil is no longer discolored. b. Next time pump is operated, check oil for greyish color, if this persists, take pump to an authorized Briggs & Stratton repair center to have engine seal changed. |
| Pump no longer achieves manufactureres performance spec.s | <ul style="list-style-type: none"> a. Remove discharge flanges and or end plug. Remove bottom housing bolts and seperate bottom housing from top housing. (you will need to pry apart silicone seal) b. Inspect impeller, bottom and top housing for wear or damage. Replace as needed. Note: Be sure to inspect top housing if impeller has significant wear. |

Chief 11.5HP Pump Specifications

| | |
|------------------------------|--|
| UNIT SIZE | 30" x 30" x 23" (76cm x 76cm x 58.5cm) |
| Shipping Weight | In box fully assembled: 131 lbs (59.4 Kilograms) |
| Net Weight | 118 lbs (53.5 Kilograms) Pump: 86 lbs (39.0 Kilograms) Float: 32 lbs (14.5 Kilograms) |
| Engine Capacities | Gas tank 3 Quarts / 2.8 Liters Oil 1.5 Quarts / 1.4 Liters |
| Engine Specifications | Briggs & Stratton Intek Series 11.5HP, 3600 RPM @ no load 21 cubic inch / 344 cc Singlecylinder Overhead Valve (OHV) Design Advanced Anti-Vibration System (AVS™) |
| Pump Body | .5" / 1.2cm cast aluminum alloy. Built-in suction guard and skids |
| Discharge | 2.5" NST male / ISO 228/1-G21/2A Parallel Pipe 3" / 8mm hose diameter recommended for full output. 2.5" / 6.5mm minimum. |
| Float | High density polyethylene shell filled with closed-cell polyurethane foam. |
| Pump Performance | Chief - 1 Discharge (See Page 7 for Pump Curve) Max head pressure 50 psi (3.4 Bars) Max. head 115 feet (35 meters) Max. output 425 GPM (1609 LPM) @ 7 psi |
| Lubricant and Fuel | Above 40°F / 4°C SAE 30 Below 40°F / 4°C SAE 5W-30, 10W-30 Lead-free, minimum of 85 Octane Note: Use detergent oil classified for service, SC, SC, SE, SF, SG. |

Chief 11.5HP Pump Curve



Optional Accesories

| # | Description | Part # |
|---|---|------------|
| 1 | Intake screen for stopping small debris: 1/8" dia. openings in screen | 12-0025 |
| 2 | 25', (7.62 m), Hose assembly | F-203-H25 |
| 3 | 50', (15.24 m), Hose assembly | F-203-H50 |
| 4 | 100', (30.48 m), Hose assembly | F-203-H100 |
| 5 | 2.5" NST x 3" NPSH Adaptor | 46-0021 |

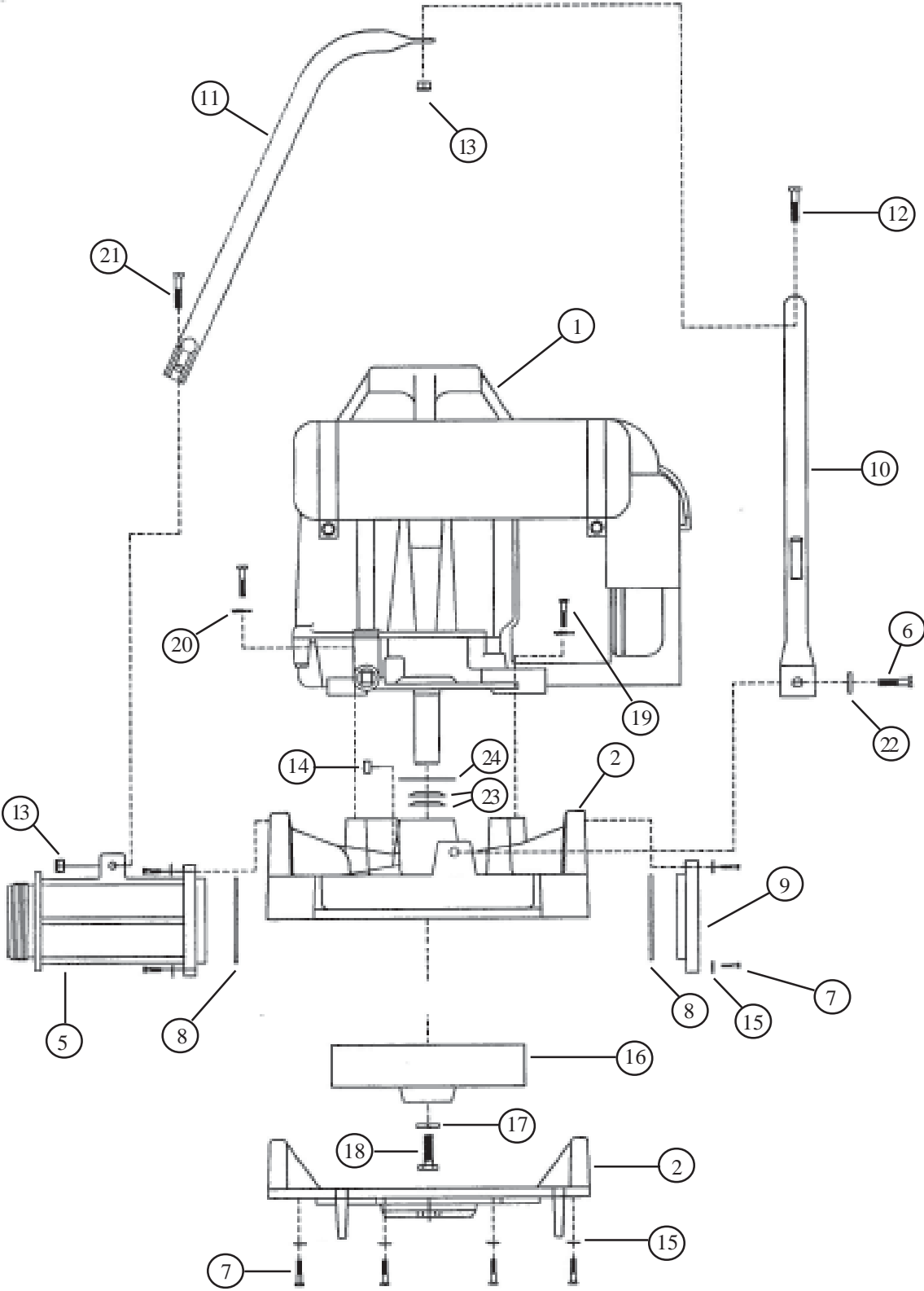
Standard engine has a one (1) year limited warranty on entire engine.

See back page for Briggs & Stratton warranties

OTTERBINE® CHIEF 11.5HP PORTABLE FLOATING PUMP
REPLACEMENT PARTS LIST

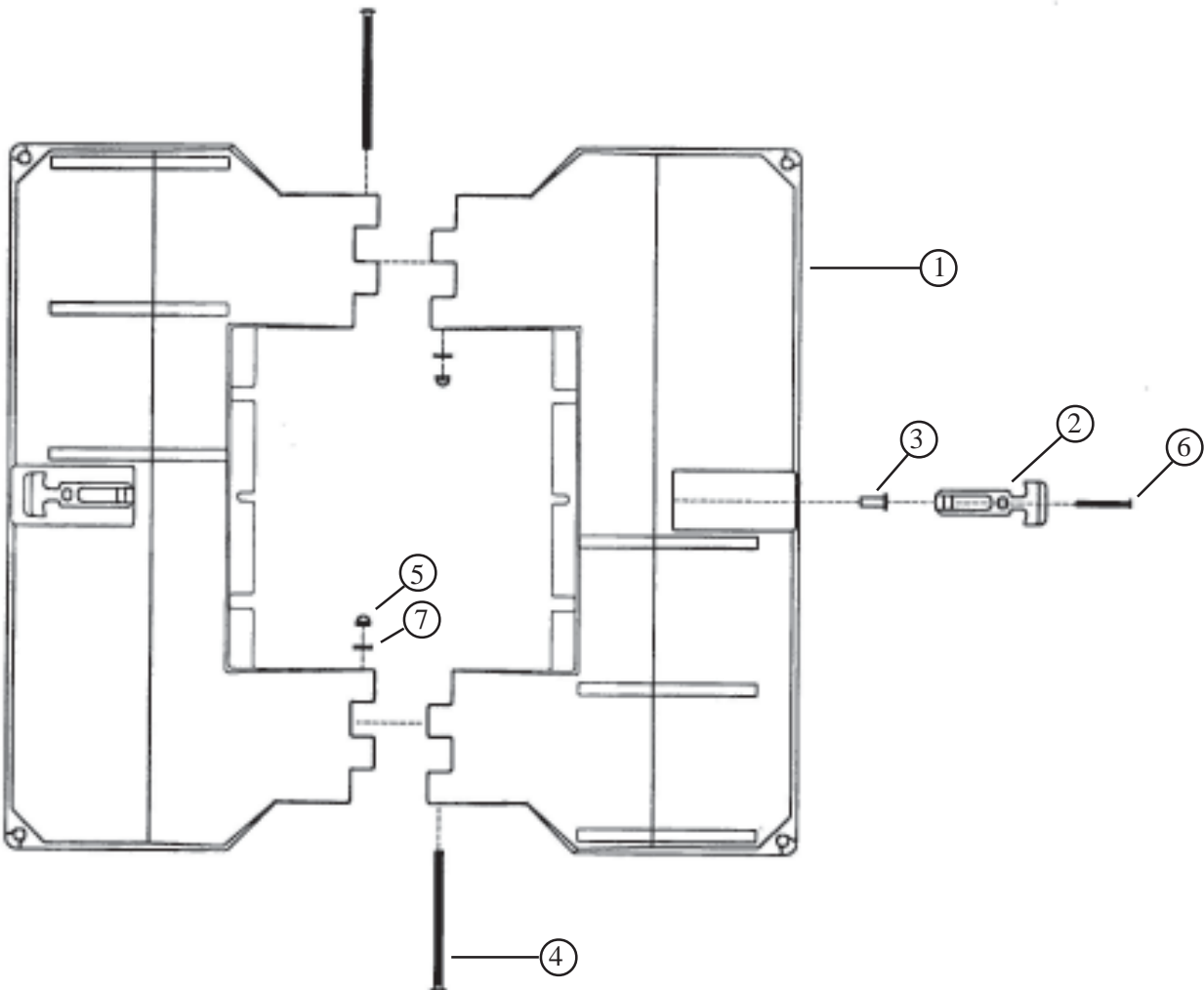
| DIAGRAM NUMBER | PART DESCRIPTION | QTY | OTTERBINE PART NUMBER |
|-----------------------|---|------------|------------------------------|
| 1 | Engine, Briggs & Stratton, 11.5HP | 1 | 30-0026-011 |
| 2 | Lower & Upper Housing Assembly | 1 | 10-0077 |
| 5 | Discharge Flange | 1 | 41-0009 |
| 6 | Hex Bolt, S/S, 5/16"-18 x 1" | 2 | MP2008 |
| 7 | Hex Bolt, S/S, 1/4"-20 x 1" | 16 | EP5100 |
| 8 | Discharge/Plug Gasket | 2 | EP2503 |
| 9 | End Cap/Plug | 1 | 41-0010-001 |
| 10 | Handle, (with keepers) | 1 | 60-0009 |
| 11 | Handle Brace | 1 | 60-0010 |
| 12 | Hex Bolt, S/S, 1/4"-20 x 1.25" | 1 | 101-001 |
| 13 | Nylon Lock Nut, S/S, 1/4"-20 | 2 | C2-112 |
| 14 | Square Nut, S/S, 5/16"-18 | 2 | 26-0002 |
| 15 | Internal Star Washer, S/S, 1/4" | 16 | 927-001 |
| 16 | Impeller, 10.5HP High Volume | 1 | 41-0135 |
| 17 | Lock Washer, S/S, 7/16" | 1 | EP6401 |
| 18 | Hex Bolt, S/S, 7/16"-20 x 1.5" | 1 | 22-0030 |
| 19 | Hex Bolt, Plated, 5/16"-18 x 1.25" | 4 | EP5001 |
| 20 | Internal Star Washer, S/S, 5/16" | 4 | 927-005 |
| 21 | Hex Bolt, S/S, 1/4"-20 x 7/8" | 1 | 101-016 |
| 22 | Fender Washer, S/S, 5/16" | 2 | 28-0008 |
| 23 | Lip Seal, Self-Adjusting | 2 | 49-0025 |
| 24 | Engine Gasket | 1 | 49-0029 |
| 25 | Silicone Grease (not shown) - applied between lip seals | --- | 48-0014 |
| | | | |
| | | | |
| | | | |

Chief 11.5HP Parts Breakdown Pumping Assembly



Chief Parts Breakdown
Float Assembly (P/N 01-0002-002)

| Item Number | Description | Qty | Part Number |
|-------------|---|-----|-------------|
| 1 | Float, 2 sections | 2 | 42-0035 |
| 2 | Flex Draw Latch | 2 | 46-0015 |
| 3 | Well Nut, 10 - 32 | 4 | 21-0010 |
| 4 | Carriage Bolt, S/S, 5/16" - 18 x 5 3/4" | 2 | 22-0008 |
| 5 | Cap Nut, Brass, 5/16" - 18 | 2 | BP2811 |
| 6 | Phillips Screw, S/S, 10 - 32 x 3/4" | 4 | 24-0003 |
| 7 | Flat Washer, S/S, 5/16" | 2 | 28-0018 |



BRIGGS & STRATTON ENGINE OWNER WARRANTY POLICY
effective July 1, 2001

Replaces all undated Warranties and all Warranties
dated before July 1, 2001

LIMITED WARRANTY

Briggs & Stratton Corporation will repair or replace, free of charge, any part, or parts of the engine that are defective in material or workmanship or both. Transportation charges on parts submitted for repair or replacement under this Warranty must be borne by purchaser. This warranty is effective for the time periods and subject to the conditions stated herein. For warranty service, find the nearest Authorized Service Dealer in our dealer locator map at www.briggsandstratton.com or as listed in the "Yellow Pages"™ under "Engines, Gasoline," "Gasoline Engines," "Lawn Mowers" or similar category.

THERE IS NO OTHER EXPRESS WARRANTY. IMPLIED WARRANTIES, INCLUDING THOSE OF MERCHANTABILITY AND FITNESS FOR A PARTICULAR PURPOSE, ARE LIMITED TO ONE YEAR FROM PURCHASE, OR TO THE EXTENT PERMITTED BY LAW ANY AND ALL IMPLIED WARRANTIES ARE EXCLUDED. LIABILITY FOR CONSEQUENTIAL DAMAGES UNDER ANY AND ALL WARRANTIES ARE EXCLUDED TO THE EXTENT EXCLUSION IS PERMITTED BY LAW. Some countries or states do not allow limitations on how long an implied warranty lasts, and some countries or states do not allow the exclusion or limitation of incidental or consequential damages, so the above limitation and exclusion may not apply to you. This warranty gives you specific legal rights and you may also have other rights which vary from country to country and state to state.

WARRANTY PERIOD*

| PRODUCTS | WITHIN U.S.A. AND CANADA | | OUTSIDE U.S.A. AND CANADA | |
|---|--------------------------|----------------|---------------------------|----------------|
| | CONSUMER USE | COMMERCIAL USE | CONSUMER USE | COMMERCIAL USE |
| Vanguard™ engines. | 2 years | | | |
| Diamond Plus®, Industrial Plus™, VC®, ELS™ and Sleeve Bore Intek™ engines | 2 years | 1 year | 2 years | 1 year |
| Quantum®, Diamond Power®, Power Built™ OHV and Kool Bore Intek™ engines | 2 years | 90 days | 2 years | 90 days |
| Standard engines installed on lawn mowers, riders, edgers, chippers, shredders, string trimmers, tillers and Sno/Gard engines | 2 years | 90 days | 1 year | 90 days |
| Classic™ engines and all other standard engines and products | 1 year | 90 days | 1 year | 90 days |
| Etek™ electric motors | 1 year | | | |

Note the following special warranty periods: 5 years for consumer use, 90 days for commercial use of Touch-N-Mow™ starter on Quantum® and Intek™ engines; 2 years for emission control systems on engines certified by EPA and CARB; 1 year for consumer use of all engines and products in India, commercial use of Vanguard™ engines in India, and consumer use of Quantum Diamond Power® and Kool Bore Intek™ engines in Australia, New Zealand, the Middle East, and Africa.

The warranty period begins on the date of purchase by the first retail consumer or commercial end user, and continues for the period of time stated in the table above. "Consumer use" means personal residential household use by a retail consumer. "Commercial use" means all other uses, including use for commercial, income producing or rental purposes. Once an engine has experienced commercial use, it shall thereafter be considered as a commercial use engine for purposes of this warranty. *Engines used in competitive racing or on commercial or rental tracks are not warranted.*

NO WARRANTY REGISTRATION IS NECESSARY TO OBTAIN WARRANTY ON BRIGGS & STRATTON PRODUCTS. SAVE YOUR PROOF OF PURCHASE RECEIPT. IF YOU DO NOT PROVIDE PROOF OF THE INITIAL PURCHASE DATE AT THE TIME WARRANTY SERVICE IS REQUESTED, THE MANUFACTURING DATE OF THE PRODUCT WILL BE USED TO DETERMINE THE WARRANTY PERIOD.

NOTE: This is a reprint of Briggs & Stratton Corporation printed warranty. The engine installed on this pump is warranted by Briggs & Stratton Corporation.

OTTERBINE® PORTABLE PUMP LIMITED ONE YEAR WARRANTY

Otterbine Portable Pump Serial # _____

Please note that this limited one year warranty applies to all components of the OTTERBINE PORTABLE PUMP except for the gasoline engine, which is warranted separately and exclusively by the manufacturer, Briggs & Stratton Company. See accompanying warranty information provided by Briggs & Stratton.

WARRANTY: BAREBO, INC. located at 3840 Main Road East, Emmaus, PA 18049 USA, hereby warrants, subject to the conditions hereinbelow set forth, that should this OTTERBINE PORTABLE PUMP prove defective by reason of improper workmanship or materials at any time during one (1) year of date of delivery to the Purchaser at retail only that BAREBO will repair or replace the said OTTERBINE PORTABLE PUMP as may be necessary to restore it to satisfactory operating condition, without any charge for materials or labor necessarily incident to such repair or replacement, provided that:

(a) The enclosed Warranty Registration Card must be mailed to BAREBO within fifteen (15) days of original receipt by the Purchaser at retail.

(b) The OTTERBINE PORTABLE PUMP must be delivered or shipped, prepaid, in its original container or a container offering an equal degree of protection, to BAREBO or a facility authorized by BAREBO to render the said repair or replacement services, or, if purchased from an authorized OTTERBINE dealer, to such dealer:

(c) The OTTERBINE PORTABLE PUMP must not have been altered, repaired, or serviced, by anyone other than BAREBO, a service facility authorized by BAREBO to render such service, or by an authorized OTTERBINE dealer, and the serial number of the OTTERBINE PORTABLE PUMP must not have been removed or altered; and

(d) The OTTERBINE PORTABLE PUMP must not have been subjected to lightning strikes, vandalism, freezing-in, accident, misuse or abuse, and also installed, operated, and maintained in accordance with guidelines in the Owner's Manual shipped with this OTTERBINE PORTABLE PUMP.

No implied warranties of any kind by BAREBO in connection with this OTTERBINE PORTABLE PUMP and no other warranties, whether expressed or implied, including implied warranties of merchantability and fitness for a particular purpose, shall apply to this OTTERBINE PORTABLE PUMP.

Should this OTTERBINE PORTABLE PUMP prove defective in workmanship or material, the retail Purchaser's sole remedy shall be repair or replacement as is hereinabove expressly provided and, under no circumstances, shall BAREBO be liable for any loss, damage or injury, direct or consequential, arising out of the use of, or inability to use, this OTTERBINE PORTABLE PUMP, including but not limited to retail Purchaser's cost, loss of profits, goodwill, damages due to loss of product or interruption of service, or personal injuries to Purchaser or any person.