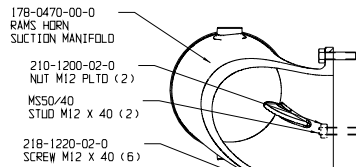
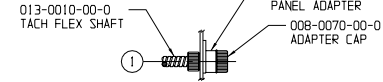
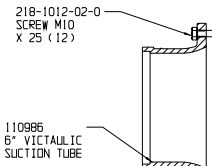


PUMP SHIFT INDICATOR LIGHTS  
FOR WIRING SCHEMATIC SEE PLATE NO. 746

RAMS HORN SUCTION OPTION



VIC SUCTION OPTION



1/10 RATIO  
SPEED COUNTER ATTACHMENT  
SEE PLATE 910 FOR FURTHER DETAIL

PUMP MODEL	GEAR RATIO
SMD*-19X & SMM*-1969X	1.96
SMD*-21X & SMM*-211X	2.13
SMD*-23X & SMM*-233X	2.32

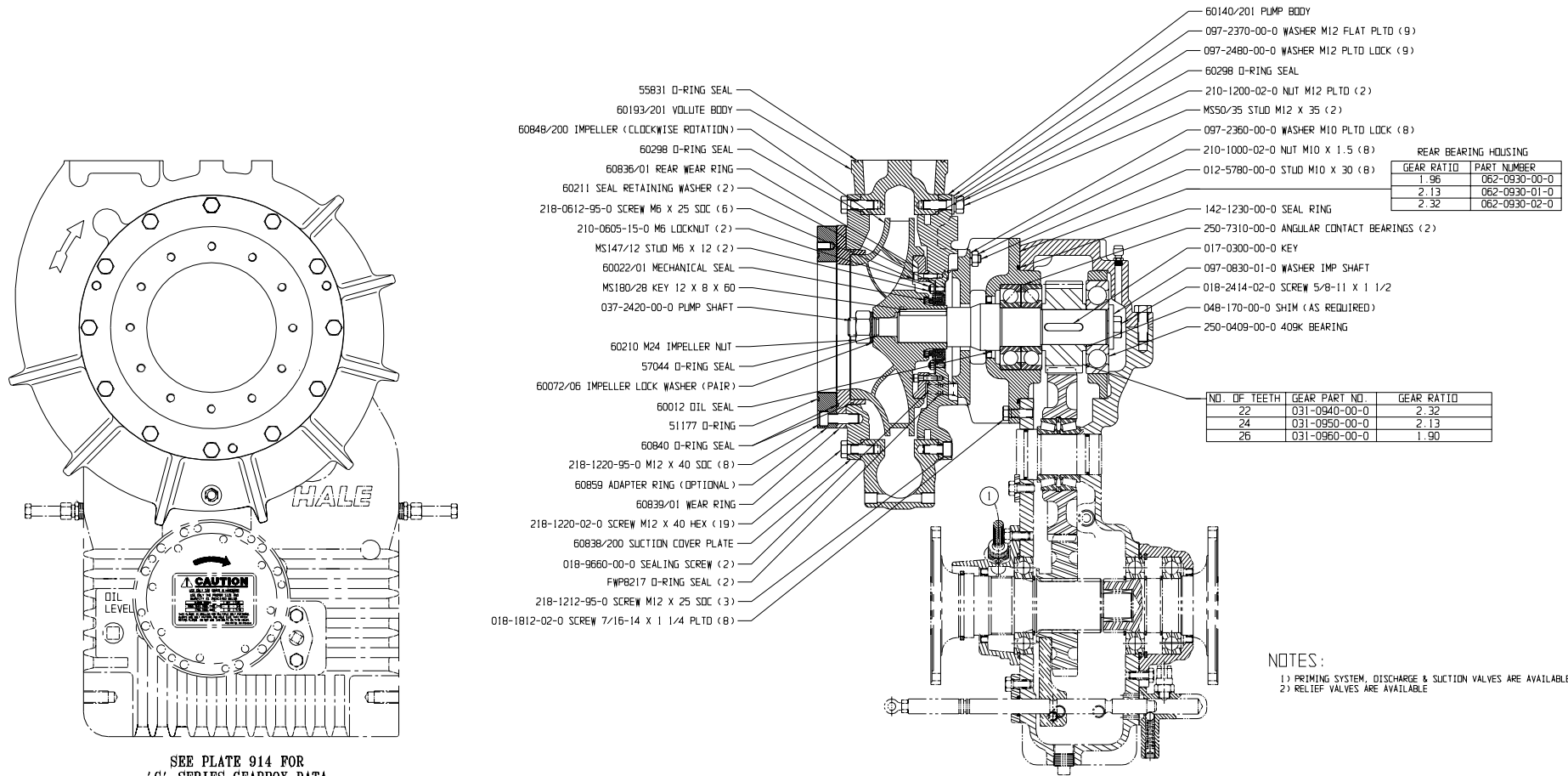
THE HAILE TYPE SMD PUMP IS AVAILABLE IN 1250 & 1500 GPM NFPA RATINGS. THE COMPLETE PUMP MODEL NUMBER IS FORMED AS FOLLOWS:  
FOR EXAMPLE, A SMD PUMP IS REQUIRED TO HAVE SMD 125-23 X  
A 1250 GPM RATING WITH A 2.32 GEAR RATIO. PUMP RATED PUMP GEARBOX  
THE PUMP MODEL NUMBER WOULD BE AS SHOWN. MODEL CAPACITY RATIO TYPE

WARNING

EXCEEDING THESE LIMITS OR FAILURE TO FOLLOW THE RECOMMENDATIONS  
OUTLINED ON THIS DRAWING COULD DAMAGE THE PUMP AND RESULT IN  
PERSONAL INJURY.

SMD PUMP MAXIMUM HYDROSTATIC PUMP PRESSURE = 600 PSIG  
SMD PUMP MAXIMUM HYDRODYNAMIC PUMP PRESSURE = 400 PSIG  
MAXIMUM POWER INPUT FOR PUMPING = 450 HP  
MAXIMUM TORQUE ON PUMP SHAFT = 2300 LBS-FT  
MAXIMUM GEARBOX SHAFT TORQUE (READ) = 16,000 LBS-FT

GEAR RATIO	MAX GEARBOX INPUT RPM
2.32	2960
2.13	2960
1.90	3060



REAR BEARING HOUSING

GEAR RATIO	PART NUMBER
1.96	062-0930-00-0
2.13	062-0930-01-0
2.32	062-0930-02-0

NO. OF TEETH	GEAR PART NO.	GEAR RATIO
22	031-0940-00-0	2.32
24	031-0950-00-0	2.13
26	031-0960-00-0	1.90

NOTES:  
1) PRIMING SYSTEM, DISCHARGE & SUCTION VALVES ARE AVAILABLE.  
2) RELIEF VALVES ARE AVAILABLE.

SEE PLATE 914 FOR  
'G' SERIES GEARBOX DATA

HAILE SMD-X SERIES PUMP  
SMM-X

PLATE NO. 1042AB

04-1701 A	RELEASE	DN	7/15/04	MAL	
0038 B	EDITED PAX AND QUANTITIES	MAB	2/23/05	MAL	
ECD	NO REV	CHANGED FROM	BY	DATE	APVD

HAILE PRODUCTS, INC.  
A Unit of IDEX Corporation  
Conshohocken, PA 19428 USA

DATE 7-15-04  
SCALE: