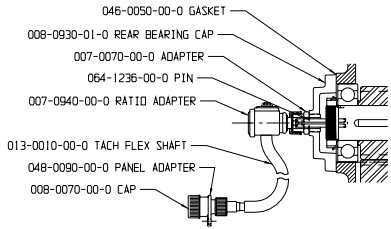
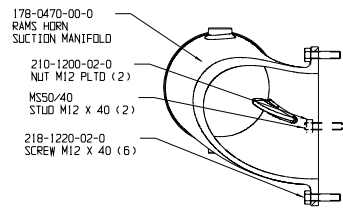


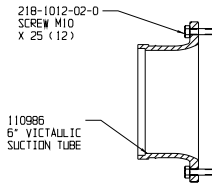
TACHOMETER OPTION



RAMS HORN SUCTION OPTION

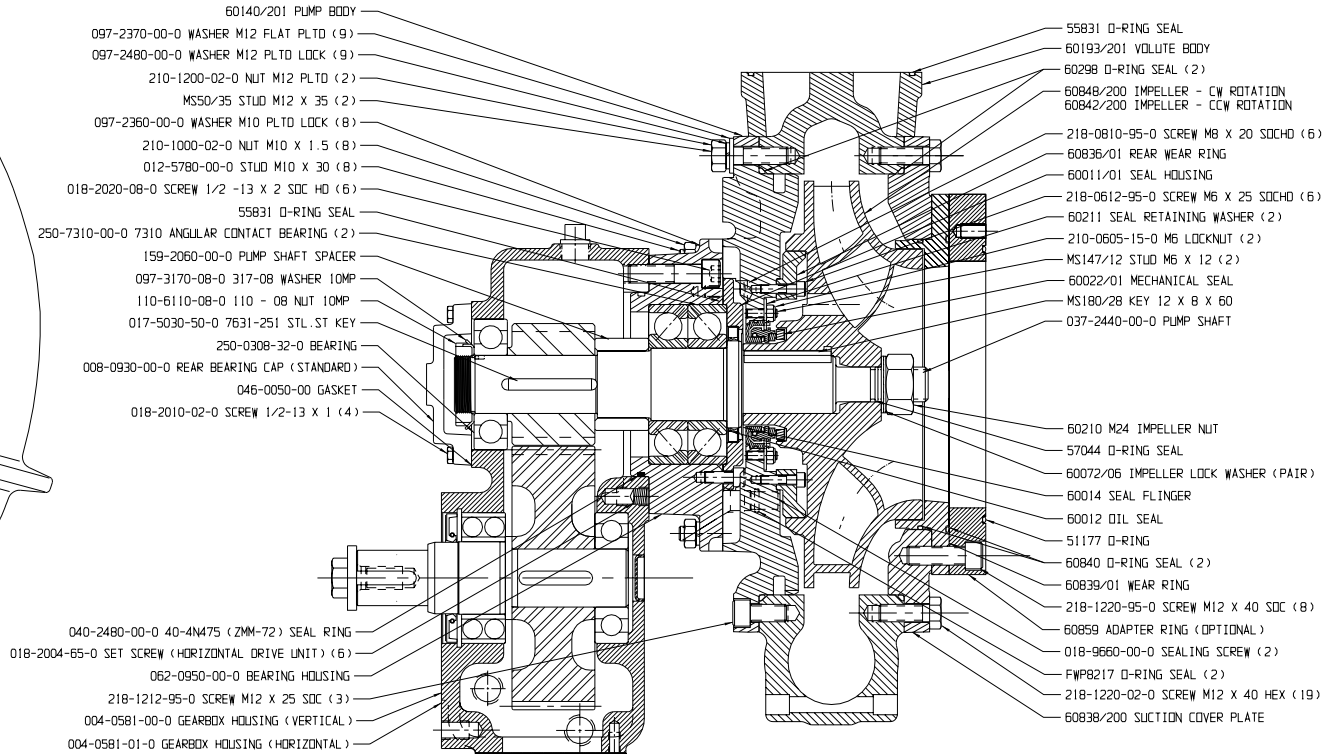
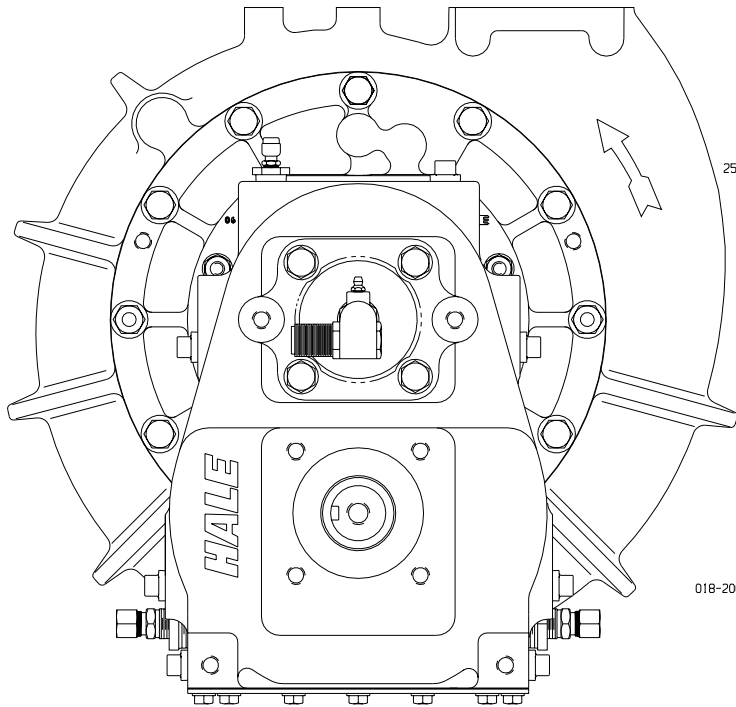


VIC SUCTION OPTION



NOTES:

- 1) TO CONFORM TO NFPA 1902, APPARATUS MANUFACTURER MUST INSTALL (4) SHIFT AND THROTTLE CONTROL WARNING LIGHTS. THE INDICATOR LIGHTS ARE FURNISHED WITH PTO AND HYDRAULIC DRIVEN PUMPS. SEE PLATE NO. 825AA.
- 2) THIS PRODUCT AND ITS COMPONENTS ARE PROTECTED BY ONE OR MORE OF THE FOLLOWING U.S. PATENTS AND OTHER PATENTS PENDING:  
 3,916,681      4,069,345      4,311,440      4,653,978

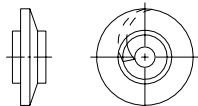
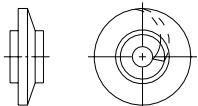


SEE PLATE EQ748A FOR 'HG' SERIES GEARBOX DATA

IMPELLER VANE ORIENTATION

ENGINE ROTATION PTO ROTATION IS CLOCKWISE WHEN FACING END OF GEARBOX INPUT SHAFT AND CLOCKWISE WHEN FACING SUCTION SIDE OF IMPELLER AS SHOWN

OPPOSITE ENGINE ROTATION PTO ROTATION IS COUNTERCLOCKWISE WHEN FACING END OF GEARBOX INPUT SHAFT AND COUNTERCLOCKWISE WHEN FACING SUCTION SIDE OF IMPELLER AS SHOWN



# HALE SMD-A SERIES PUMP

## PLATE NO. 1044AB

04-170	A	RELEASE	DW 7/15/04	MAL
0038	B	EDITED P/N AND QUANTITIES	MAB 2/23/05	MAL
ECD	REV	CHANGED FROM	BY	DATE
			APVD	



HALE PRODUCTS, INC.  
 A Unit of IDEX Corporation  
 Conshohocken, PA 19380 USA

DATE 7/15/04 SIZE F SCALE: