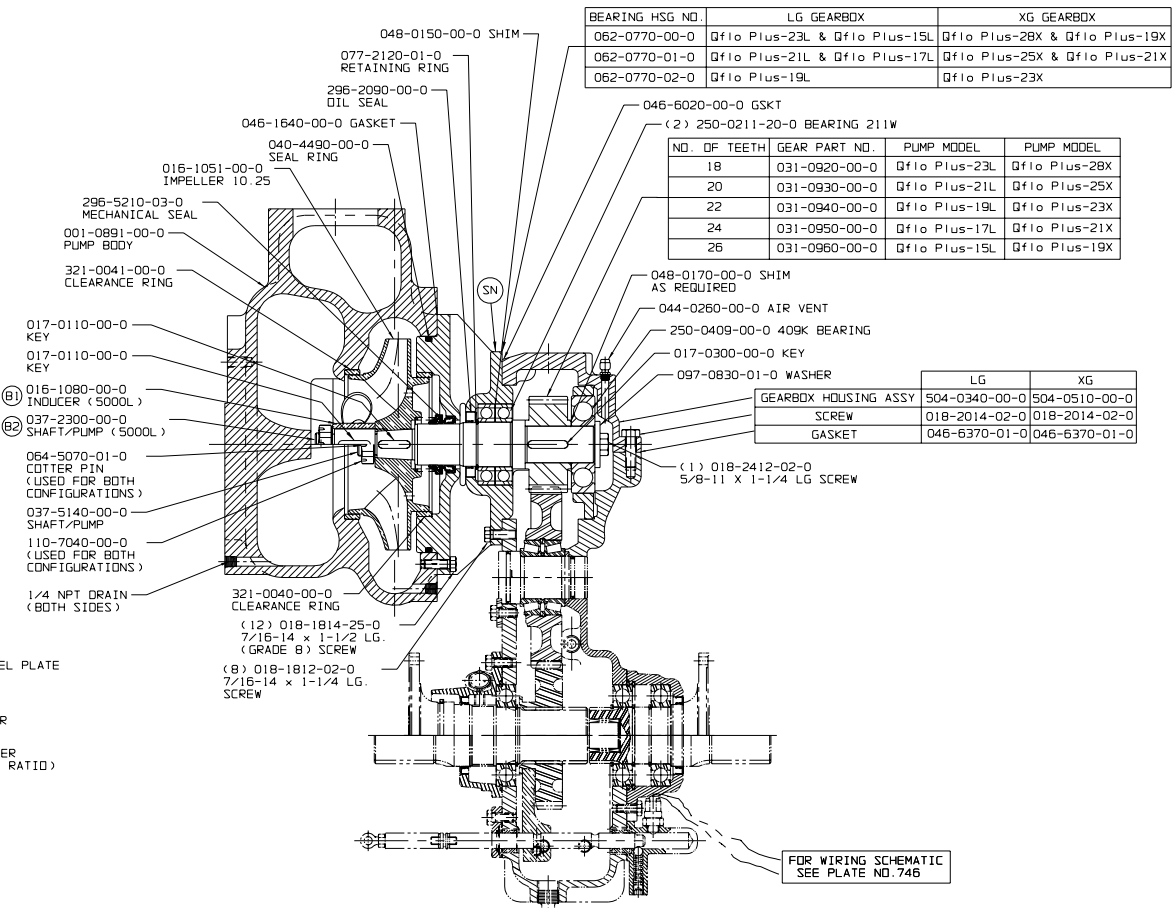
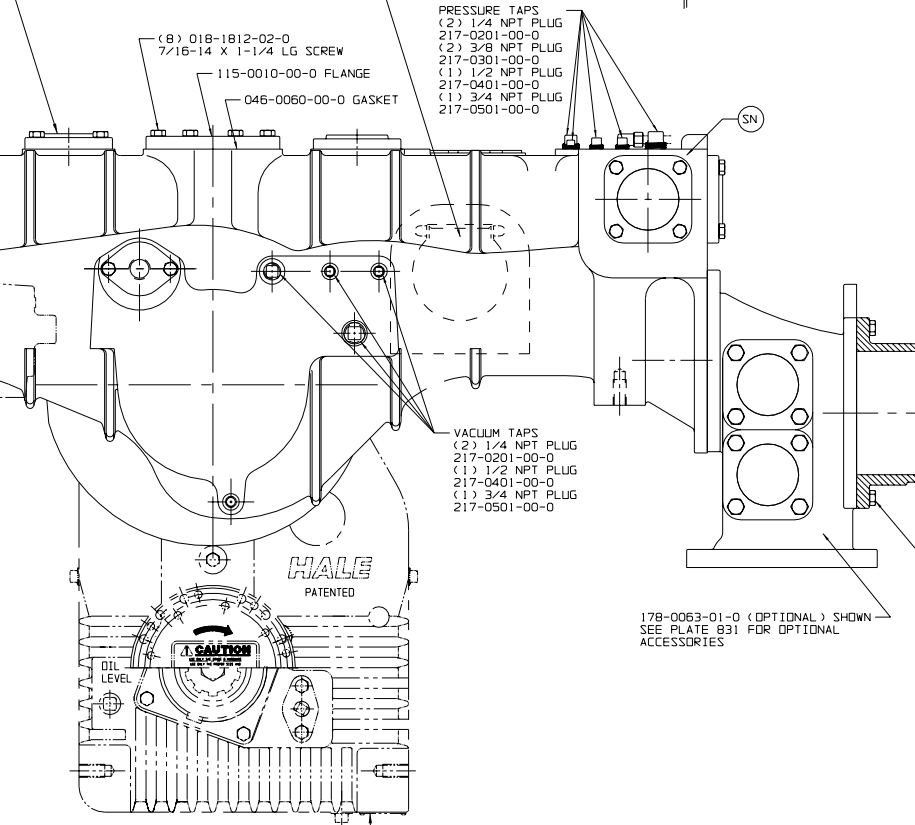
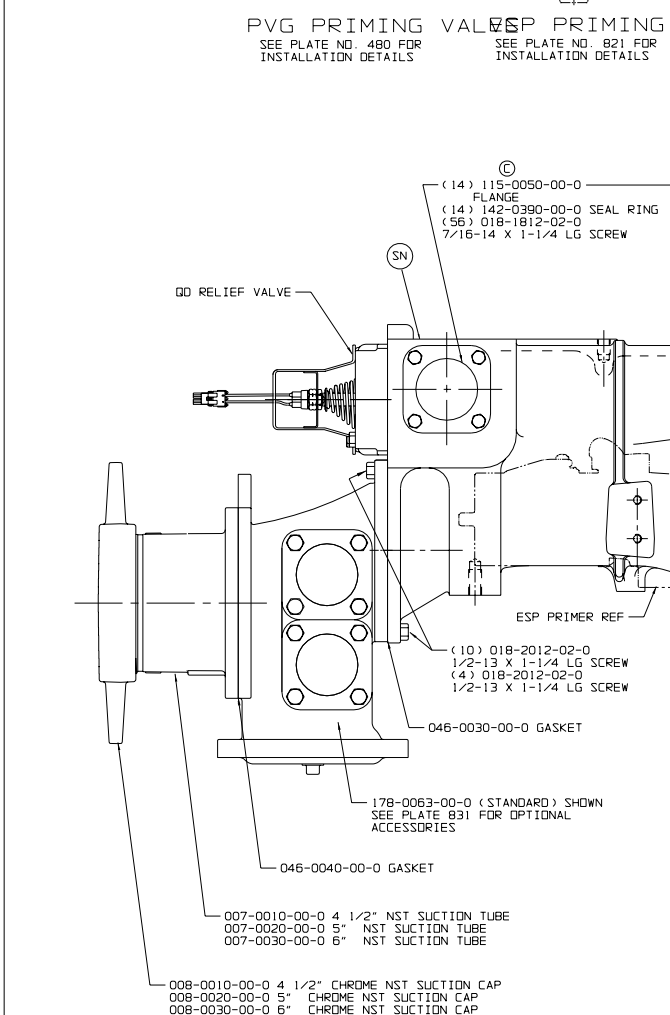
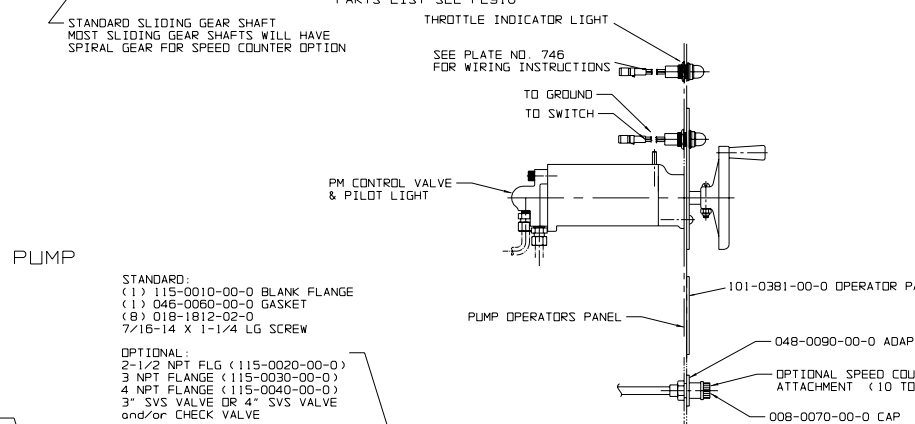
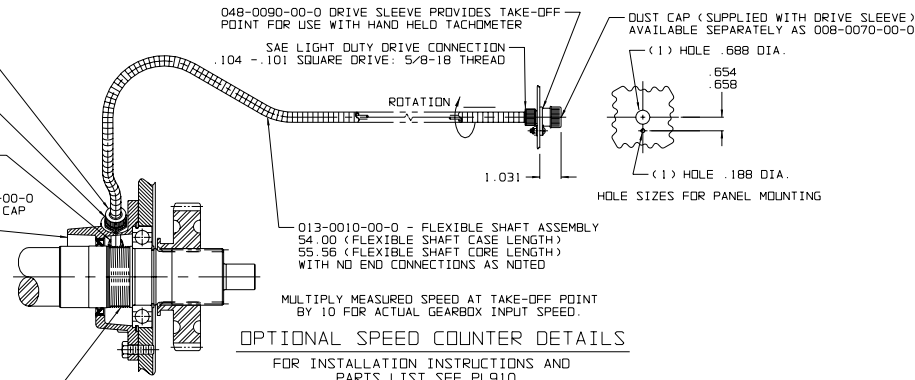
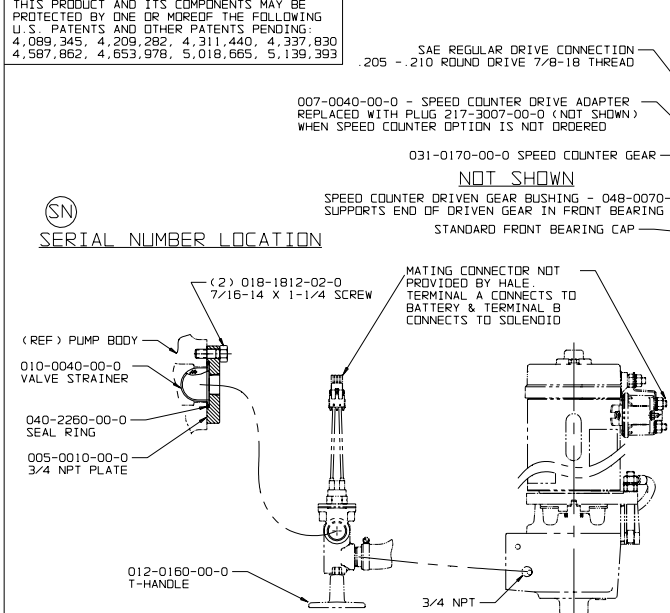
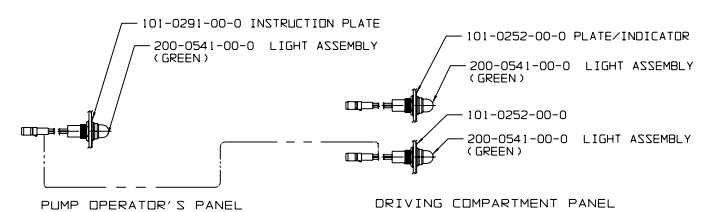


THIS PRODUCT AND ITS COMPONENTS MAY BE PROTECTED BY ONE OR MORE OF THE FOLLOWING U.S. PATENTS AND OTHER PATENTS PENDING: 4,089,345, 4,209,282, 4,311,440, 4,337,830, 4,587,862, 4,653,978, 5,018,665, 5,139,393

SN SERIAL NUMBER LOCATION



SEE PLATE NO. 914 FOR "G" SERIES GEARBOX



PUMP SHIFT INDICATOR LIGHTS

FOR WIRING SCHEMATIC SEE PLATE NO. 746

- NOTES:
- SEE LIMIT CHART, HALE DOCUMENT F-72 FOR MAXIMUM ALLOWABLE PUMP PRESSURE, ENGINE HORSEPOWER AND TORQUE LIMITS FOR HALE CENTRIFUGAL PUMPS.
 - APPLY LOCTITE # 246 HIGH TEMPERATURE THREAD LOCKER OR EQUIVALENT TO SCREW THREADS AND TORQUE SCREWS PER HALE ENGINEERING STANDARD ES018-002

HALE TYPE Qfio Plus SERIES PUMP WITH "G" SERIES GEARBOX

PLATE NO. 1053AC

Q176	C	WAS 13 FLANGES	ERB	08-08-05	MAL
Q4-246	B	ADDED B1 AND B2 FOR 5000L PUMP	FAS	12-13-04	MAL
Q4-256	A	RELEASE FOR PRODUCTION	FAS	10-15-04	MAL
ECD NO	REV	CHANGED FROM	BY	DATE	APVD



HALE PRODUCTS, INC.
A Unit of IDEX Corporation
Conshohocken, PA 19428 USA

DRAWN FAS DATE 10-15-04 SIZE D SCALE: .25