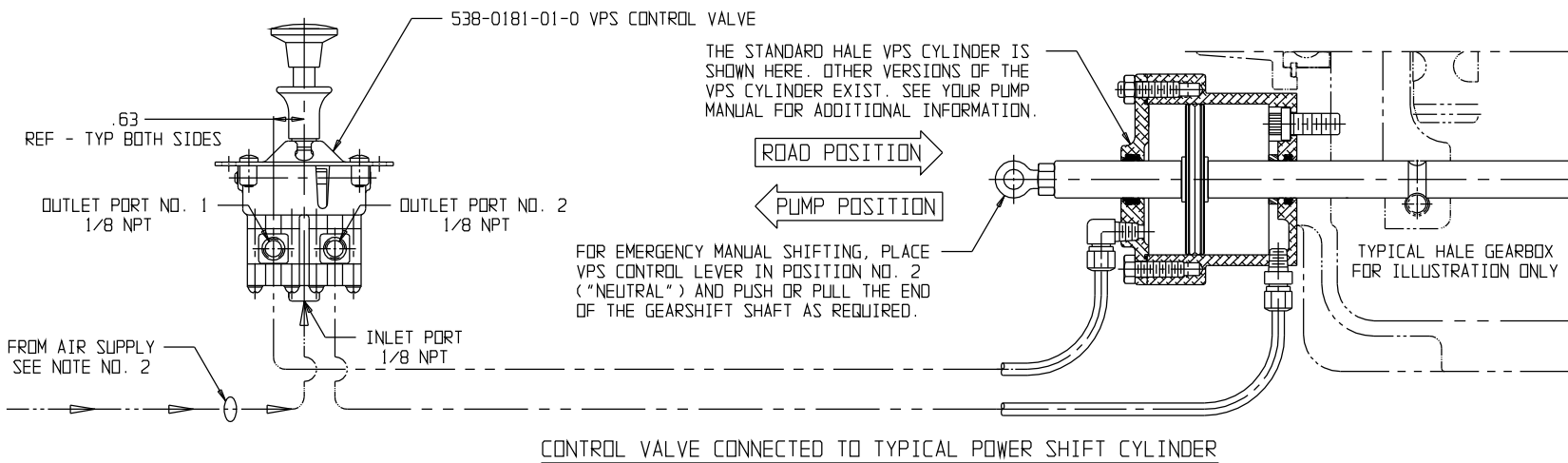


HALE VPS CONTROL VALVE ASSEMBLY

PART NO. 538-0180-00-0 - PLATE NO. 595CB

HALE PART NO.	QTY.	DESCRIPTION
538-0181-01-0	1	CONTROL VALVE
101-0072-00-0	1	INSTRUCTION PLATE
200-0540-00-0	1	LIGHT (GREEN)
018-1205-44-0	4	MACHINE SCREW - 1/4-20 X 5/8 LONG PHILLIPS ROUND-HEAD STAINLESS STEEL
110-1200-02-0	4	NUT - 1/4-20 ZINC PLATED STEEL HEX



CONTROL VALVE CONNECTED TO TYPICAL POWER SHIFT CYLINDER

NOTES:

- 1) TUBING FROM VPS CONTROL VALVE TO VPS CYLINDER IS PROVIDED BY THE INSTALLER. 1/4-INCH AIR BRAKE TUBING IS TYPICAL FOR MOST APPLICATIONS.
- 2) CONTROL VALVE IS RATED FOR 150 PSI MAXIMUM INLET PRESSURE. AIR MUST BE CLEAN AND DRY FOR PROPER AND RELIABLE OPERATION OF THE VPS SYSTEM. DO NOT USE FOR VACUUM APPLICATIONS.
- 3) CONTROL VALVE REQUIRES PERIODIC INSPECTION AND SERVICING. SEE HALE DRAWING NO. 101-0850-03-0 - MAINTENANCE AND REPAIR OF VPS CONTROL VALVE, FOR MORE INFORMATION.
- 4) FOR OPTIMUM PERFORMANCE AND SERVICE LIFE THE VPS CYLINDER SHOULD BE LUBRICATED APPROXIMATELY ONCE A YEAR. DISCONNECT BOTH AIR LINES AND ADD SEVERAL DROPS OF PNEUMATIC TOOL OIL, VACUUM CYLINDER OIL, OR SIMILAR LUBRICANT.

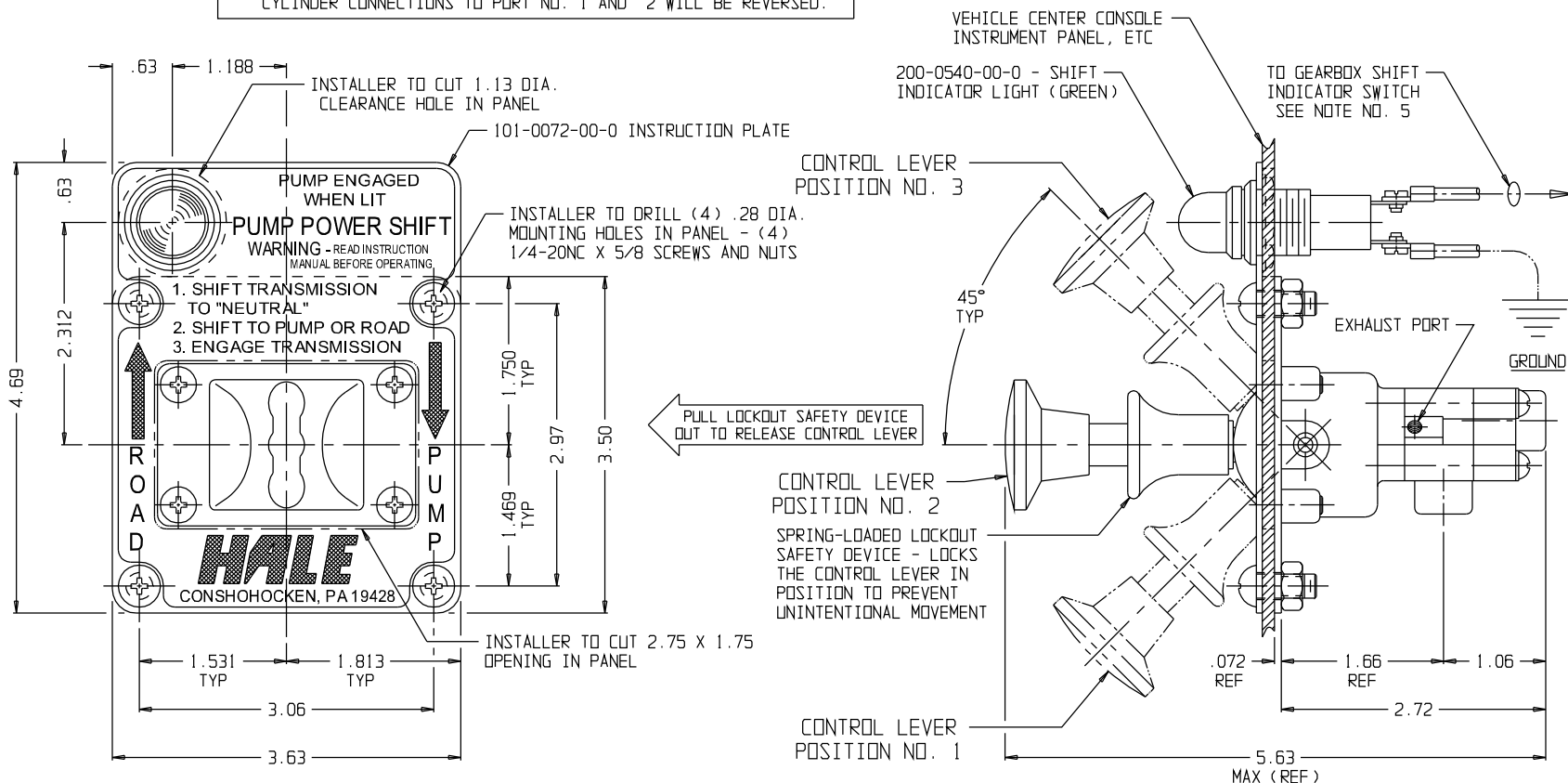
SEE HALE PLATE NO. 533C - HALE TYPE VPS POWER SHIFT, FOR THE PARTS LIST FOR THE STANDARD VPS CYLINDER. A CYLINDER REPAIR KIT IS AVAILABLE UNDER HALE PART NO. 546-0370-51-0.
- 5) SEE HALE PLATE 746A - WIRING SCHEMATIC FOR SHIFT INDICATOR LIGHTS, FOR MORE INFORMATION REGARDING THE SHIFT INDICATOR SWITCHES, LIGHTS, WIRING AND INSTALLATION.
- 6) VALVE CAN BE MOUNTED 180° FROM POSITION SHOWN, I.E. OUTLET PORTS FACING INDICATOR LIGHT, AS REQUIRED FOR INSTALLATION. CYLINDER CONNECTIONS TO PORT NO. 1 AND 2 WILL BE REVERSED.

⚠ WARNING ALL WIRING AND INSTALLATION DETAILS MUST CONFORM TO ALL APPLICABLE NFPA, SAE, AND DOT STANDARDS
VERIFY OPERATION OF PUMP ENGAGED INDICATOR LIGHTS AND ALL INTERLOCKS BEFORE PLACING APPARATUS IN SERVICE

OPERATION

- WITH CONTROL LEVER IN POSITION NO. 1
SUPPLY PRESSURE IS DIRECTED TO PORT NO. 2
PORT NO. 1 IS EXHAUSTED TO ATMOSPHERE
- WITH CONTROL LEVER IN POSITION NO. 2
SUPPLY PRESSURE IS CLOSED OFF ("NEUTRAL" POSITION)
PORTS NO. 1 AND 2 ARE BOTH EXHAUSTED TO ATMOSPHERE
- WITH CONTROL LEVER IN POSITION NO. 3
SUPPLY PRESSURE IS DIRECTED TO PORT NO. 1
PORT NO. 2 IS EXHAUSTED TO ATMOSPHERE

DO NOT USE THIS VALVE FOR VACUUM APPLICATIONS



CONTROL LEVER AND LOCKOUT SAFETY DEVICE NOT SHOWN IN THIS VIEW

PLATE NO. 595CB

ECO NO	REV	CHANGED FROM	BY	DATE	APVD
97-124	B	REDREW IN CAD FORMAT - ADDED "DO NOT USE THIS VALVE FOR VACUUM APPLICATIONS" NOTE	AJD	8-6-97	RET

HALE

HALE PRODUCTS, INC.
A Unit of IDEX Corporation
Conshohocken, PA 19428 USA

COPYRIGHT ©
NOT TO BE REPRODUCED OR USED TO
MAKE OTHER DRAWINGS OR MACHINERY.

DRAWN: AJD DATE: 8-6-97 DWG. SIZE: A
CHECKED: RET SCALE: 1/2=1 SHEET 1 OF 1