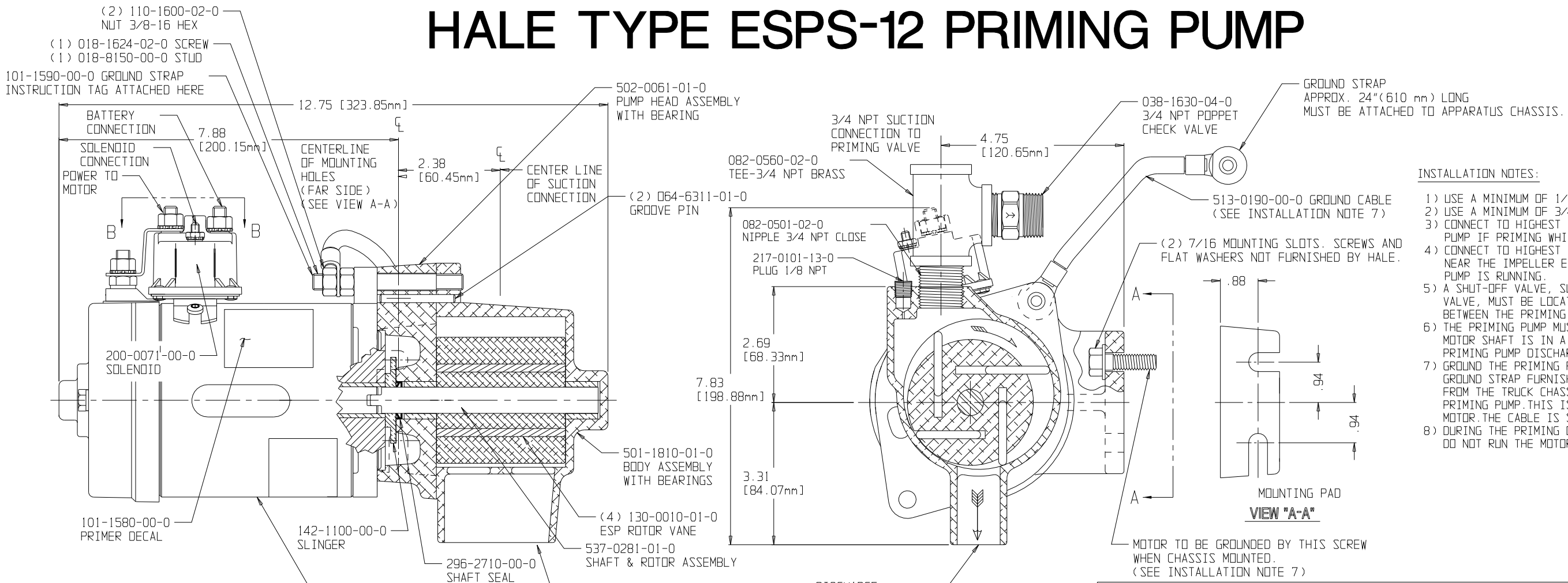


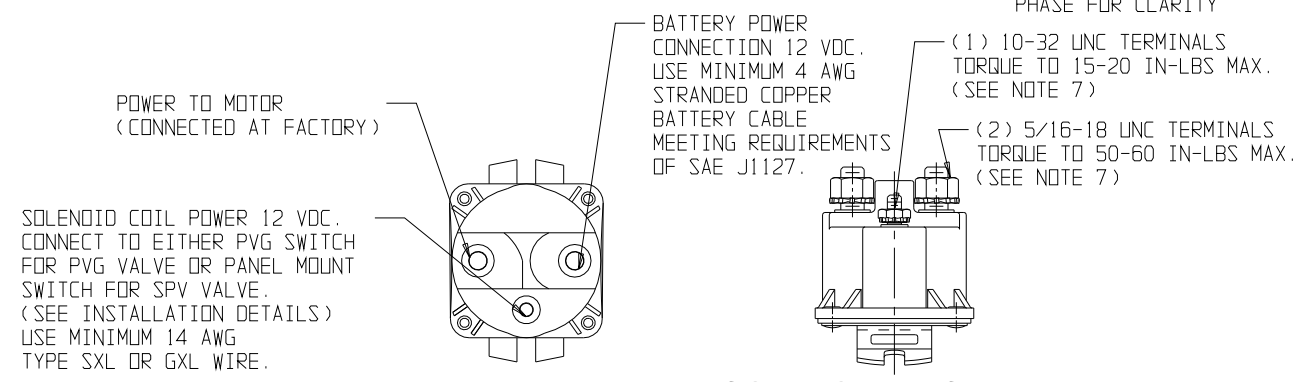
# HALE TYPE ESPS-12 PRIMING PUMP



## INSTALLATION NOTES:

- 1) USE A MINIMUM OF 1/2" TUBING FOR BOOSTER PUMPS.
- 2) USE A MINIMUM OF 3/4" PIPE FOR MIDSHIP PUMPS.
- 3) CONNECT TO HIGHEST POINT ON DISCHARGE OF MAIN PUMP IF PRIMING WHILE THE PUMP IS STATIONARY.
- 4) CONNECT TO HIGHEST POINT ON THE SUCTION NEAR THE IMPELLER EYE IF PRIMING WHEN THE MAIN PUMP IS RUNNING.
- 5) A SHUT-OFF VALVE, SUCH AS A HALE PVG OR SPV PRIMING VALVE, MUST BE LOCATED IN THE PRIMING LINE BETWEEN THE PRIMING PUMP AND THE MAIN PUMP.
- 6) THE PRIMING PUMP MUST BE MOUNTED SO THAT THE MOTOR SHAFT IS IN A HORIZONTAL PLANE WITH THE PRIMING PUMP DISCHARGE FACING DOWN.
- 7) GROUND THE PRIMING PUMP TO THE TRUCK CHASSIS, USING THE GROUND STRAP FURNISHED. THE GROUND STRAP IS REQUIRED FROM THE TRUCK CHASSIS TO THE TERMINAL STUD ON THE PRIMING PUMP. THIS IS TO INSURE A GROUND FOR THE MOTOR. THE CABLE IS SIZED FOR A 12 VOLT DC 300 AMP LOAD.
- 8) DURING THE PRIMING OPERATION (EVACUATING AIR), DO NOT RUN THE MOTOR FOR MORE THAN 60 SECONDS.

| PART NO.      | VOLTAGE DC | AMPERES MAX. |
|---------------|------------|--------------|
| 200-0042-00-0 | 12         | 300          |



## NOTES:

- 1) MOTOR ROTATION IS THE SAME FOR BOTH NEGATIVE AND POSITIVE GROUND SYSTEMS.
- 2) WEIGHT OF PRIMING PUMP AND MOTOR IS 27 LBS. (12.2 Kg).
- 3) THEORETICAL DISPLACEMENT IS .066 GAL. (.25 LITERS) PER REVOLUTION OR 47,000 CU. IN. (770,000 CU. CM) AIR PER MINUTE.
- 4) VACUUM CAPABILITY: 24 IN. Hg (610 MM Hg).
- 5) TO AID IN LONG PRIMER LIFE AND PROPER PERFORMANCE, IT IS RECOMMENDED THAT THE PRIMING PUMP BE CLEANED YEARLY OR AFTER 500 CYCLES OF USE. SEPARATE THE PUMP BODY AND HEAD FROM THE MOTOR AND REMOVE ANY BLACK BUILD UP OR CONTAMINATES WITH SAFETY KLEEN OR STODDARD SOLVENT. USE CARE TO REINSTALL THE VANES IN THE SAME ORIENTATION AND TO GREASE THE SHAFT SEAL.
- 6) SEE PLATE NO. 938 FOR 24V PRIMING PUMP DETAILS.
- 7) TO PREVENT DAMAGE TO PLASTIC HOUSING WHEN INSTALLING OR REMOVING LEADS, DO NOT APPLY SIDE LOADS TO NUTS.

| ECO NO | REV | CHANGED FROM           | BY  | DATE    | APVD |
|--------|-----|------------------------|-----|---------|------|
| 0506   | A   | RELEASE FOR PRODUCTION | MLJ | 1-11-07 | MAL  |

HALE PRODUCTS, INC.  
A Unit of IDEX Corporation  
Conshohocken, PA 19428 USA

HALE

NOT TO BE REPRODUCED OR USED TO MAKE OTHER DRAWINGS OR MACHINERY.

DRAWN: MLJ  
CHECKED: MAL  
DATE: 1-11-07  
SIZE: D  
SCALE: FULL

## INSTALLATION DETAILS

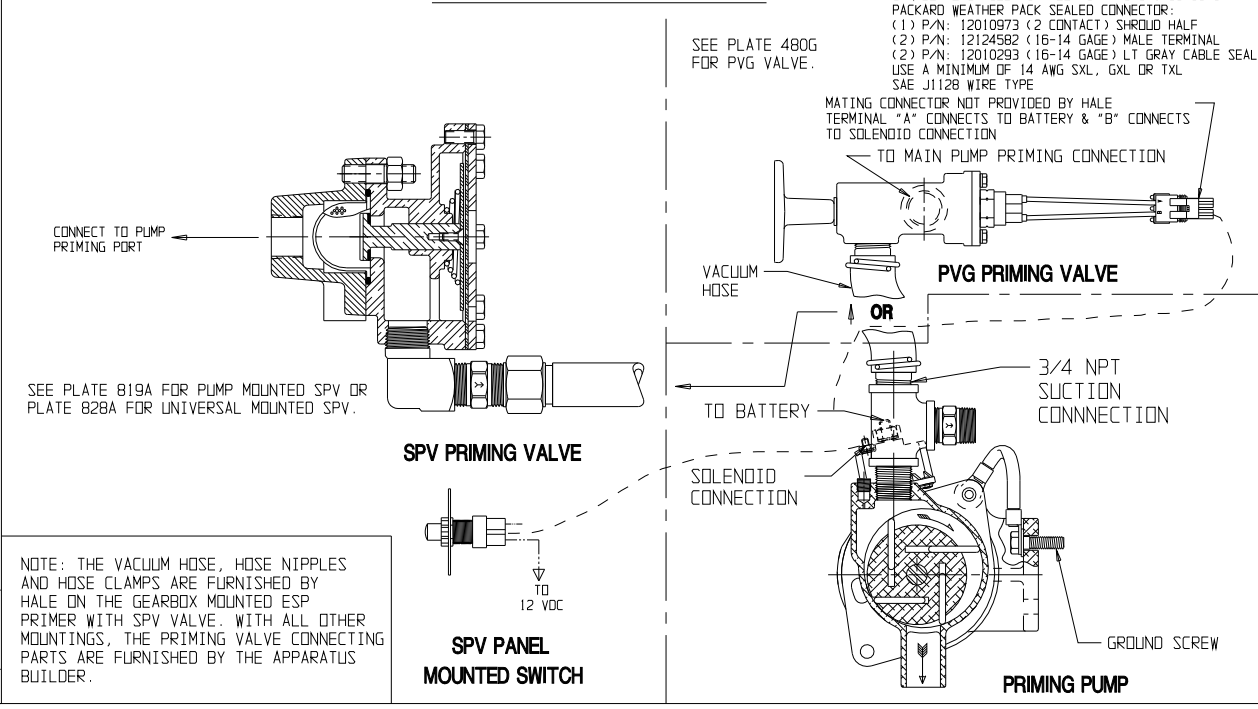


PLATE NO. 1144AA