

PUMP MODEL	GEAR RATIO	E
SMD**	19 X 1.96	16.25
SMD**	21 X 2.13	16.06
SMD**	23 X 2.32	15.91

THE HALE TYPE SMD PUMP IS AVAILABLE IN 1250 & 1500 GPM NEPA RATINGS THE COMPLETE PUMP MODEL NUMBER IS FORMED AS FOLLOWS: (SEE NOTE 2)

FOR EXAMPLE: A SMD PUMP IS REQUIRED TO HAVE 300 LPM @ 22.5 A 1250 GPM RATING WITH 32 GEAR RATIO. PUMP MODEL NUMBER WOULD BE AS SHOWN: MODEL CAPACITY RATIO TYPE

WARNING
EXCEEDING THESE LIMITS OR FAILURE TO FOLLOW THE RECOMMENDATIONS OUTLINED ON THIS DRAWING COULD DAMAGE THE PUMP AND RESULT IN PERSONAL INJURY.

SMD PUMP MAXIMUM HYDROSTATIC PUMP PRESSURE = 600 PSIG
SMD PUMP MAXIMUM HYDRODYNAMIC PUMP PRESSURE = 400 PSIG
MAXIMUM POWER INPUT FOR PUMPING = 450 HP
MAXIMUM TORQUE ON PUMP SHAFT = 2300 LBS-FT
MAXIMUM GEARBOX SHAFT TORQUE (SMD) = 18,000 LBS-FT

PUMP MODEL	MAX GEARBOX INPUT RPM
SMD-23X	2580
SMD-21X	2600
SMD-19X	3000

SEE HALE TORQUE LIMIT CHART F-72 FOR ADDITIONAL DATA.
THIS PRODUCT AND ITS COMPONENTS MAY BE PROTECTED BY ONE OR MORE OF THE FOLLOWING U.S. PATENTS AND OTHER PATENTS PENDING:
4,337,930 5,018,665
4,587,862 5,159,393
4,653,978

HALE TYPE SMD-X SERIES PUMP WITH "XG" SERIES

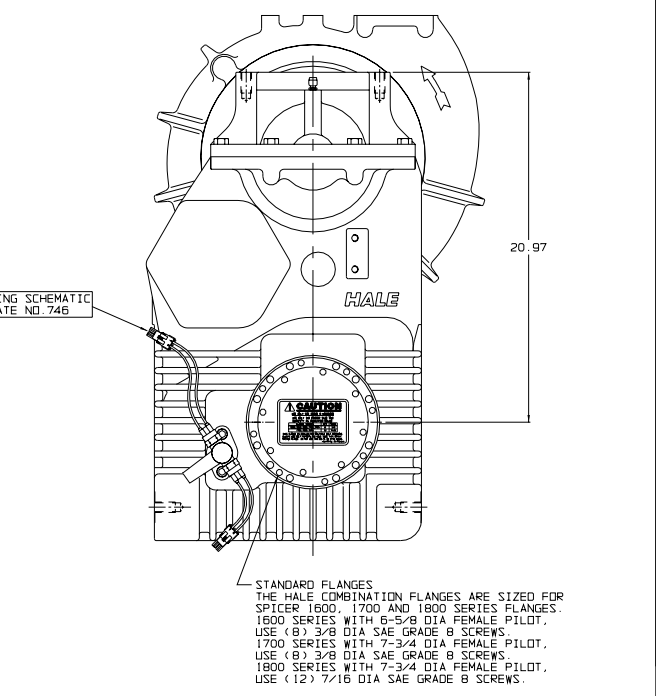
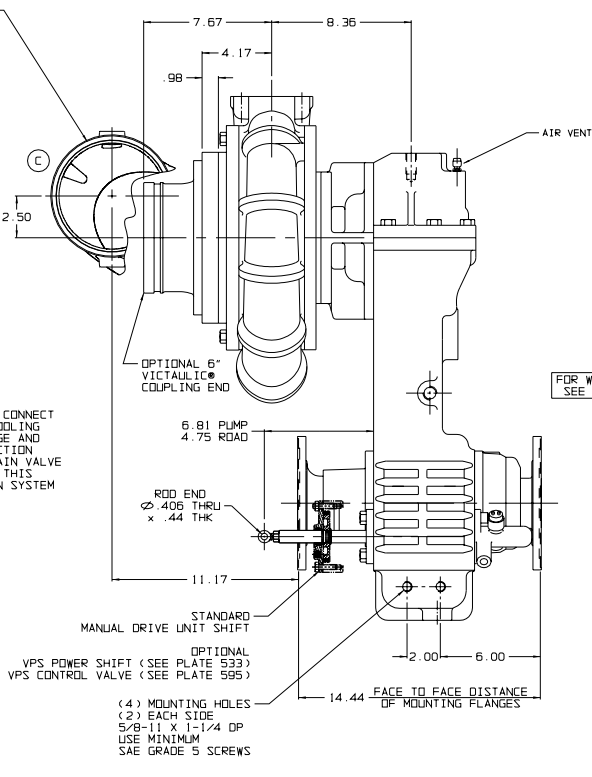
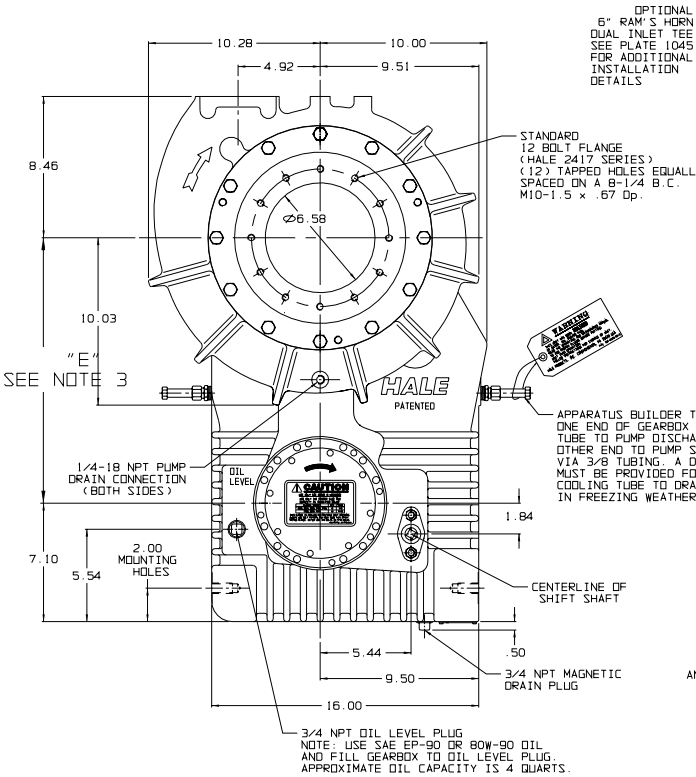


PLATE NO. 1041AC

ECD NO	REV	CHANGED FROM	BY	DATE	APVO
04-103	A	RELEASED	OLM	04-18-04	MAL
04-111	B	ADDED NOTE 4.	FAS	05-24-04	MAL
04-288	C	UPDATED RAM'S HORN	MAB	08-27-04	MAL

HALE HALE PRODUCTS, INC.
A Unit of IDEX Corporation
Conshohocken, PA 19428 USA

NOT TO BE REPRODUCED OR USED TO MAKE OTHER DRAWINGS OR MACHINERY

DRAWN BY DATE 04-12-04
CHECKED BY

SIZE SCALE: 1/3