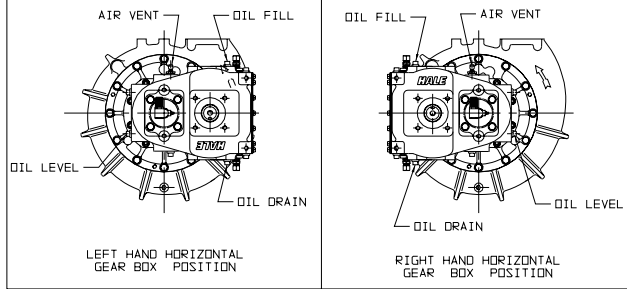


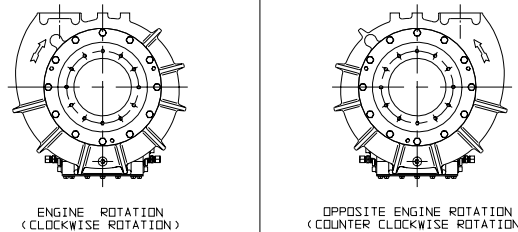
STANDARD GEAR BOX CONFIGURATIONS

(LEFT OR RIGHT OFFSET AS VIEWED FROM PUMP INLET)



STANDARD PUMP ROTATION CONFIGURATIONS

(SHOWN WITH STANDARD VERTICAL TRANSMISSION)



PUMP MODEL GEAR RATIO

SMD*-12A	1.24
SMD*-14A	1.40
SMD*-15A	1.59
SMD*-18A	1.81
SMD*-20A	1.97
SMD*-21A	2.16
SMD*-23A	2.37

THE HAILE TYPE SMD PUMP IS AVAILABLE IN 1250 & 1500 GPM NFPA RATINGS. THE COMPLETE PUMP MODEL NUMBER IS FORMED AS FOLLOWS: (SEE NOTE 4)

FOR EXAMPLE, A SMD PUMP IS REQUIRED TO HAVE A 1250 GPM RATING WITH A 2.37 GEAR RATIO. THE PUMP MODEL NUMBER WOULD BE AS SHOWN.

SMD 125-23 A	PUMP RATED	PUMP GEARBOX
	MODEL	RATIO TYPE

WARNING

EXCEEDING THESE LIMITS OR FAILURE TO FOLLOW THE RECOMMENDATIONS OUTLINED ON THIS DRAWING COULD DAMAGE THE PUMP AND RESULT IN PERSONAL INJURY.

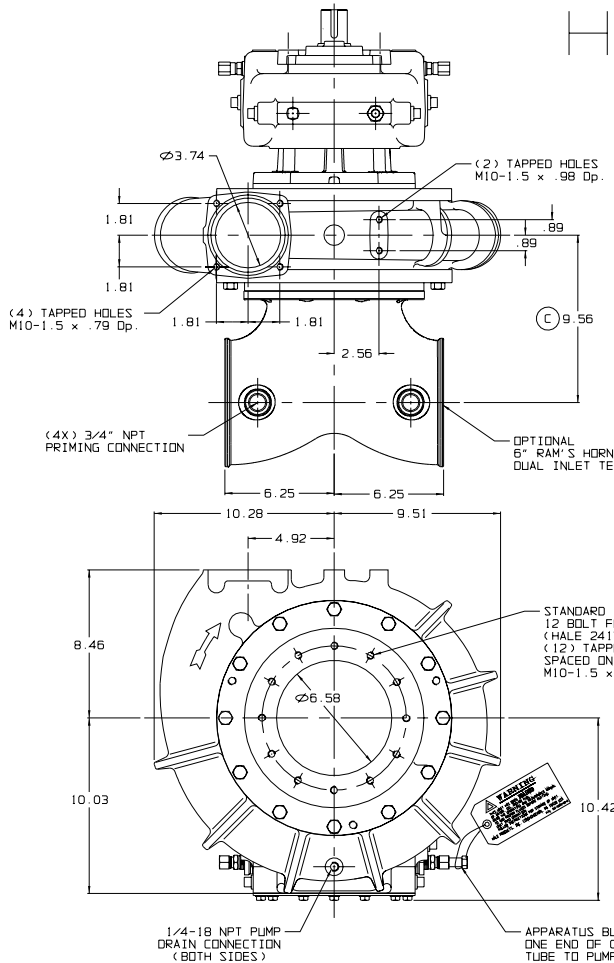
SMD PUMP MAXIMUM HYDROSTATIC PUMP PRESSURE = 600 PSIG
SMD PUMP MAXIMUM HYDRODYNAMIC PUMP PRESSURE = 400 PSIG
MAXIMUM POWER INPUT FOR PUMPING = 300 HP

PUMP MODEL	MAX GEARBOX INPUT RPM
SMD*-12A	4180
SMD*-14A	3700
SMD*-15A	3270
SMD*-18A	2800
SMD*-20A	2540
SMD*-21A	2410
SMD*-23A	2200

SEE HAILE TORQUE LIMIT CHART F-72 FOR ADDITIONAL DATA.

THE PUMPING TORQUE REQUIREMENTS MIGHT EXCEED THE TRUCK'S TRANSMISSION CASE, POWER TAKE-OFF AND DRIVELINE COMPONENT LIMITS. CONTACT THE RESPECTIVE EQUIPMENT MANUFACTURER FOR THEIR APPROVAL OF THE PUMPING APPLICATION.

HAILE TYPE SMD-A SERIES WITH "A" SERIES GEARBOX



WEIGHT: 295 LBS

NOTES:

- 1) DIMENSIONS ARE IN INCHES.
- 2) TO CONFORM TO NFPA 1901, APPARATUS MANUFACTURER MUST INSTALL (4) SHIFT AND THROTTLE CONTROL WARNING LIGHTS. THE INDICATOR LIGHTS ARE FURNISHED WITH PUMP. SEE LATEST PLATE NO. 625.
- 3) 1410/1510/1610 COMPANION DRIVE FLANGE, PRIMING SYSTEM, DISCHARGE & SUCTION VALVES ARE AVAILABLE.
- 4) TO ACHIEVE 1500 GPM PUMP PERFORMANCE (SMD150-A), MIDSHIP MOUNTED, REQUIRES USE OF OPTIONAL 6" RAM'S HORN DUAL INLET TEE. FOR DETAILS SEE PLATE 1045.
- 5) RELIEF VALVES ARE AVAILABLE IN THE FOLLOWING MODELS:

RELIEF VALVE MAXIMUM FLOW LIMIT	RELIEF VALVE MODEL
1250 GPM	P35
1500 GPM	TPM/P35 SYSTEM

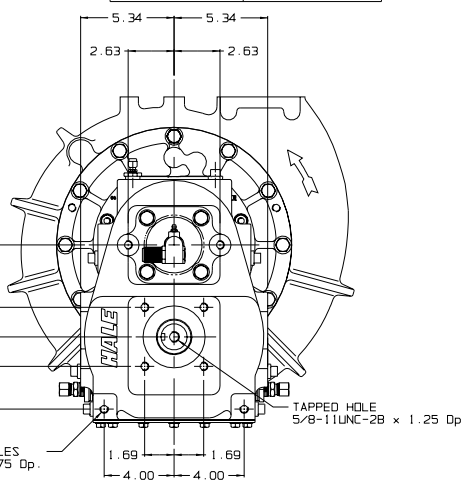
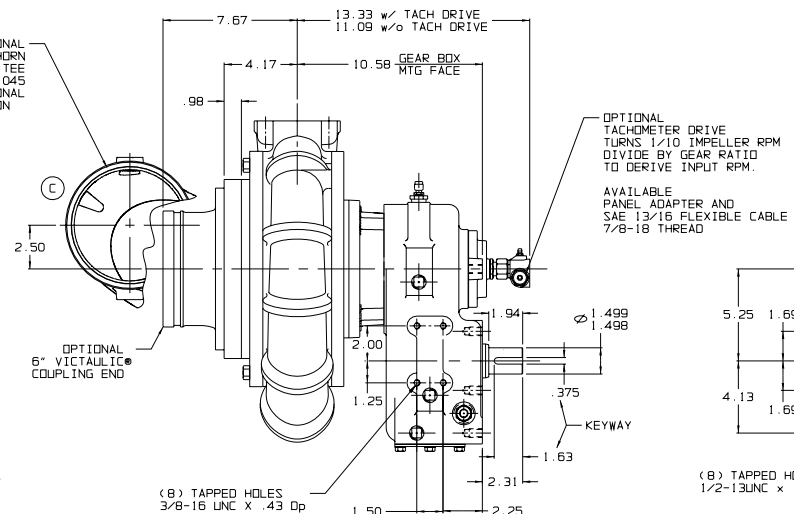


PLATE NO. 1043AD

ECD NO	REV	CHANGED FROM	BY	DATE	APVD
04-103	A	RELEASED	OLM	04-18-04	MAL
04-111	B	ADDED NOTE 4	FAS	05-24-04	MAL
04-288	C	UPDATED RAM'S HORN	MAB	08-27-04	MAL
04-292	D	ADDED MOUNTING PADS	JFG	12-07-04	MAL



HAILE PRODUCTS, INC.
A Unit of IDEX Corporation
Conshohocken, PA 19428 USA

NOT TO BE REPRODUCED OR USED TO MAKE OTHER DRAWINGS OR MACHINERY. DRAWN: OLW, CHECKED: MAL, DATE: 04-12-04, SIZE: F, SCALE: 1/3