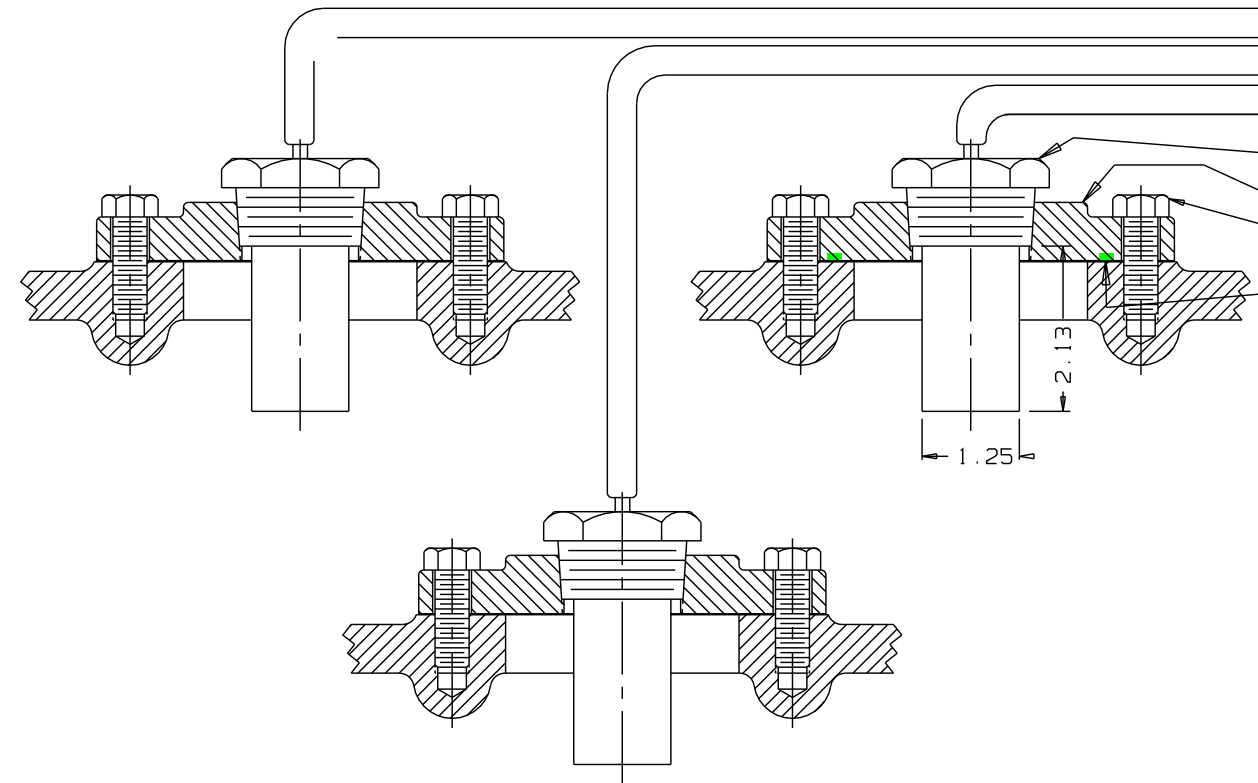
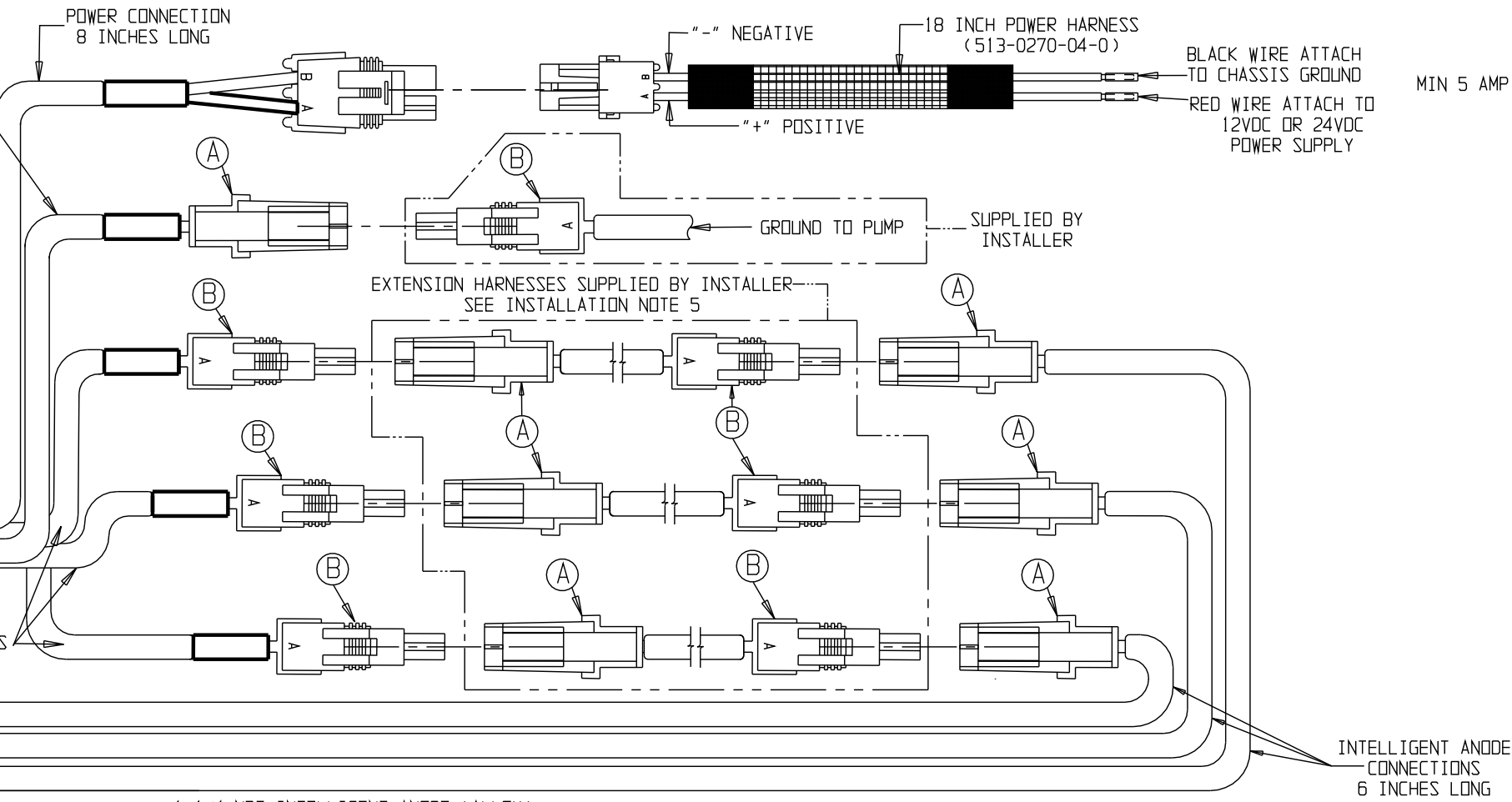
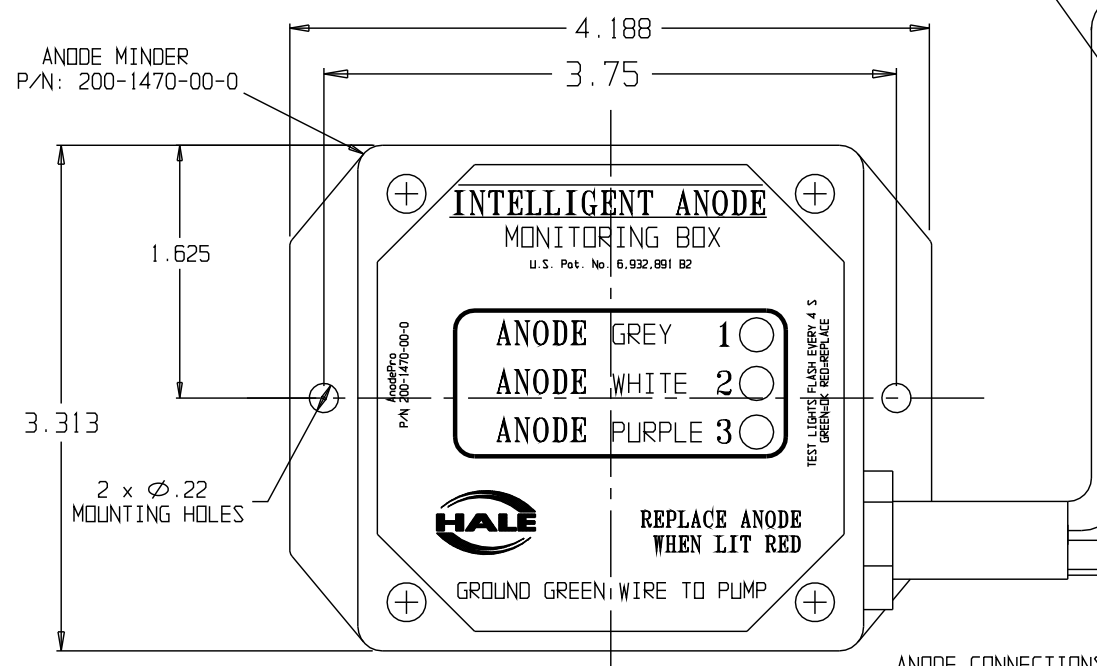


ANODEPRO KIT
 HALE PART NO. 200-1470-00-0 ANODE MINDER
 HALE PART NO. 513-0270-04-0 WIRING HARNESS



1-1/4 NPT INTELLIGENT ANODE (ALLOY)
 HALE PART NO. 029-0511-05-0

1-1/4 NPT FLANGE KIT HALE PART NO. 115-1630-50-0 (CAST IRON)
 HALE PART NO. 115-1260-00-0 FLANGE
 HALE PART NO. 018-1812-25-0 SCREWS (4) EACH
 HALE PART NO. 042-0390-00-0 SEAL RING

- INSTALLATION NOTES:
1. MOUNT MONITORING BOX IN PROTECTED AREA OR COMPARTMENT.
 2. CONNECT MINIMUM 5 AMP 12V OR 24V DC POWER SUPPLY.
 3. CONNECT GREEN GROUND WIRE TO PUMP BODY.
 4. THREAD INTELLIGENT ANODES INTO CORRESPONDING 115 FLANGES WITH 1-1/4" NPT HOLES ON PUMP. USE PST OR EQUAL ON ALL THREADS. (REFER TO PLATE 869AC.)
 5. CONNECT GREY, WHITE AND PURPLE CABLES TO INTELLIGENT ANODES. EXTENSION HARNESSES MUST BE SUPPLIED BY INSTALLER.

NOTE:
 ANODE MINDER MONITORING BOX CAN BE USED WITH 1 TO 3 INTELLIGENT ANODES. UN-USED CONNECTIONS NEED TO BE GROUNDED TO PUMP BODY. SUGGEST CONNECTING TO SAME GROND POINT AS GREEN GROUND WIRE. OTHERWISE UNUSED LIGHTS WILL FLASH RED.

EXTENSION HARNESS WIRE NEEDS TO BE PROTECTED WITH LOOM.

- OPERATION NOTES:
1. LED LIGHTS ON MONITORING BOX DISPLAY EVERY 4 SECONDS.
 2. GREEN MEANS ANODE IS OK. RED MEANS REPLACE ANODE

EXTENSION HARNESSES CONSIST OF:
 REQUIRED LENGTH MINIMUM OF 20 GAUGE (MIN) TYPE GXL WIRE

- A PACKARD SHROUD P/N: 12010996
 MALE TERMINAL P/N: 12089040
 18-20 GAUGE GREEN WIRE CABLE SEAL P/N: 12015323
- B PACKARD TOWER P/N: 12015791
 FEMALE TERMINAL P/N: 12089188
 18-20 GAUGE GREEN WIRE CABLE SEAL P/N: 12015323

AnodePro Installation and Operation

PL1190AA

0935	A	RELEASE FOR PRODUCTION	MM	12-17-09	MAL	HALE PRODUCTS, INC. A Unit of IDEX Corporation Conshohocken, PA 19428 USA
ECD	NO	CHANGED FROM	BY	DATE	APVD	
NOT TO BE REPRODUCED OR USED TO MAKE OTHER DRAWINGS OR MACHINERY						DRAWN MM CHECKED PW
DATE 10-26-09						SIZE D SCALE : NTS