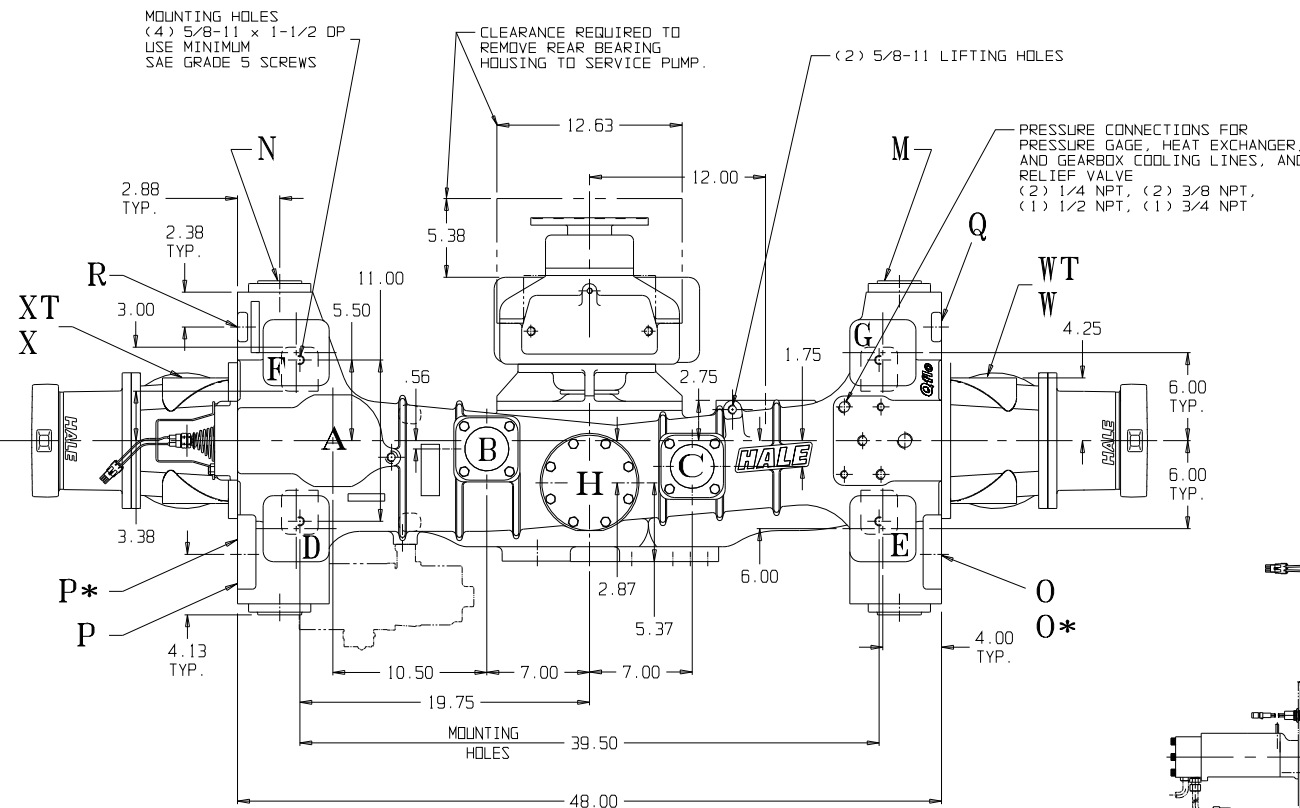
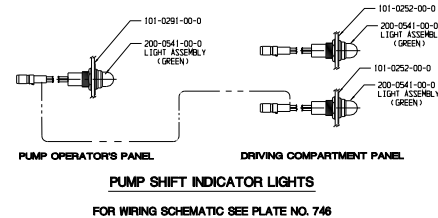


OPTIONAL DISCHARGE FLANGES			
STANDARD	OPTIONAL	STANDARD HOLE	
A	2-1/2, 3 & 4 NPT	CAST SOLID	
B	1-1/4, 2, 2-1/2 & 3 NPT	3	
C	1-1/4, 2, 2-1/2 & 3 NPT	3	
D	1-1/4, 2, 2-1/2 & 3 NPT	CAST SOLID	
E	1-1/4, 2, 2-1/2 & 3 NPT	CAST SOLID	
F	1-1/4, 2, 2-1/2 & 3 NPT	CAST SOLID	
G	1-1/4, 2, 2-1/2 & 3 NPT	CAST SOLID	
H	2-1/2, 3 & 4 NPT	4	
K	1-1/4, 2, 2-1/2 & 3 NPT	3	
L	1-1/4, 2, 2-1/2 & 3 NPT	3	
M	1-1/4, 2, 2-1/2 & 3 NPT	3	
N	1-1/4, 2, 2-1/2 & 3 NPT	3	
O	1-1/4, 2, 2-1/2, 3 NPT	3	
P	1-1/4, 2, 2-1/2, 3 NPT	3	
Q	1-1/4, 2, 2-1/2 & 3 NPT	3	
R	1-1/4, 2, 2-1/2 & 3 NPT	3	
S	TANK SUCTION	3	
UT	1-1/4, 2, 2-1/2 & 3 NPT	3	
VT	1-1/4, 2, 2-1/2 & 3 NPT	3	
WT	1-1/4, 2, 2-1/2 & 3 NPT	3	
XT	1-1/4, 2, 2-1/2 & 3 NPT	3	
O*	2-1/2, 3 AND 4 NPT	4	
P*	2-1/2, 3 AND 4 NPT	4	

NOTES:
 1. REFER TO HALE PUMP/ENGINE COMBINATION LIST TO SELECT PROPER RATIO TO MATCH PUMP WITH ENGINE.
 2. WEIGHT OF STANDARD QFLO PLUS 1250 G.P.M. PUMP AS SHOWN LESS PRIMING PUMP = 1100 LBS.



PUMP MODEL	GEAR RATIO	GEARBOX TYPE	DIMENSIONS			
			W	XX	Y	Z
Q flo Plus *-28	2.83	EXTRA LONG (X) GEARBOX	14.56	5.44	4.06	1.84
Q flo Plus *-25	2.55		14.75			
Q flo Plus *-23	2.32		14.90			
Q flo Plus *-21	2.13		15.06			
Q flo Plus *-19	1.96		15.25			
Q flo Plus *-23	2.28	** LONG (L) GEARBOX	12.38	4.31	5.18	2.00
Q flo Plus *-21	2.05		12.56			
Q flo Plus *-19	1.86		12.75			
Q flo Plus *-17	1.71		12.94			
Q flo Plus *-15	1.58		13.13			

* RATED CAPACITY (GPM) 750, 1000 AND 1250 ** THE LONG (L) GEARBOX IS STANDARD AND WILL BE SUPPLIED UNLESS OTHERWISE SPECIFIED.

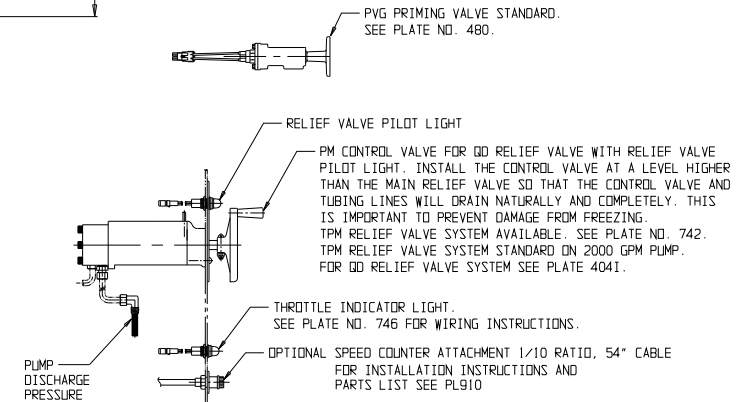
EXAMPLE: THE MODEL NUMBER FOR A 1000 GPM RATED PUMP WITH A 2.28 GEAR RATIO AND A LONG GEARBOX WOULD BE QFLO PLUS100-23L.

WARNING

EXCEEDING THESE LIMITS OR FAILURE TO FOLLOW THE RECOMMENDATIONS OUTLINED ON THIS DRAWING COULD DAMAGE THE GEARBOX AND RESULT IN PERSONAL INJURY.
 QFLO MIDSHIP MAXIMUM PUMP PRESSURE (HYDROSTATIC & HYDRODYNAMIC) = 600 PSI
 2HP HIGH PRESSURE PUMP MAXIMUM PUMP PRESSURE (HYDROSTATIC & HYDRODYNAMIC) = 1000 PSI
 MAXIMUM POWER INPUT FOR PUMPING = 450 HP.
 MAXIMUM TORQUE ON PUMP SHAFT = 2300 LBS-FT
 MAXIMUM GEARBOX SHAFT TORQUE (ROAD) = 16,000 LBS-FT

PUMP MODEL	QFLO PLUS *-23L	QFLO PLUS *-21L	QFLO PLUS *-19L	QFLO PLUS *-17L	QFLO PLUS *-15L
MAX GEARBOX INPUT RPM	2630	2920	3220	3500	3800
PUMP MODEL	QFLO PLUS *-28X	QFLO PLUS *-25X	QFLO PLUS *-23X	QFLO PLUS *-21X	QFLO PLUS *-19X
MAX GEARBOX INPUT RPM	2120	2350	2580	2800	3060

SEE HALE TORQUE LIMIT CHART F-72 FOR ADDITIONAL DATA.
 THIS PRODUCT AND ITS COMPONENTS ARE PROTECTED BY ONE OR MORE OF THE FOLLOWING U.S. PATENTS AND OTHER PATENTS PENDING:
 950,756 3,500,961 3,859,703 4,209,282 4,587,862
 3,116,694 3,726,308 3,918,681 4,311,440 4,653,978
 3,159,559 3,801,224 4,089,345 4,337,830



SUCTION (VACUUM) CONNECTIONS FOR VACUUM GAGE, HEAT EXCHANGER AND GEARBOX COOLING RETURNS, AND STRAINER FOR TPM RELIEF VALVE (2) 1/4 NPT (1) 1/2 NPT (1) 3/4 NPT

TANK SUCTION CONNECTION STANDARD: BLANK FLANGE OPTIONAL: 2-1/2 NPT, 3 NPT or 4 NPT FLANGE, 3" OR 4" SVS VALVE and/or CHECK VALVE

(2) FRONT AND (2) REAR OPENINGS MACHINED FOR 115 SERIES FLANGES. STANDARD: FRONT AND REAR BLANK. OPTIONAL: 1-1/4 NPT, 2 NPT, 2-1/2 NPT or 3 NPT, ALSO TRV, TRV-L or ANODE

3/4 NPT PRIMING TAP ALL PRIMING CONNECTIONS TO BE MADE HERE

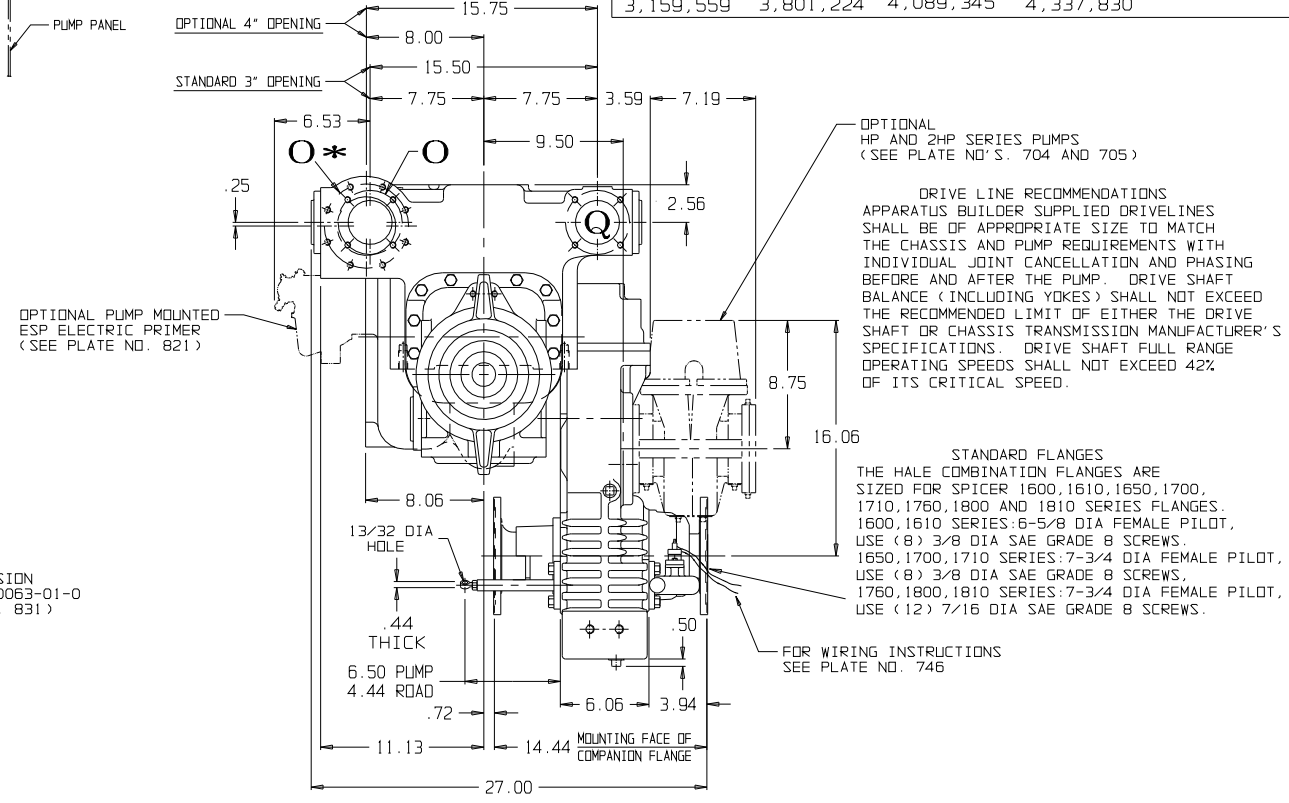
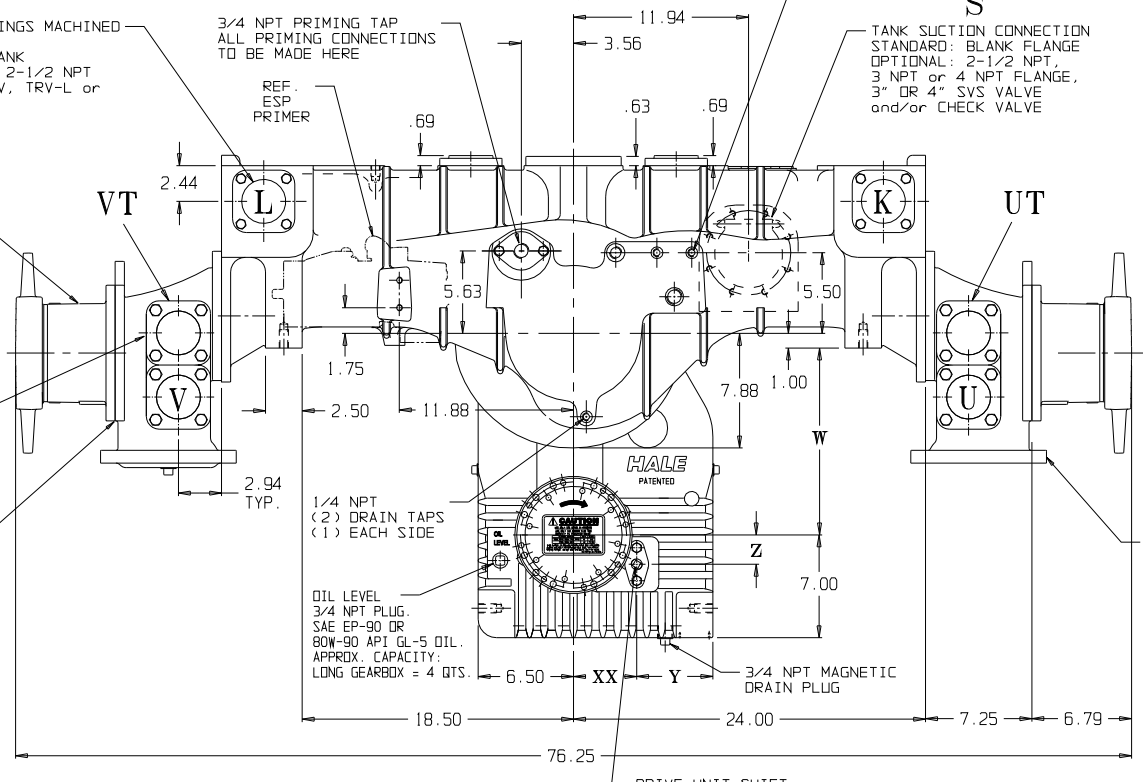


PLATE NO. 1052AB

0167	B	WAS CAST SOLID	ERR08-05-05	MAL
04-256	A	RELEASED FOR PRODUCTION	FAS10-11-04	MAL
ECO NO/REV		CHANGED FROM	BY DATE	APVD

HALE PRODUCTS, INC. A Unit of IDEX Corporation Conshohocken, PA 19428 USA

SCALE: 25