

THIS PRODUCT AND ITS COMPONENTS MAY BE PROTECTED BY ONE OR MORE OF THE FOLLOWING U.S. PATENTS AND OTHER PATENTS PENDING:
 4,337,830 5,018,665
 4,587,862 5,139,393
 4,653,978

HALE TYPE MG SERIES PUMP

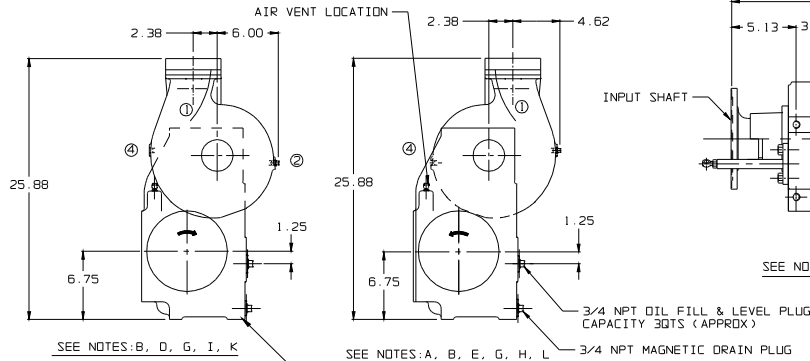
HALE TYPE MG SERIES

PUMP TYPE	RATIO
MG*-30	3.00
MG*-26	2.67
MG*-21	2.18
MG*-19	1.92
MG*-17	1.71
MG*-12	1.27
MG*-10	1.00

* RATED CAPACITY (GPM) 500, 750, 1000

EXAMPLE: THE MODEL NUMBER FOR A 1000 GPM RATED PUMP WITH A 2.18 GEAR RATIO WOULD BE MG100-21.

EXCEEDING THESE LIMITS OR FAILURE TO FOLLOW THE RECOMMENDATIONS OUTLINED ON THIS DRAWING COULD DAMAGE THE PUMP AND RESULT IN PERSONAL INJURY.
 MAX PUMP PRESSURE, HYDRODYNAMIC & HYDROSTATIC=500PSI
 MAX POWER INPUT FOR PUMPING = 325HP
 MAX DRIVE SHAFT TORQUE ROAD OPERATION 16,000 LB FT
 MAX PUMP INPUT RPM=
 PUMP RATIO 3.00 | 2.67 | 2.18 | 1.92 | 1.71 | 1.27 | 1.00
 RPM 2090 | 2350 | 2880 | 3270 | 3670 | 4940 | 6270
 READ LIMIT CHART F-72 FOR ADDITIONAL DATA

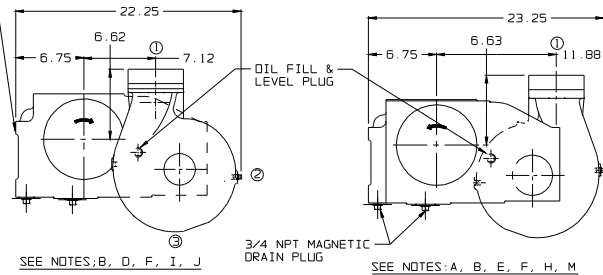


SEE NOTES B, D, F, I

SEE PLATE NO 746 FOR WIRING INSTRUCTIONS

FRONT & REAR COMBINATION FLANGES			
SPICER SERIES	1600	1700	1800
FEMALE PILOT DIAMETER	6.62	7.75	7.75
QUANTITY & SIZE GRADE B SCREWS	(8) .38	(8) .38	(12) .44
BOLT CIRCLE DIAMETER	6.13	7.25	7.25

GEAR BOXES MUST BE RIGIDLY SUPPORTED AT BOTH ENDS USING THE 5/8-11 X 1 DEEP MOUNTING HOLES. DO NOT USE THE PIPING TO SECURE THE PUMP



(8) 5/8-11 X 1 DEEP MOUNTING HOLES. MOUNTING PAD DIMENSIONS TYPICAL. USE MINIMUM SAE GRADE 5 SCREWS.

1/4 NPT DISCHARGE PRESSURE CONNECTION

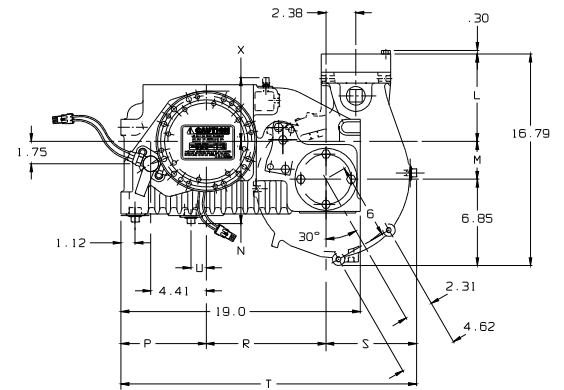
FRONT INPUT SHAFT

REAR OUTPUT SHAFT

13/32 DIA HOLE MANUAL DRIVE UNIT SHIFT STANDARD. VPS POWER SHIFT AVAILABLE (SEE PLATE NO 533)

6" VICTAULIC CONNECTION IT IS RECOMMENDED THAT THE APPARATUS BUILDER USE 6" MANIFOLDING FROM THE PUMP SUCTION TO THE HOSE ADAPTER AT THE OPERATORS PANEL (FOR USE WITH VICTAULIC STYLE 77 CLAMP)

3/4 NPT OIL FILL & LEVEL PLUG USE SAE EP-90 OR 80W-90 API GL-5 OIL. CAPACITY 3 QTS. (APPROX)



WEIGHTS OF VARIOUS MG PUMPS

STD. SPLIT SHAFT TYPE = 240 LBS (MG50 & MG75), 245 LBS (MG100)
 POWER TAKE-OFF TYPE = 200 LBS (MG50 & MG75), 205 LBS (MG100)

- NOTE:
- A) SPLIT SHAFT WITH REAR DRIVE SHAFT NOT SHOWN
 - B) PTO WITH REAR DRIVE SHAFT BLANKED-OFF
 - D) GEAR BOX FRONT OF PUMP
 - E) GEAR BOX REAR OF PUMP
 - F) GEAR BOX HORIZONTAL
 - G) GEAR BOX VERTICAL
 - H) ENGINE ROTATION PTO
 - I) OPPOSITE ENGINE ROTATION PTO
 - J) DISCHARGE POSITIONS ① ② ③
 - K) DISCHARGE POSITIONS ① ② ③
 - L) DISCHARGE POSITIONS ① ④
 - M) DISCHARGE POSITIONS ① ②

POSITION ① STANDARD

PUMP RATIO	DIMENSIONS											
	L	M	N	P	R	S	T	U	V	W	X	Y
3.00	7.18	2.75	6.38	6.75	9.50	7.00	23.25	1.25	1.12	4.62	4.75	6.62
2.18	6.88	3.06	6.38	6.75	9.50	7.00	23.25	1.25	1.12	4.62	4.75	6.62
2.67	6.94	3.00	6.62	7.00	9.25	6.75	23.00	1.25	1.12	4.88	4.50	6.38
1.92	6.94	3.00	6.38	6.75	9.50	7.00	23.25	1.25	1.12	4.62	4.50	6.38
1.27												
1.00												

PLATE NO 865AB

01-154	B	CORRECTED D.A. LENGTH DIM	AFM	3-23-01	MAL
99-190	A	REDRAWN ON CAD - UPDATED	DPL	7-13-99	RET
ECD NO	REV	CHANGED FROM	BY	DATE	APVD



HALE PRODUCTS, INC.
 A Unit of IDEX Corporation
 Conshohocken, PA 19428 USA

COPYRIGHT © 1993 IDEX CORPORATION
 NOT TO BE REPRODUCED OR USED TO MAKE OTHER DRAWINGS OR MACHINERY.
 DRAWN WFM
 CHECKED RET
 DATE 1-19-93
 SIZE D
 SCALE : .25