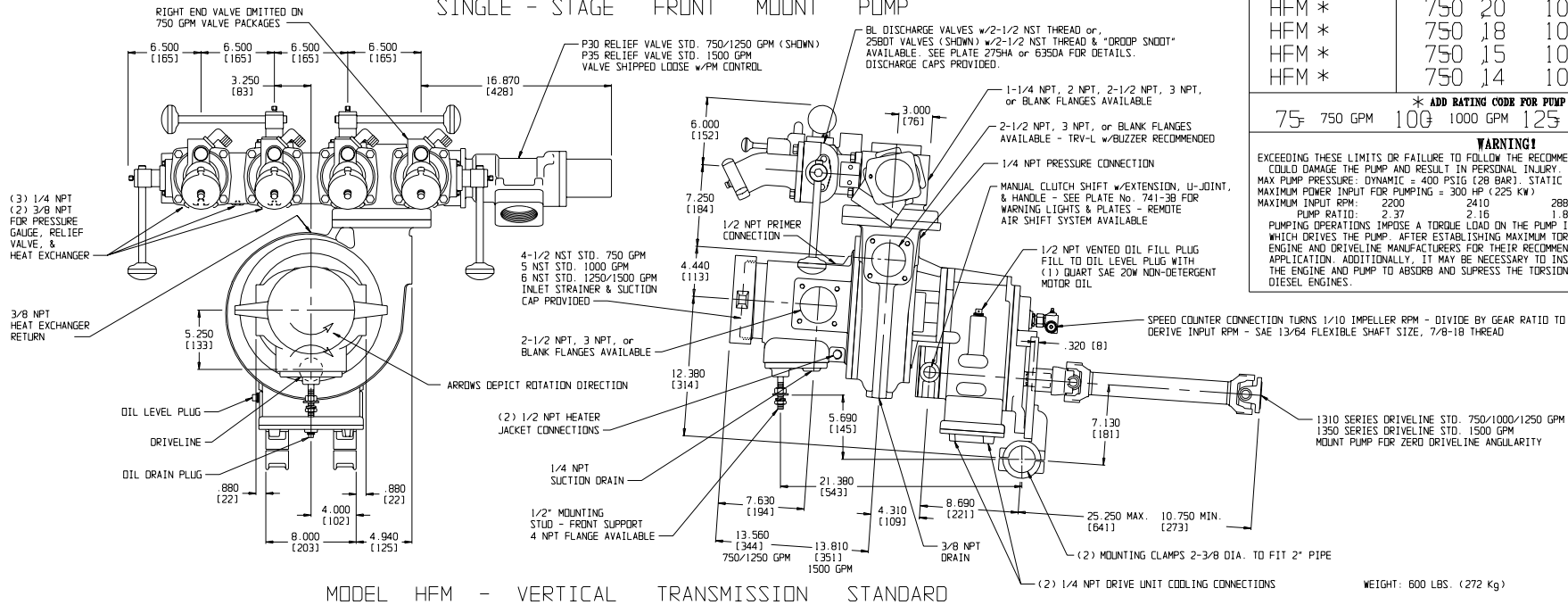
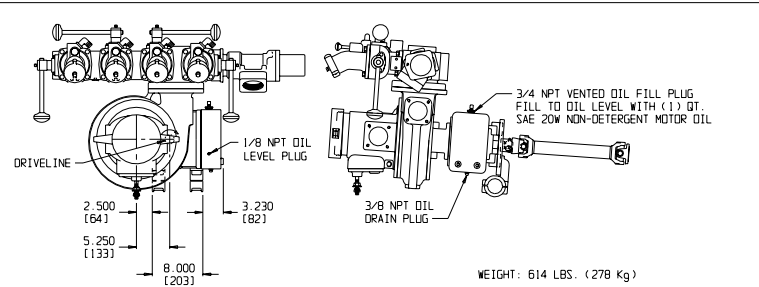


HALE TYPE HFM PUMP SER

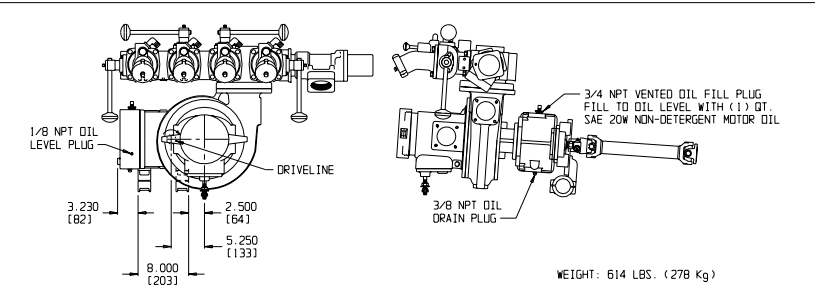
SINGLE - STAGE FRONT MOUNT PUMP



MODEL HFM - VERTICAL TRANSMISSION STANDARD



MODEL HFM - HORIZONTAL RIGHT TRANSMISSION



OPTIONAL MODEL HFM - HORIZONTAL LEFT TRANSMISSION OPTIONAL

MODEL	RATING	GPM	RATIO
HFM *	750	23	1000
HFM *	750	21	1000
HFM *	750	20	1000
HFM *	750	18	1000
HFM *	750	15	1000
HFM *	750	14	1000

* ADD RATING CODE FOR PUMP MODEL				
75	750 GPM	100	1000 GPM	125 1250 GPM 150 1500 GPM

WARNING!
EXCEEDING THESE LIMITS OR FAILURE TO FOLLOW THE RECOMMENDATIONS OUTLINED ON THIS DRAWING COULD DAMAGE THE PUMP AND RESULT IN PERSONAL INJURY.
MAX PUMP PRESSURE: DYNAMIC = 400 PSIG (28 BAR). STATIC = 600 PSIG (41 BAR)
MAXIMUM POWER INPUT FOR PUMPING = 300 HP (225 KW)
MAXIMUM INPUT RPM: 2200 2410 2880 3280 3720
PUMP RATIO: 2:37 2:18 1:81 1:59 1:40
PUMPING OPERATIONS IMPOSE A TORQUE LOAD ON THE PUMP INPUT SHAFT AND RELATED EQUIPMENT WHICH DRIVES THE PUMP. AFTER ESTABLISHING MAXIMUM TORQUE LOADS, SUBMIT THE DATA TO THE ENGINE AND DRIVELINE MANUFACTURERS FOR THEIR RECOMMENDATION AND APPROVAL OF THE APPLICATION. ADDITIONALLY, IT MAY BE NECESSARY TO INSTALL A DAMPENING DEVICE BETWEEN THE ENGINE AND PUMP TO ABSORB AND SUPPRESS THE TORSIONAL VIBRATION INHERENT IN SOME DIESEL ENGINES.

NOTES

- TO CONFORM TO NFPA 1901, APPARATUS MANUFACTURER MUST INSTALL (4) SHIFT AND THROTTLE CONTROL WARNING LIGHTS. THE INDICATOR LIGHTS ARE FURNISHED WITH PUMP. SEE PLATE NO. 741-3B.
- THIS PRODUCT AND ITS COMPONENTS ARE PROTECTED BY ONE OR MORE OF THE FOLLOWING U.S. PATENTS AND OTHER PATENTS PENDING:
3918681, 4089345, 4311440, 4653978.
- DIMENSIONS ARE IN INCHES AND (MILLIMETERS).

PLATE NO. 741AA

HALE PRODUCTS, INC. A Unit of IDEX Corporation Conshohocken, PA 19428 USA		DRAWN		CHECKED		DATE 11-7-90		SCALE: HALF	
TN88-29	A REDRAWN & UPDATED	CK	4-21-98	MS	COPYRIGHT © NOT TO BE REPRODUCED OR USED TO MAKE OTHER DRAWINGS OR MACHINERY.		DATE	11-7-90	SCALE: HALF
ECD NO	REV	CHANGED FROM	BY	DATE	APVD				