

PUMP MODEL	GEAR RATIO	E (SEE NOTE 3)
DSD*-23R	2.28	13.38 (340)
DSD*-21R	2.05	13.56 (344)
DSD*-19R	1.86	13.75 (349)
DSD*-17R	1.71	13.94 (354)
DSD*-15R	1.58	14.13 (359)

THE HAILE TYPE DSD PUMP IS AVAILABLE IN 750, 1000, 1250 & 1500 GPM NFPA RATINGS. THE COMPLETE PUMP MODEL NUMBER IS FORMED AS FOLLOWS:

FOR EXAMPLE, A DSD PUMP IS REQUIRED TO HAVE A 1250 GPM RATING WITH A 2.28 GEAR RATIO. THE PUMP MODEL NUMBER WOULD BE AS SHOWN.

WARNING
 EXCEEDING THESE LIMITS OR FAILURE TO FOLLOW THE RECOMMENDATIONS OUTLINED ON THIS DRAWING COULD DAMAGE THE PUMP AND RESULT IN PERSONAL INJURY.
 MAXIMUM GEARBOX SHAFT TORQUE (ROAD) = 16,000 LBS-FT (21,693 N-m)

PUMP MODEL	MAX GEARBOX INPUT RPM
DSD*-23R	2630
DSD*-21R	2920
DSD*-19R	3220
DSD*-17R	3500
DSD*-15R	3800

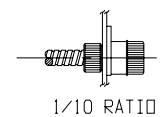
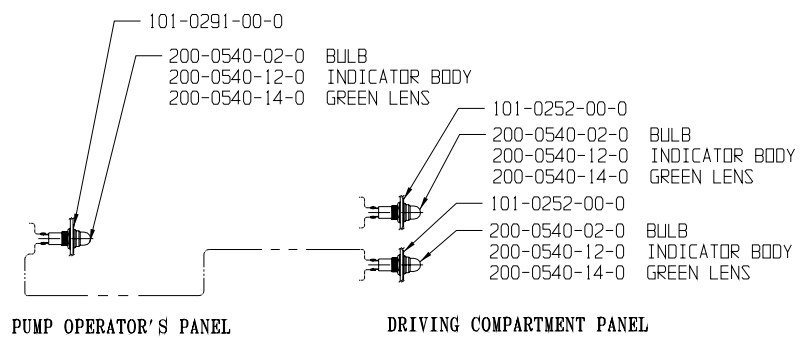
SEE HAILE TORQUE LIMIT CHART F-72 FOR ADDITIONAL DATA.
 MAXIMUM ALLOWABLE HYDRODYNAMIC PRESSURE: 400 PSIG
 MAXIMUM ALLOWABLE HYDROSTATIC PRESSURE: 600 PSIG

THIS PRODUCT AND ITS COMPONENTS MAY BE PROTECTED BY ONE OR MORE OF THE FOLLOWING U.S. PATENTS AND OTHER PATENTS PENDING:

4,337,830	5,018,665
4,587,862	5,139,393
4,653,978	

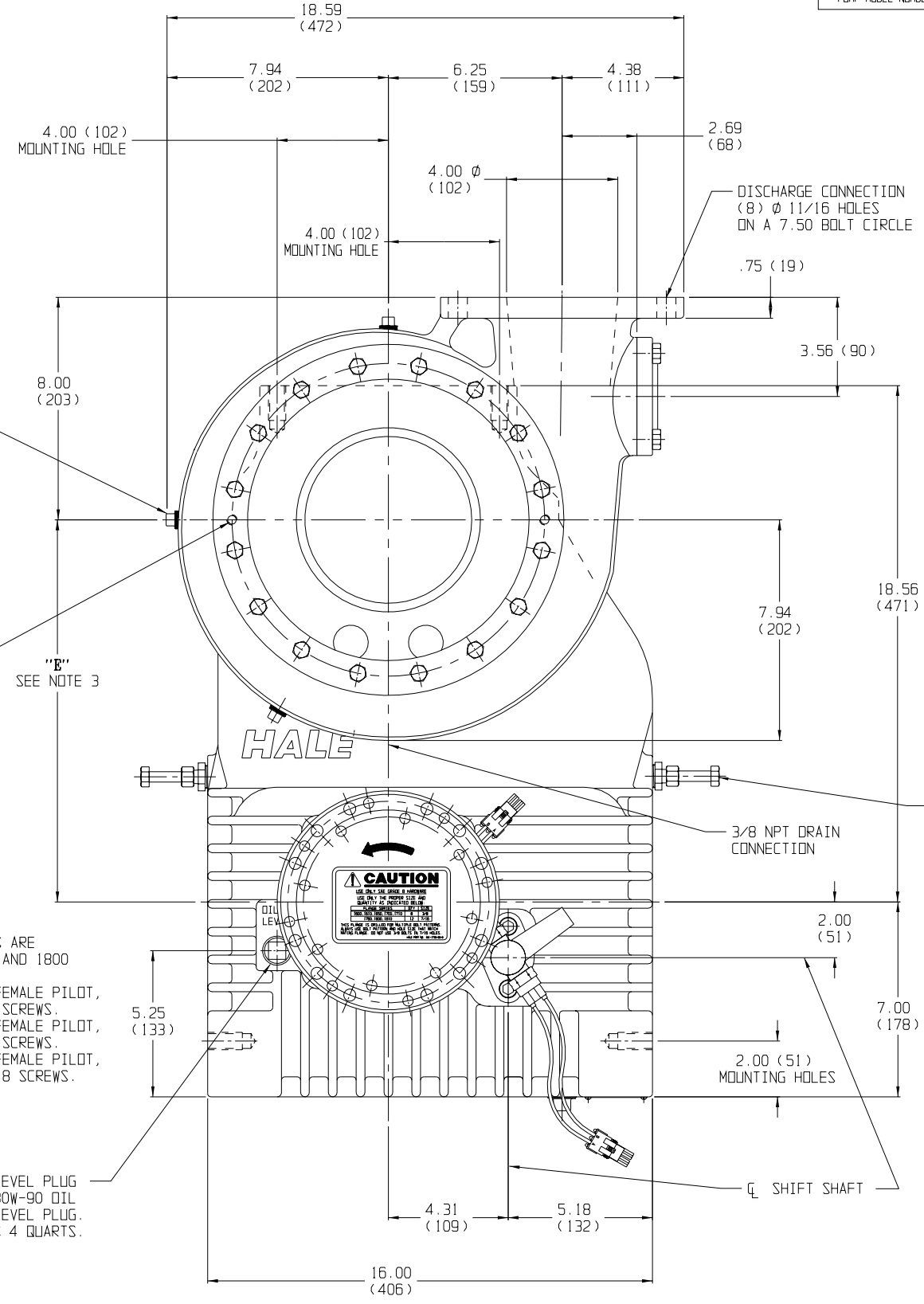
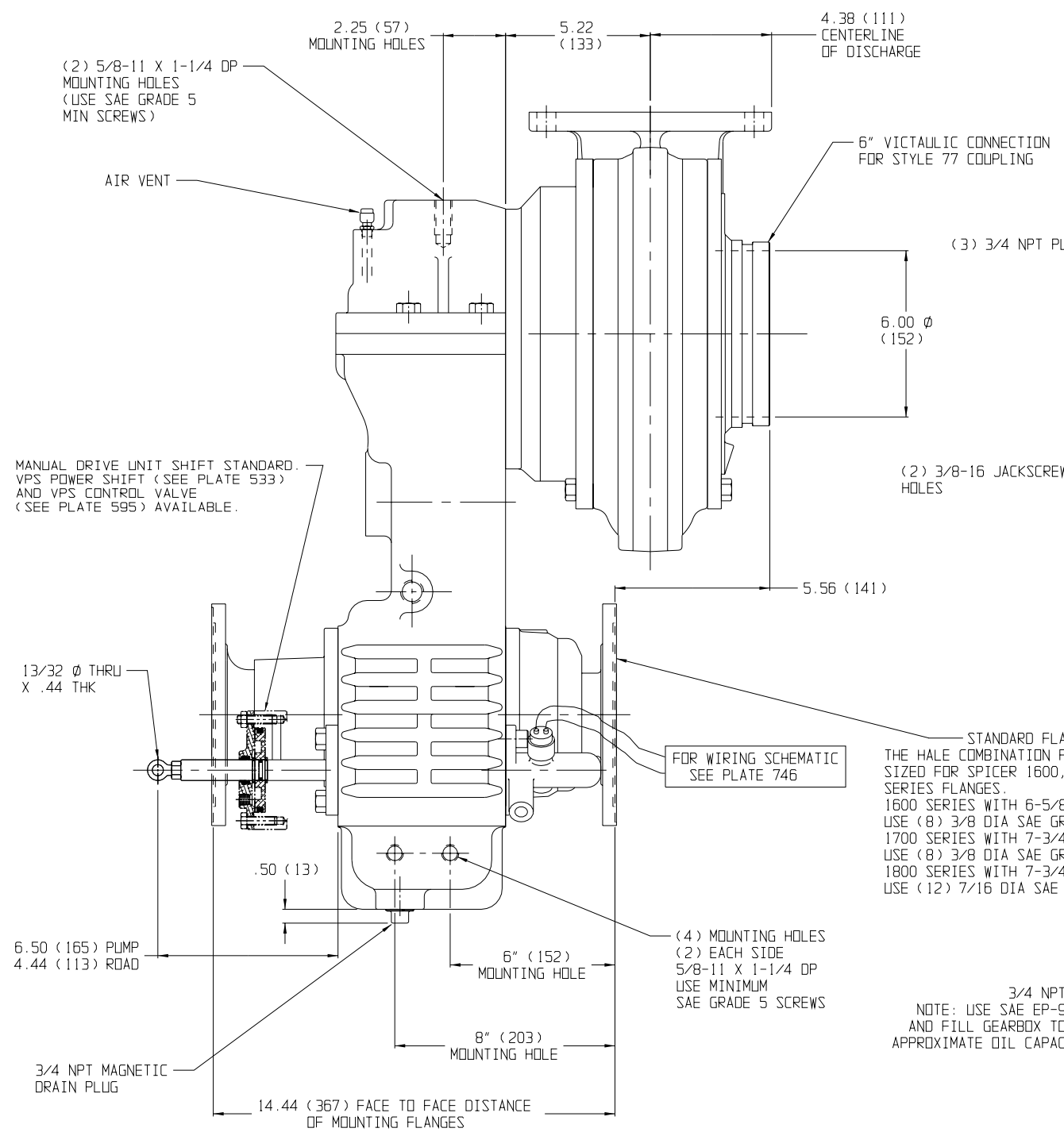
NOTES:
 1) DIMENSIONS ARE IN INCHES & (MILLIMETERS).
 2) PRIMING SYSTEM, DISCHARGE & SUCTION VALVES ARE AVAILABLE.
 3) CENTERLINE OF INPUT SHAFT TO CENTERLINE OF IMPELLER.
 4) RELIEF VALVES ARE AVAILABLE IN THE FOLLOWING MODELS:

RELIEF VALVE MAXIMUM FLOW LIMIT	RELIEF VALVE MODEL
1000 GPM (3785 L)	P30F
1250 GPM (4731 L)	P35
1500 GPM (5678 L)	TPM/P35 SYSTEM



SPEED COUNTER ATTACHMENT
 SEE PLATE 910 FOR FURTHER DETAIL

PUMP SHIFT INDICATOR LIGHTS FOR WIRING SCHEMATIC SEE PLATE NO. 746



APPARATUS BUILDER TO CONNECT ONE END OF GEARBOX COOLING TUBE TO PUMP DISCHARGE AND OTHER END TO PUMP SUCTION VIA 3/8 TUBING. A DRAIN VALVE MUST BE PROVIDED FOR THIS COOLING TUBE TO DRAIN SYSTEM IN FREEZING WEATHER.

PLATE NO. 918AA

HAILE TYPE DSD SERIES PUMP WITH "RG" GEARBOX

99-211	A	RELEASE TO PRODUCTION	DL	8-6-99	RET
ECD	NO	REV	BY	DATE	APVD
		CHANGED FROM			

HAILE PRODUCTS, INC. A Unit of IDEX Corporation Conshohocken, PA 19428 USA

HAILE

DATE 8-6-99

SCALE: 25